

Kala Pointer

THE KALA POINTER IS A MONTHLY PUBLICATION OF THE KALA POINT OWNERS ASSOCIATION • APRIL 2022

In This Issue

President's Message	2
Board Happenings.....	3
Poem "Tiny Cairn"	4
Clubhouse Updates.....	5
Save the Date: Yard Sale.....	5
Hints from the AC	6
Get Growing!.....	7
Pickleball Social	8
Emergency Communications	9
Through the Lens	11
Get to Know Our Neighbors	14
PT Events	16
Social Plus Meeting.....	17
Sharing the Good Life	18
KP Fire Danger.....	19
Victorian Heritage Festival	20
Pickleball Clinics	21
Committee Reports	22
Address Post Guidance	24
Habitat for Humanity Store.....	25
Advertisements.....	26

From the Desk of KPOA President

Dan Kimball, Board President

Over this past weekend, one of our neighbors had a delivered package stolen from his front porch. The details of the theft are not important except to say that we were able to tell the Sheriff's office the make, model and plate number of the vehicle used in the theft. The gate security system provided us with these details.

We also noted that the driver did not properly access the property. He followed a resident onto the property by tailgating through the gate. I have personally stopped a number of vehicles tailgating onto the property and asked why they didn't use the tele-entry system. Their responses were consistent: a resident told them to tailgate through the gate.

The gate is often cited as a reason why someone chooses to live in Kala Point. Please consider this when you invite a friend or contractor to come into Kala Point during the hours when the gate is closed. Your lot number is all they need to quickly access the tele-entry system. Visitors simply punch in your lot number, and the phone you registered with us will ring. Once you answer the phone, just press 9, and the gate will open.

Those of you who have larger groups coming in may ask General Manager Keith Larson for a code that will allow entry without even using the phone.

Another bit of unfortunate news is that the tether ball that was installed at the beach playground last week lasted only a couple of days before it was destroyed.

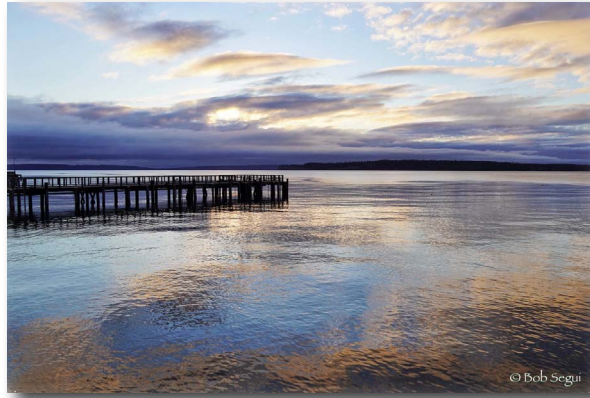
While we didn't get a photo of the culprit, it appears to have been one of our pet dogs, who probably got to playing with the ball before puncturing it with a sharp tooth. Then the punctured ball was pulled off the pole, stretching the cord until it broke.

Now it is possible that this was caused by a wild animal, but we don't think so. We suspect instead that one of our pets was unattended and was just being playful. Dogs do love to chase balls and chew them

when they catch them. I can assure you that beach balls and footballs left outside are an endangered species.

But there is good news and some really good news. First is that the showers at the clubhouse are in the final stages of being upgraded; I was impressed when I saw them today. Second, Spring is finally coming. Yes really, the flowers are starting to pop open and temperatures are rising. Soon we will see the miracle of life in baby birds and new fawns. Observe the birds from afar and drive safely while the young fawns learn to navigate our woods and roads.

Thanks for your time and your help making Kala Point one of the premier private neighborhoods in the Pacific Northwest. ♦



Port Townsend Bay • Bob Segui

April Kala Pointer Staff

Editor: Suzanne Eggleston
Copy Editors: Mike Burk, Hilary Newell, Gail White
Chair: Suzanne Eggleston
Secretary: Hilary Newell

Cover Photo: Alison Ebbott

Donna Abear
Betsy Allen
Joe Braun
Mike Burk
Alison Ebbott
Suzanne Eggleston
Emergency Prep. Committee
Kris Ethington

April Contributors

Grounds Committee
Dan Kimball
Michael Machette
Hilary Newell
Dick Nockleby
Dan Nordlund
Dave Pitts
Terry Rose

Scott Rovanner
Bob Segui
Social Plus
Sue and Steve Stanton
Kim Titus
Tim Twiford
Gail White

Next Newsletter Deadline:
April 19
for the May issue

Submit your articles to:
YourKalaPointer@kalapoint.org

Our Letter to the Editor policy
Look under section H.

2022 Board of Directors

Click on a name to email

President [Dan Kimball](#)

Vice President [Mark Lannon](#)

Secretary [Dan Nordlund](#)

Director & CFO [Donna Colwell](#)

Director [Jean Erreca](#)

Director [Susie Headlee](#)

Director [Sean Moss](#)

Director [Gary Obermeyer](#)

Director [Scott Rovanpera](#)

Click [here](#) to email the entire board



2022 Committee Chairs

Architectural [Michael Machette](#)

BMAC [Scott Love](#)

Elections [Vacant](#)

Emergency Preparedness (EPC)

[Bill Hasan](#), [Mark Miller](#)

Finance [Donna Colwell](#)

First Aid [Terry Rose](#)

Grounds [Scott Rovanpera](#)

Internal Control [David Harrah](#)

Personnel [Dan Kimball](#)

Publications [Suzanne Eggleston](#)

Social Plus [Char Quandt](#),
[Diana Zinn](#), [Patti Biazzo](#)

Tree [Geoff Genter](#)

March Board Meeting Summary

[Dan Nordlund](#), Corporate Secretary

The Kala Point Board met online (by Zoom) on Tuesday, March 8, at 3 p.m. Board members present were D. Kimball, president; M. Landon, vice president; D. Nordlund, secretary; D. Colwell, CFO; G. Obermeyer, S. Rovanpera, S. Moss, J. Erreca, and S. Headlee, directors. Also in attendance were K. Larson, general manager; F. Thompson, administrative assistant II; and 14 self-identified participants.

The March agenda and the February minutes were approved. Emails to the board were reviewed; several were about trail maintenance, which GM Larson addressed in his report. One email requested additional playground equipment for year-round use, which was referred to the Grounds committee for review.

New volunteers were approved for committee membership: Dick Schulte to the Personnel Committee, and Joseph Reeves to the Finance and Strategic Planning Committees. If you think you might like to get involved, check out the various committees on the [KPOA website](#). If you see something that interests you, contact the committee chair to see how you might get involved.

GM Larson reported that we have added two new staff: Melissa Westendorf is the newest administrative assistant, and Erin Soehl is the newest clubhouse attendant. If you see them around, please give them a warm welcome.

Collection of KPOA assessments is on track. All lots, homes and condos have paid at least the first half of their assessment. Collections for the timeshares is more than 98 percent. Reserve projects are moving forward and the Clubhouse shower project will be completed in time for the pool opening this spring.

Trail maintenance is moving along. Work has begun on the Park Trail at Fairbreeze and Kala Point Drives, and on the Windship Drive/Beach Trail.

Under old business, the Website Oversight proposal from the Publications Committee was referred to Personnel to review staffing impact.

The work of updating the Kala Point APPs is ongoing. The updated [APP Article IX](#) (Elections committee) was approved by the Board. The first reading of [APP Article VII](#) (Finance committee) is scheduled for the April 12 Board meeting, as is [APP Article III](#) (Architecture committee). You can find the APPs

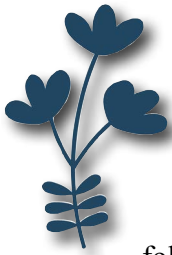
[Continued on Page 4](#)

The Kala Point community is a common-interest residential homeowner association (HOA). When purchasing or building within Kala Point, homeowners agree to follow the HOA's governing documents, which include: Conditions, Covenants and Restrictions of Record (CC&Rs); Rules and Regulations; Bylaws; and detailed Administrative Policies and Procedures (APPs). APPs are Board-enacted rules. The protective umbrella of these governing documents works in the best interest of all homeowners ensuring higher standards of neighborhood appearance and enhancing the collective value of the homes.

Continued from page 3

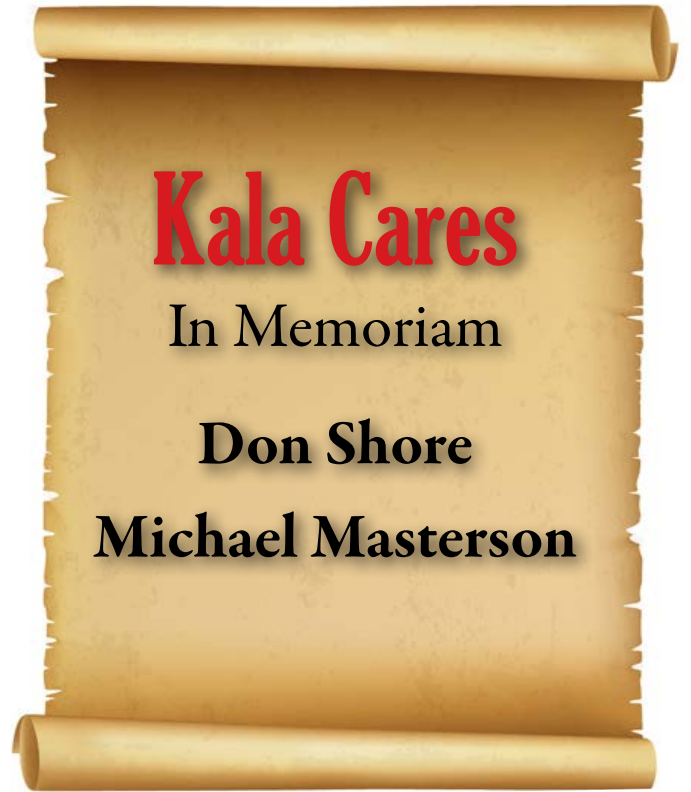
on the appropriate committee landing page on the Kala Point website.

The Board also approved two other motions. The first was to trademark the new Kala Point logo through the Washington Secretary of State registry. The second was to fund a KPOA wage study to be conducted by Western Washington University at a cost of \$5,500.



Finally, the Board approved the following goals for 2022: 1) plan and execute demographic survey of KPOA; 2) implement oversight of website; 3) attain 50 percent new website registrations within 60 days of launch; 4) increase number of volunteers for Board and committees.

Note: For more details about the meeting, supporting documents, and a recording of 2022 board meetings, visit the Board of Directors landing page on the new website kalapoint.org/board-committees/board. ♦



Kala Cares

In Memoriam

Don Shore

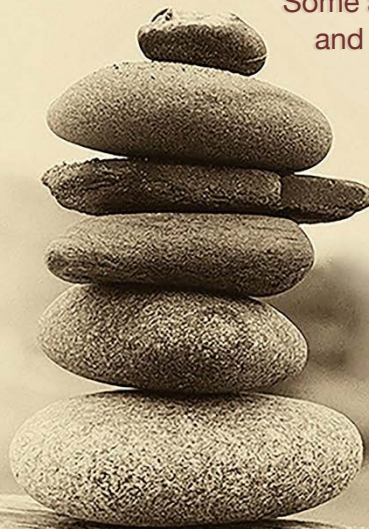
Michael Masterson

Tiny Cairn

by Sue Stanton; photo by Steve Stanton

When your mind is shouting and you can't quiet the noise,
balance small stones to help regain your poise.
Position each one. Consider proportion.
Be mindful of size. Recognize each pebble's distortion.

Each stone is relevant, from bottom to top.
Some are memories, some are goals,
and some are answers, long forgot.



If your bedrock is solid,
the rest will stand firm.
If toppled, take heart,
It won't be long-term.

Gently pick up your pebbles
and reset the foundation.
Be true to yourself.
Rebuild your creation.

Clubhouse Updates

- Shower project work is complete.
- The sauna and jacuzzi are open as of April 1; the pool opens on April 15.
- Clubhouse hours effective April 1: 9 a.m.–9 p.m., seven days a week.
- Lap swim is open Monday through Sunday, 9 a.m.–12 p.m.; no reservations necessary. ♦

East Jefferson Fire and Rescue 2022 Fundraiser Event

Terry Rose, EPC

On behalf of the Kala Point Emergency Preparedness Committee, thank you for your generosity in raising a record amount for this year's event. The total raised was \$6,030!

Checks will be submitted to Chief Black soon, and I am sure EJFR will be thrilled and grateful for our support. Good job, Kala Point! ♦

Save the Date!

Social Plus Committee

Social Plus is happy to host our Community Wide Yard Sale on Saturday, June 4, 2022, 8 a.m.–3 p.m.

Watch for more information in the May and June issues. Sign up for the sale in May. ♦



© Bob Segui

Sunset Over Port Townsend Bay • Bob Segui

Hints from the Architectural Committee

Michael Machette

Building costs and schedules. Costs are way up nationwide for lumber, as are other materials and labor, and probably won't decline until the world settles down. If you are planning a remodel project, buy your appliances, fixtures or special items (tile, flooring) ASAP. Builders, especially the good ones, are in demand, booking projects a year or more in advance. Cost estimates early in the process are just fairy tales. It's all about advanced planning now.

Paint color samples.

We request paint on wood to judge colors; those small chips from Home Depot or your hardware store are not very representative. Often, they look darker when you see an entire wall. Recently, Anne Morisseau on Windship Dr. submitted page-size samples. These are from [samplize.com](https://www.samplize.com), an online color-consulting company. They make peel and stick paint samples with real paint for \$5.95. These are available at several other online sites.

Know your lot lines. We are still seeing confusion on this item. The lot lines are based on surveyed markers. There is a master marker (benchmark) in the street nearby, and there usually is a

surveyed marker comprised of a metal rod and cap at each corner or bend in your lot line. Try to find them and you'll know whether you or your neighbor owns that particular plant.

Setbacks. Kala Point doesn't let you build up to your lot line — obviously, everyone needs space.

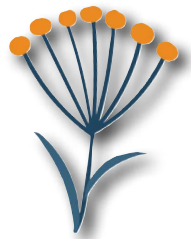
Jefferson County uses five-foot setbacks on the margins; we use 10- and 25-foot margins adjacent to any bounding road. Nothing permanent can be built in the setbacks, which also accommodate utilities. They are perfect places for bushes and trees that can create fence-like barriers, yet maintain an open environment.

AC meetings. Meetings are held the third Thursday of each month at 9:30 a.m. via Zoom and in person at

the clubhouse; however, the next one will be **April 25 at 1 p.m.** due to scheduling difficulties. If you submit a request for the AC, make sure it's at least five business days before the meeting (April 18 in this case). This will give the office time to log it in, check that we have all we need, get it on our agenda, and arrange any site visits that might be required. If you miss the deadline, there always is next month. ♦



Josh Olalde, unsplash.com



Please Steer Clear of Building Sites

There are several homes currently under construction in Kala Point. One of the builders has made it clear to their client that only authorized personnel should enter properties for liability reasons.

Also, please do not distract contractors on the site. This is not only for the safety of the workers, but also for those in the community: two of the subcontractor companies have had COVID run through their business twice already.

Please be mindful of these safety concerns. ♦


Send us stories and photos from your life!

Articles should run about 500 words, and be submitted to:

yourkalapointer@kalapoint.org



Get Growing!

Hilary Newell

There's one thing that has to happen in every garden whether it's ornamental or edible, new or established, and that is weeding. Ugh, you say? Can't I just spray something? What about landscape fabric or plastic sheeting? Won't those work? The short answer is "Yes,



those will work short term, but you are creating more problems down the road."

Anecdotally, the use of landscape fabric has indeed caused a lot of headaches in Kala Point. We lost a 20-year-old Cryptomeria in the snow/freeze/blech we had right after Christmas and had it removed. This created an opportunity to plant some favorites; when we began to dig, there were two layers of landscape fabric with rocks and lots of gunk in between. Over time, the decayed mulch and other organic matter that built up on top of the black landscape fabric created a perfect home for weeds to grow anyway. It took nearly three hours to dig a hole big enough to plant the Dogwood "Venus" we chose. Okay, rant over. Just know that landscape fabric will eventually cause grief for someone.

Back to weeding... this is the best way to see which plants have survived the winter, and to keep an eye on plants that may spread more than you want them to. It's far easier to yank things out now, when the soil is

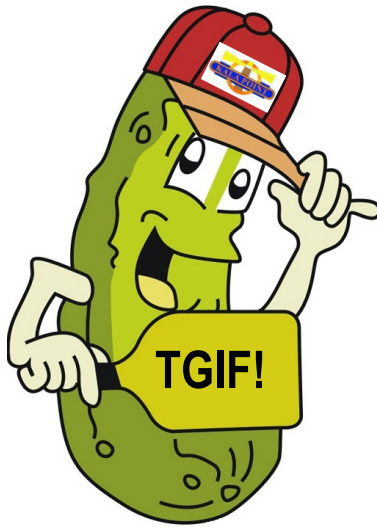
moist than to wait until the summer sun has dried it up. Crawling around the garden on my knees with the sun shining on my back is great therapy after our dark winter months. It also gives me time to formulate ideas about what to plant, and how to rearrange things. I cut up an old yoga mat that makes a perfect waterproof kneeler for the damp garden.

If you haven't cut back your ferns yet, now is the time. I discovered that almost all of ours had broken fronds from the heavy snow we had this winter, so they all got a haircut this year. April is a good time to gradually adjust your soil pH. A soil test can tell you whether it's necessary. You can find information online about soil testing, and the [Master Gardeners](#) can help you out, too.

If you like containers full of colorful plants, start exploring the local nurseries. Early bloomers like pansies, ranunculus and primrose are rapidly being replaced with long-blooming annuals. Make a list of the flowers you want to put in your containers and buy them when they become available. It was hard to get near Valley Nursery during their big sale, but we managed to score some herbs to refresh our kitchen garden whiskey barrel. We started listening to the [Valley Nursery Plantcast](#), and each episode has some good information. We are also lucky to have a plethora of great nurseries and plant vendors in our Port Townsend area.

Indoors, you've probably noticed that your houseplants are starting to put on more growth. So if you haven't been feeding them, it's time to start. Our houseplants are fed at one-quarter to one-half strength through the winter, and we've bumped it to nearly full strength now, feeding once or twice a month depending on the plant. If they're requiring water way more frequently, it's probably time to repot them. ♦





Join Us for a Pickleball Social!



This social is for all pickleball players and for anyone who may be interested in learning more about pickleball in Kala Point.

Friday, May 13,
5-? p.m.

Kala Point Clubhouse

Bring your drink, glasses and an appetizer to share, plus questions, suggestions and fun ideas. Plates and utensils provided!

Contact Char Quandt with questions at 360.531.4226 or Charlene.quandt@gmail.com



Emergency Communications

Emergency Preparedness Committee

Do you know how to sign up to receive notifications in the event of an emergency, such as an approaching tsunami, a severe freeze alert, or other critical information, direct to your phone? (And yes, you do have to sign up to receive the messages!) Have you considered how you'll communicate with the outside world in a disaster if the power is out and cell service dies? Read on...

When a disaster strikes, being able to communicate — both to receive and to provide information — is critical. Yet, it is also one of the first resources to go out of service. Having a functioning backup communication system in place not only will be reassuring but may also be lifesaving. In Kala Point, we have several communication systems available to us in a disaster through your Kala Point Emergency Preparedness Committee (EPC.)

All of us have come to rely heavily on our normal lines of communication. We receive information from broadcast radio and television, cable TV, satellite radio, internet via cable and on our phones, newsfeeds, social media, email, phone calls and text messages. We can provide information, let others know our status, and when we need help, we make a call or send a text to 9-1-1.

But in a disaster such as a severe storm, earthquake, fire, etc., some of the first things to suffer are communication lines, either through physical damage, or due to extremely high demand overloading the system.

To receive information about an impending situation, you might hear about it on the radio (KPTZ 91.9 FM is our local emergency broadcast station), on TV news or via social media. Or you might hear

the tsunami sirens or receive an alert on your NOAA weather radio.

To receive Jefferson County-specific information, sign up for NIXLE. This is a free text message alert system used by the 9-1-1 center and Department of Emergency Management to notify residents about critical local situations, ranging from serious road



Macrovector, freepik.com

closures, to evacuation or shelter in place orders, active shooter situations, etc. To subscribe go to co.jefferson.wa.us/1066/Alerts-Warnings.

For Kala Point-specific information from the KPOA Administration, KPOA Board or EPC, we have KPAAlert. You can elect to receive a text message with critical information that directly affects Kala Point, such as which of our three emergency exit routes are open in an evacuation and where KP residents are being directed to gather. To sign up for KPAAlert, go to mobile-text-alerts.com/KalaPointTextAlerts.

In any emergency, your first thought should be to call 9-1-1. But during a disaster, our 9-1-1 center will likely be completely overwhelmed with calls (there are generally only two operators on duty — not much when there could be 30,000 people calling for aid.)

Continued on Page 10

Continued from page 9

This is where the Kala Point Emergency Preparedness Committee can help:

1. First, obtain a Kala Point walkie-talkie. Approximately 200 KP residents have obtained these from their block captains (for less than \$15 each). With different frequencies assigned based on each Kala Point Zone, they can be used to communicate with your block captain and your neighbors when all other communication systems are out.
2. Block captains have high-powered emergency radios that allows them to communicate with the KP Neighborhood Emergency Operations Center. During a disaster, the Center is in touch with the County Department of Emergency Management via Kala Point's EPC network of ham radio operators.
3. If you need help and the County cannot respond, the Neighborhood Operations Center can dispatch the Kala Point First Aid Team of advanced first aid trained responders, or a CERT-trained Search and Rescue team, or the Emergency Pet Management team for wounded or lost pets.

If you'd like to know more about the Kala Point Emergency Preparedness Committee, go to kalapoint.org/board-committees/epc/.

You can also contact your block captain or EPC Co-chairs Mark Miller (mark@jamminc.com) or Bill Hasan (williamrhasan@gmail.com). ♦



Did you hear about the guy who swapped the labels on the pumps at the gas station?
It was an April Fools' joke.



Believe nothing, and trust no one this April Fools' Day. **In other words, it's just like any other day!**



Joke's on you, April Fools' Day... **I can be fooled any day of the year. ♦**

A benefit for Center Valley Animal Rescue

centervalleyanimalrescue.org/

For the Love of Animals Gala & Silent Auction



WHEN: April 2, 2022 5:00 pm

WHERE: Northwest Maritime Center
 431 Water St, Port Townsend

Through the Lens



Beautiful Port Townsend • Kris Ethington



Fabulous Fungi • David Pitts



R. montroseanum • Dick Nockleby



Bumble Feeding on Willow Blossoms • Kris Ethington

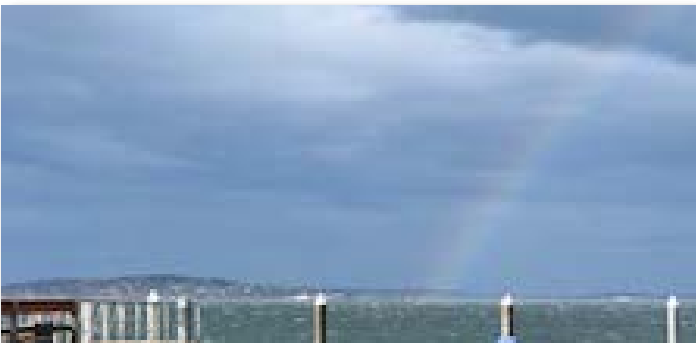
Through the Lens



Cannon Beach Sunset • Betsy Allen



Rainbow Over Depoe Bay • Dick Nockleby



Stormy Sea with Rainbow • Joe Braun



Launch of Lady Washington • Alison Ebbott

Through the Lens



Daisy • Tim Twiford



Jasper • Kris Ethington



Sonnet • Donna Abear



Rigo • Kris Ethington



Lagoon Reflections • Betsy Allen

Get to Know Our Neighbors *Suzanne Eggleston*

Joe and Carolyn Braun

Terrace Drive

“The very basic core of a man’s living spirit is his passion for adventure.” These words appear in Jon Krakauer’s *Into the Wild*, but they easily could have been pulled from a book about Joe and Carolyn.

When they were younger, they loved to travel but couldn’t afford the kind of trips that interested them. At the prompting of friends, they joined the Sierra Club Outings Committee and were trained to plan and lead trips to Hawaii and beyond. The couple spent more than 20 years leading hiking, camping and kayaking trips all over Europe, Costa Rica, Mexico and Hawaii. Carolyn also spent winters as a kayak guide for Baja Expeditions out of La Paz, Mexico.

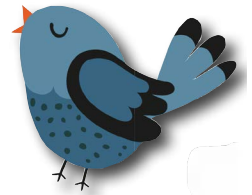
“We always worked, but somehow we did [these trips] — and we had three kids,” says Carolyn. “I don’t know how we did it, but we had a lot of fun.”

“I’ve had a lot of experiences and a million stories,” adds Joe. He’s started writing down some of his stories along with hundreds of quotes from different things he’s read. At some point, he hopes to put a book together.

One of their adventures and inarguably their greatest achievement is “raising three good sons,” says Carolyn, all of whom live in California. The oldest was an Olympic and professional volleyball player who



now works as a wine broker, and has a son and daughter who are both volleyball players. The second son, who Joe describes as “the smartest person I’ve ever been around,” works with organizations to provide housing and care for the homeless in Sonoma County. The third is a chef — and proud father of a daughter studying film production — living in Huntington Beach.



Married now for more than 50 years, Joe and Carolyn have spent most of their lives in California in such places as Sunset Beach, San Mateo, San Anselmo, Clovis, Carmichael and Watsonville.

Carolyn grew up and attended universities in California, and earned a degree in marine biology. After a short time teaching college classes, she ultimately became a clinical chemist for a company that produced automated chemistry analyzers. When a machine was sold, Carolyn would train the purchasing company’s employees how to use it.

“I would typically travel from Guam to Alaska in one month,” says Carolyn, where she would work in hospitals, doctor’s offices, prisons, aircraft carriers — basically anywhere laboratory work was performed. “This was a great job until it wasn’t,” she says, when 9/11 made travel much more difficult. She retired in 2006 and says she’s loved every minute of retirement.

Joe went to USC to play basketball. While working toward a degree in social sciences, he took a telecommunications class where he studied alongside Natalie Wood, Jack Linkletter (Art’s son), Marlo Thomas (Danny’s daughter), and even Diane Disney (Walt’s daughter).

After college, Joe headed overseas to play professional basketball. He returned home after two years, worked in management for a large bank, then became a stockbroker. But the vast majority of his career was spent developing small shopping centers.

His resume also includes stints as a coach and an athletic director, marketing for West Marine, and teaching cooking classes for Home Chef.

“But I’ll always be a sous chef in her kitchen,” says Joe of Carolyn, “because she’s such a natural cook.”

In 2007, they moved to Port Townsend, drawn here by the small-town atmosphere, access to great art and

Continued on Page 15

Braun ~ Continued from Page 14

music, and the abundance of nature, local organic farms, hiking, kayaking, and friendly people. They lived in a house on Lyter just outside Kala Point’s gates.

“I would walk here and always loved two houses in Kala Point, both single-story, simple homes on Terrace Drive,” says Carolyn. “They were never for sale.” After seven years, they moved back to California, then on to Green Valley, Arizona, a place they found to be too hot and dry for year-round living.

Eight years later, they returned to visit Port Townsend to escape Arizona’s August heat.

“It’s a perfect example of serendipity that we live here again,” says Carolyn. “We had no intention of buying a house, but Joe was driving around the area and saw a little ‘For Sale by Owner,’ sign on the driveway of one of these two favorite houses.”

“We drove up the driveway and told them we’ll be back tomorrow,” says Joe. “And off we went.” They moved into their house in November 2020, and describe living here as “divine.”

They share their cottage (as one friend describes it) with cats Tommy and Jax. “They keep us entertained and take up too much space on the bed at night!” says Carolyn.

The couple likes to entertain and be entertained by friends, spend time in the garden, cook, read, exercise (Joe likes to walk the beach and trails of Old Fort

.....
“We always worked, but somehow we did [these trips] — and we had three kids. I don’t know how we did it, but we had a lot of fun.”
.....

Townsend, while Carolyn likes to buzz around on her new electric bike), and travel, although not to the extent they did in the past. “Like many other people, we have canceled more trips than we’ve gone on in the past two years,” says Carolyn. Since retiring from leading trips, they’ve enjoyed river and ocean cruises in Europe.

“My favorite place in the whole world is the Dolomites in northern Italy,” says Joe. Carolyn smiles, then says, “I’m going to Hawaii every year until I run out of money or die. I love to swim and snorkel in that lovely warm water with all those beautiful fishes.”

But they agree that living here is pretty sweet. “We have wonderful friends both in Kala Point and the general area which makes life a whole lot of fun,” enthuses Carolyn. “Our neighbors on Terrace Drive are the best! We’re so lucky to live here.” ♦

SAVE THE DATE



We are proudly marking 150 years of service to our communities and invite you to join us for the celebration

**SATURDAY, OCTOBER 8, 2022
PORT TOWNSEND CITY HALL
(Where it all began)**



Antique & New Fire Engines - Competitions - Demonstrations - More to come!

What's Happening in PT

Gail White

April 1, April Fools' Day

April 1, Dance Like a Fool Party at The Castle.

Shake off the winter blues, featuring Jesaint. 9-11:59 p.m. \$5 cover. 651 Cleveland St., thecastleinpt.com.

April 2, 30th Season, Port Townsend Farmers

Market. Runs through mid-December. All local, sustainable and organic. 9 a.m.–2 p.m. Lawrence Street and Tyler Streets. jcfmarkets.org/

April 2, Yellow Birds – Americana at Finnriver

Cider Garden. Amanda Breese, Jenna Ellefson and Rose Gerber bring soaring harmonies to their brand of sweet and haunting original songs. 6–8 p.m. \$5 cover. Finnriver Cidery, 124 Center Road, Chimacum, 360.339.8478 or info@finnriver.com.

April 3, Kristin Myers. Whimsical, funny, and local singer songwriter Kristin serenades with her beautiful tunes. The Castle in the Rook. 6–8 p.m. 651 Cleveland St., thecastleinpt.com.

April 3, String and Shadow Giant Puppet Theatre,

Paper Moon. Live theater: multi-disciplinary performance artists portray the strange turn Earth takes when the moon falls out of the sky. 6–7 p.m. \$15 donation (does not include food/drink). Finnriver Cidery, 124 Center Road, Chimacum, 360.339.8478 or info@finnriver.com

April 11, Monthly Artists' Reception. Meet local artists and celebrate their work. 4–6 p.m. Port

Ludlow Art League
Gallery, 9500 Oak Bay
Rd., [portludlowart.org/
events/](http://portludlowart.org/events/)



April 16, Comedy at The

Castle. Enjoy hilarious comedians from all over. Tickets are \$15 and sell out quick. 8–10 p.m., 651 Cleveland St., thecastleinpt.com.

Apr 17, Early Bedtime Boys. Authentic acoustic old-timey ensemble. No cover. 7-9 p.m. The Uptown Pub, 1016 Lawrence St., ptuptownpub.com/

April 22, Earth Day

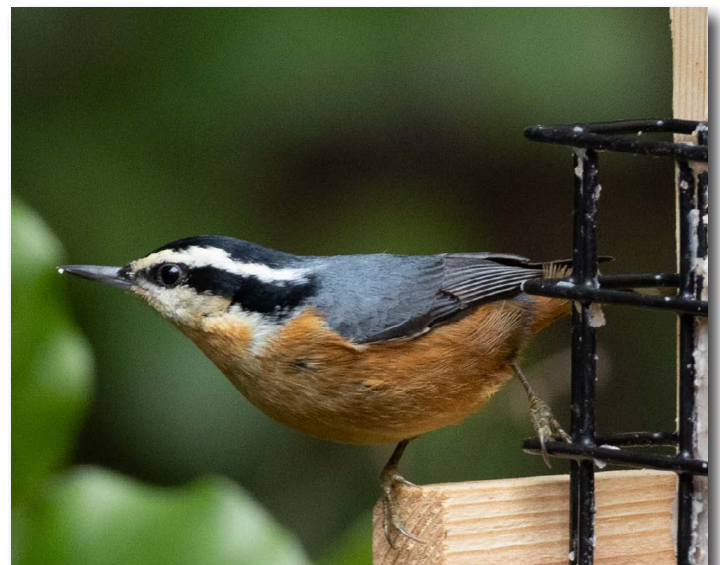
April 24, Movie Night at the Castle – Little Shop of Horrors. Dinner and a movie. Free/donation, but please RSVP. Food and drinks can be ordered. 6 p.m. 651 Cleveland St., thecastleinpt.com.

April 29, 30 and May 1. Port Townsend Victorian Heritage Festival. Celebrate the history, lifestyle and audacity of early life in PT. See website for hours and ticket prices, Cotton Building, 607 Water St., porttownsendvictorianfestival.org/ (See page 20 for more information.)

April 30, Comedy and Music: Michael Bridge and Kornel Wolak. Internationally acclaimed music and comedy duo. 7–9 p.m., \$30 tickets, Bay Club in Port Ludlow, 120 Spinnaker Place. Contact David@kptz.org or 360.344.8327.

Check out other happenings in our area at:

mycityscene.com/porttownsend/site/calendar ♦



(Left) Chestnut-backed Chickadee and (right) Red-breasted Nuthatch • Kris Ethington

Kala Point Social Plus Committee Needs You!

Neighbors Creating Community

These past two years have been tough on all of us who enjoy being social and enjoying the social scene at Kala Point! It's time to make some fun events happen in the neighborhood, and the Kala Point Social Plus Committee is gearing up to do just that!

***Tri-Chairs Char Quandt, Diana Zinn & Patti Biazzo
invite Kala Point residents to join in
creating a fun community environment.***

Our mission is simple:

Promote fun social activities such as:
TGIF Happy Hours, Marimba Band Tropical Beach Party, Halloween, Christmas Parties, Thanksgiving Potluck, NY Eve Dance with live music, Art shows, Annual Neighborhood Garage Sales, and our Street Dance the first Saturday in June & more!

We also do important charitable works for the annual Food Bank Drive, Christmas for Children, Toys for Tots along with talks & classes of interests to KP residents. We encourage participation of all residents of Kala Point Owner's Association.

Please mark your calendar to attend the KP Social Plus Meeting:

Tuesday, April 5, 2022, at 1 p.m. at the Clubhouse

Current vaccine card & masks will be required until COVID guidelines say otherwise.

We are recruiting new members, men and women, who like to have fun to join our committee — don't be shy!

Please bring your creative ideas.

We will brainstorm and make plans for events & activities for 2022. Your input is needed, it takes a village to create a variety of fun events!

We certainly have appreciated all the support and attendance to the events Social Plus has hosted in the past.

It is neighbors like you that make it all worthwhile!

Please note this meeting is subject to current COVID guidelines and could be canceled if necessary.

Sharing the Good Life *Hilary Newell*

With the onset of Spring, we tend to shift toward simpler meals. This salad is satisfying and delicious and has no greens in it, though it would be lovely served on some nice tender butter lettuce. You can switch up the protein however you want. The recipe, as written in *Six Seasons* cookbook, calls for salami, but I could see it with any other protein. With toothsome farro as the base, it has at least 5g protein without any additions. If you cook the farro early in the day, it's a breeze to put together when it's time to eat.



Artichoke and Farro Salad with Salami and Herbs

Serves 4

Ingredients

- 2 cups cooked farro
- Extra-virgin olive oil
- 3 oz thinly sliced salami, cut in half- or quarter-moons
- ½ large red onion, very thinly sliced
- ¼ cup white wine vinegar (I used white balsamic)
- Kosher salt
- Freshly ground black pepper
- Dried chili flakes
- 4 poached artichoke quarters (I used one-half a jar of marinated artichoke hearts)
- Up to ½ cup each: basil, mint, parsley
- ¼ cup dried breadcrumbs



Method

Pile the farro, salami, and onion into a bowl and toss with ¼ cup vinegar.

Taste and add salt, pepper and chili flakes
Add the artichokes, parsley, basil and mint.

Toss and taste again.

Adjust salt, chili flakes, and vinegar to taste.

Add ¼ cup olive oil, toss again, and sprinkle the breadcrumbs on top. ♦

Send your food
and cocktail recipes to:

YourKalaPointer@KalaPoint.org



How Likely are Fires in Kala Point?

*Kim Titus, Liaison Officer, NW Interagency
Wildland Fire Team and KPOA resident*

As we approach the summer season, homeowners are cleaning their yards and getting ready for the summer heat. I am often asked, “How can we protect our homes from the kind of devastating wildfires we see happening every year on the east side of the Cascades?”

To answer this question, first you must understand that our natural forested environment is significantly different than areas east of I-5. First, there are no “Fire Wise” guidelines for homes specific to our coastal environment, because of our high level of precipitation and humidity. While fires can happen in this area, the likelihood is low and the risk of the fire growing large is very low. This is because to have a big fire, there must be three things in place: dry fuels, an ignition source, and wind (oxygen).

The National Interagency Fire Center (NIFC) does a plan each year that assesses risk for every area in Washington. Our most recent plan is called “Western Washington Interagency Fire Danger Operating Plan — 2021” and our area is identified as “Central Lowlands.” There are several areas that NIFC (State and Federal Agencies) assess while planning for the fire season.

1. **Drought conditions:** As of March 2022, all lands west of I-5 are not affected by drought conditions.
2. **Possible causes:** Our highest chance of ignition, as identified by the plan, is human caused. Smoking fires, vehicle-caused fires, powerline fires, and other undetermined human-caused ignitions are the highest risk.
3. **Available fuels:** Fuels in Western Washington currently have high moisture content and are not at risk, meaning we do not have large amounts of dry, dead or dying fuel. Although we see many dead and fallen trees in Fort Townsend State Park, there is also a healthy ground cover of different ferns and shrubs that keep the moisture level high in the soil and the fuels themselves are sufficiently moist to slow or prevent ignition.

But you must note the following important information to help inform your perspective: All open fires are prohibited in Kala Point. All electric and water utilities are underground. Jefferson County routinely initiates an open-fire ban along about mid-summer. These three management elements already do an

excellent job of preventing wildfire events, as do Kala Point’s wider and well-maintained streets. It is worth noting that the two fully involved structure fires here in Kala Point in 2017 resulted in a zero-wildland fire threat.

Given the above, the smartest thing residents can do is to reduce or remove the chance of a spark or ember on the ground from going up into the trees and onto our roofs. A guide to think about: any vegetation that catches fire will likely have a flame length as high again



Landon Parenteau on [Unsplash](#)

as the original vegetation. If vegetation height = x , then flame height will be $2x$. For example: flame length for a lawn is a couple of inches, for a three-foot shrub it’s an additional three feet. Therefore, any vegetation that is under your trees needs to be kept trimmed low enough so flames won’t reach the lowest branches of your trees. This also applies to shrubs next to your home. If your shrubs are tall enough that $2x$ the height of the shrub reaches your soffit, those shrubs should be trimmed or moved away from the house. The Tree Committee also recommends that all tree branches be 15 feet away from your roof.

It is not recommended to remove undergrowth from beneath your trees, just keep it trimmed. Healthy forests

Continued on Page 20

Port Townsend Victorian Heritage Festival

Scott Rovanpera

Kala Point residents Tracy Wirta and Scott Rovanpera are co-chairing the Port Townsend Victorian Heritage Festival, to be held on April 29, 30, and May 1, 2022. Tracy knew that Victoriana would be in our future once we moved to Port Townsend, so we volunteered to take on the VicFest.



The Victorian Heritage Festival was founded in 1996 to celebrate the social status and lifestyle rise during the Victorian period. After spending six months planning the 2020 Victorian Festival, it became the first festival

victim of the COVID-19 pandemic and was canceled 10 days before its opening. But this allowed Tracy and I to find “our people” who love this festival. In 2021, five of us formed the Port Townsend Heritage Association, a 501(c)(3) nonprofit with a mission to celebrate the storied heritage of Port Townsend — and host the Victorian Heritage Festival.

This year’s festival has many activities to choose from. On Friday night, the Victorian Parlor opens in the Cotton Building on Water Street, with a special presentation about James S. Swan and a Magic Lantern slide show. The Girl Scouts of Jefferson and Kitsap County will be serving tea and demonstrating parlor games.

Saturday kicks off at the American Legion Hall with three presentations on restoring Victorian homes, the replacement of the main mast for the Schooner *Martha*, and reliving “Old Patsey’s Potlach from July 4, 1891.” Following the presentations, the very popular fashion show will return with more 20 models, half of them children wearing authentic Victorian clothing.

The festivities continue with a family-friendly Victorian contra dance. A contra caller will help

everyone learn some simple Victorian dances. On Sunday, three more presentations will be held in the Cotton Building: “Miracle Tonics, Grand Elixirs, & the Promise of Good Health in the Victorian Age,” Victorian jewelry, and the restoration of Worthington Park in Quilcene.

There are also many partner events occurring during the festival, including two separate Uptown walking tours: one starting from the Jefferson County Courthouse, and the other from Chetzemoka Park. Downtown walking tours will be conducted by Key City Public Theatre actors, the Rothchild House will be opened by the Jefferson County Historical Society, and there will be a soiree at the Starrett House and a dinner program at the Manresa Castle. If you want to go “Victorian,” you can rent costumes that weekend from Lakewood Costumes in the Pope Marine Building.

Check out the festival at PortTownsendVictorianFestival.org. ♦

Fire Danger in KP ~ Continued from Page 19

in the NW have undergrowth in a symbiotic relationship with the trees. Ground cover in a forested environment is important as it holds moisture in the ground around trees and reduces the moisture loss during hot dry periods. In fact, removing undergrowth accelerates the soil-drying conditions you are trying to prevent. “Moon scaping” also creates a food desert for wildlife, from insects and birds to mammals.

In conclusion, remember: **Fuels. Ignition. Wind.** The trinity of wildfire ignition must all be present in just the right mix to sustain a wildland fire. Could a large, uncontrolled fire event someday threaten or consume Kala Point? Historically, the answer is no. The data collected for 2022 indicates our risk remains low. We will, of course, continue to see wildfire events on the Olympic Peninsula. But barring unusual localized circumstances, these fire events historically remain low and are generally managed with local fire suppression resources; i.e., fire departments and DNR resources. Be your own citizen-scientist. In doing so, you will discover that the risk of large wildfire events here on the OP is significantly less than some would have you believe.

The best unbiased sources of wildfire risk include the Natural Resources Conservation Service, nrcs.usda.gov, and the Washington Department of Natural Resources (DNR), dnr.wa.gov.

Next month: Landscaping to reduce wildfire risks. ♦



Pickleball Clinics

Saturday, June 18
Taught by Doug Hastings, 5.0 IPTPA
Certified Instructor
Kala Point Lagoon Courts

Want to give your pickleball game a jump start? Consider taking one of the two-hour clinics that will include lots of active hitting, great player to coach ratio, and jam-packed drills with tested and tried pickleball content.

All classes are \$30 a person with a maximum number of 8 students per class. Each class is two hours long and will be taught on the two Kala Point Lower Lagoon Pickleball Courts. To register, email Char Quandt: Charlene.quandt@gmail.com

Classes are limited to 8 players but there will be a waiting list if classes fill up.

10 a.m.–12 p.m.

Class 101: This class is open to all abilities, and is designed for 2.5–3.0 players wanting to move up.

Overview of the basics & fine tuning your strokes. Round out your game with a variety of shots.

- Grip “continental”
- Athletic stance “stay low”
- Objectives of the game
 - Tennis vs. pickleball
 - Play smart, respect the net, minimize errors
- Basic strokes
 - Dinking, lobbing, 3rd shot drop
 - Volley, blocking, smashes
 - Overhead, serve and return
- Doubles play
- Court positioning
- Scoring
- Basic rules

1–3 p.m.

Class 201: This class is designed for High 3.0–4.0+ players

Fine tuning your strokes & strategies. This class is designed to improve your stroke mechanics and help you become a more consistent player. Learn strategies & techniques to be more competitive with a stronger player.

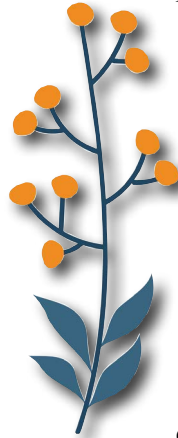
- Soft game
 - Dinking, offensive lob, blocking, volleying
- Transition game
 - 3rd shot drop, drives, lobs
- Specialty shots and shot selection
 - Overheads, drop shots
- Serve and return
- Exploiting opponents
 - Isolating a player
 - Finding weaknesses
 - » Grip
 - » Backhand
 - » Court movement

Committee Reports

Architectural

Meeting March 17

- In March, there are 27 active projects; five new applications were received.
- Continuing from last month, a homeowner wants to replace a roof with non-approved material. Several more options are being reviewed by both the Architectural Committee (AC) and the homeowner.
- Caleb Anderson (Anderson Homes) presented plans for developing lot #347 on the corner of Oak Shore Drive and Fairbreeze Drive. Several subjects were discussed, but much of the discussion revolved around preserving as many native trees as possible. After the meeting, Caleb and members of the AC met and conducted a site review of the plans.
- The AC presented its updates to its Policies and Procedures to the Board of Directors for initial review and comment.
- The next AC meeting will be Monday, April 25, at 1 p.m. (date changed from normal third Thursday).



Other

- Dan Kimball and Mark Lannon shared that the Personnel committee had received a proposal from Western Washington University (WWU) to perform a wage study survey. Funding had been approved by the Board in 2021, but the committee was unable to find a suitable vendor. After much discussion, the committee agreed. (see motions)
 - Reserve projects are underway, the clubhouse showers are on schedule to be complete mid-March.
 - Finance Committee **APPVII** revisions have been completed. The APP now conforms to how financial processes are performed. Going forward, the committee will look to refine those processes and add any other minor revisions. A copy with the listing of changes will be posted to Board meeting files for a first reading (see motions).

Motions:

Finance Committee voted unanimously to recommend to the Board of Directors that they proceed with the proposal from WWU for a Wage Study Survey in 2022.

Finance Committee voted unanimously to send **APPVII** revisions to the Board for a first read at the March BOD meeting.

The Finance Committee voted unanimously to request the Board to accept Joseph Reeves as a new member to the Committee.

Next meeting: scheduled for 9 a.m. on April 5, 2022

Finance

Meeting March 8, 2022

Subcommittee Reports:

ICC is fully up to date with Income and Expense reviews, and is waiting finalization of bank signatory cards for review. Account Reconciliation review process is working well. No issues to report.

Financial Review: January and February

- Staff efforts this month reduced 56 delinquent payments in LHC to just two. Both owners have indicated payment will be received soon.
- We still have nine timeshares delinquent that may prove to be more problematic. This is down from 30 last month.
- Discussion of accounts at Chase Bank noted our current total exceeds the FDIC-insured funds limits. This is partially due to our expired CDs, and that our Reserve funding is increasing. Post meeting, it was decided to move some of the reserves back to CDs so as not to exceed levels.

Grounds

Meeting February 24, 2022

The General Manager report included four updates:

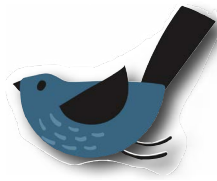
1. the Clubhouse shower project is on schedule and expected to be completed by the time you read this article
2. a red 911 phone has been installed in the Clubhouse
3. a Wild Olympics sign was removed (in violation of policies related to political signs)
4. the Foxfield mailbox kiosk solar power system is not working and may need replacement

Board Rep Gary Obermeyer provided an update on the Grounds Committee's KPOA website landing

Committee Reports

page to get feedback on the organization of *Kala Pointer* articles. He also pointed out a Frequently Asked Questions feature on the Architectural Committee’s landing page. The Grounds Committee agreed to think about which topics to include in a FAQ on the Grounds Committee’s landing page.

Leslie Weertman, leader of the Kala Natives Group, reported that Teresa Anderson will lead the group while Leslie is in Arizona. On a related matter, Leslie urged the Committee to call for a halt to additional boardwalk on the Lagoon trail; after a lengthy discussion, the Committee opted to take no action. Meanwhile, the weekly work is continuing near the Lagoon. Volunteers have begun pulling young bur chervil plants before they can develop the toxic red stalks that produce Velcro-like burrs when the seeds are mature.



The Committee completed a review of reflective emergency house number signs (carried over from the last meeting.) Both County and KPOA policies require that signs be well-placed and reflective so as to be clearly visible both day and night for approaching emergency vehicles. One sign was found to be out of compliance at this time, and a letter has been sent. Committee Member Tom McFarling volunteered to assist with sign replacement. The full committee agreed to keep an eye on emergency signs as part of their quarterly monitoring.

Speaking of quarterly monitoring, the addition of Tom McFarling to the Committee made possible a re-alignment of zone assignments to achieve a more equitable distribution of monitoring responsibilities. Note: The Grounds Committee remains in need of at least one more volunteer.

Publications

Meeting March 7, 2022

- A photo-management solution is needed for photos submitted to the *Kala Pointer* and ultimately the new website.
- Discussed the need for a plug-in for the new website that would allow the committee to create and share the *Kala Pointer* with fewer hours spent on layout.
- Discussed document that the committee

created after being approached about making a recommendation for website oversight

- this document will be presented to the Board along with additional information provided by the committee’s Board alternate Gary Obermeyer

Tree

Meeting March 10, 2022

- Tim Twiford was introduced as a prospective new member of the Committee. Mr. Twiford was then approved by the committee membership and their recommendation is to be forwarded to the KPOA Board for confirmation.
- There was a discussion of the value of the membership viewing the trees along the route of the upcoming tree evaluation of KPOA Common Areas as an educational exercise. This includes the value of learning to recognize conditions that lead to “root rot.”
- Richard Hefley, consulting arborist, has offered to address the Tree Committee membership.
- Finally, member Kim Titus has offered to act as a liaison to the Architectural Committee to ensure better communication between the two committees. ♦



Boxes, Posts and House Number Signs

Grounds Committee

What is the story on the wooden newspaper boxes found along the road outside many Kala Point homes? Can you add a metal dragon to the top of that box? Is it okay to remove a lichen-covered box full of spiders



and stick a metal cap on the post instead? Do you need permission to build a new wooden newspaper box? Can you transform your wooden post into a totem pole? All good questions.

For many KPOA homes, a wooden newspaper box was installed at the time of construction to standardize the look of the place and to display the red house number

sign. The Architectural **APP-III-2-H-8** section states “No structure or object may encroach on KPOA setbacks except the extension of the driveway to the street, post mounted lighting at the extension of the drive, a wooden newspaper box, and the red fire number (house) sign.” Most setbacks start at 25 feet from the center of the paved road.

This setback is considered part of the common area or under the jurisdiction of the general manager for any additions or improvements. Again, a quote “except for driveways, newspaper boxes and house number posts” discussed in the **KPOA Rules and Regulations** in section E under Alterations to Common Areas. These improvements must not interfere or increase the workload of the



maintenance staff, the owner must maintain these improvements, and if the owner is asked to remove this improvement, then it must be removed within 14 days or be removed by KPOA at the owner’s cost

Translation, some Kala Point homes may

begin with a wooden newspaper box, but all homes get a wood post to display the required Jefferson County emergency house number sign. Over time the home owner will have to maintain this “improvement.” Wood decays, homes no longer get delivery of a newspaper, the wooden box falls apart, or perhaps the post falls over. You can replace, remove or improve this post or wooden newspaper box. Just be careful to keep the size and location such that the KPOA grounds crew can do their setback work. The KPOA administrative office has a construction pattern for a standard wood newspaper box sized to fit the plastic liner to keep the paper dry.

Homes do not have to have a newspaper box, but they must have something to post or display the required Jefferson County red house number sign. This sign is how emergency responders find you or your neighbor’s home. The sign needs to be unobstructed and reflective or easily seen 24 hours a day. Computers or GPS accuracy can be off by 50 feet, which can easily be an entire driveway. If you need a new sign, call the county at 360.379.4450 and they will sell you one for the cost of the sign. If you have propane, you will need to add the flame decal which is available at the KPOA office.



So, yes, you can add metal art to your box, you can remove your old box, you can decorate your post, build a new wooden newspaper box or a similar box, or top your wooden post with art instead of a box. This can all happen without submitting plans or approval, just keep that red house number sign visible, reflective and located on a post near your driveway so you or your neighbor can be located easily in an emergency. ♦



Fun and Fabulous Furnishings Make a House a Home

The Habitat Store in Port Townsend has furnished many local homes over the past 20 years. Every sale at the store supports Habitat EJC’s efforts to build affordable homes throughout East Jefferson County.

“People love to shop here,” says Donita Durgan, a store staff member. “A lot of people come from out of town, too, because they see our sign from the road. They find all kinds of things here: small items like vases and figurines, and large pieces of furniture. Customers get excited because they find special things to personalize their homes.”

A house, or apartment, or boat — or any place you live — becomes home when you personalize it. The more donations of household items, large appliances and tools that the store receives, the more it supports the community — and makes people happy.

“In December, a woman came in and found several Christmas Village figures that represented her friends and family,” says Carolyn Braun, a Habitat store volunteer from Kala Point. “She found a nurse with a baby, and her daughter is a maternity nurse. And she found a fire truck and police car, which represented the professions of two of her best friends. It’s so much fun to see what comes into the store and to hear the stories of why people buy items.”



Volunteers take part in making the store an attractive, welcoming environment for shoppers.

To become a volunteer, you take a short orientation and then choose how you contribute your time to Habitat. In the store, volunteers accept and sort donations, price items, arrange

merchandise in the store, provide customer service, and more. Some volunteers even help pick up donations or deliver purchased items.

“My favorite part is going through the donations,”



Habitat store volunteers and staff

says Kate Hawley, who volunteers Tuesday and Thursday mornings at the store. “It’s fascinating. People donate really great things because Habitat makes sure they go to good homes. I’ve learned a lot about antiques from the staff, customers and other volunteers.”

Habitat’s store is located at 2001 W. Sims Way in Port Townsend. It’s open Tuesday to Saturday from 10 a.m. to 5 p.m. Volunteers and store staff welcome guests from all over the community, and often beyond. And we offer complimentary pick-up of large items that are being donated. If you have items to donate, you can call the store at 360.385.9653 or stop by and talk with an associate.

If you are interested in volunteering at the store or with Habitat in general, email Amy at volunteer@habitatejc.org or call us at 360.379.2827. You can learn more at habitatejc.org/new-volunteers/. We look forward to meeting you! ♦

Send Us Your Photos!

Do you have images that showcase the character of Kala Point?

New images that highlight the natural setting, facilities and people of Kala Point will be featured in the *Kala Pointer* or [KPOA website](https://www.kpoa.com).

Please submit your full-resolution jpegs, one at a time, to photos@kalapoint.org

Thank you! ♦

Neighborhood Classified Ads

Neighborhood Classified Ads cost only 10 cents per word.
Please pay at the Kala Point office when you submit your ad.

Attention Grand Parents

Doll Clothes Designed and Sewn



by **Sharon Ross**
360-385-2365
Sizes 10"-31"

etsy.com "wonderfuldollclothes"



Trailer for Sale

2015 Escape 19 fiberglass travel trailer. Built in B.C. A/C and solar. Excellent condition. In KPOA storage lot B. \$25K. Dave @ 360.774.6093

Are you planning to sell your KP home or condo? I am a current renter on Sailview looking to purchase up to \$600K.

I am a Real Estate Broker so there would be no real estate fees involved. Additionally, if you are looking for a renter, my lease ends in May.

Jolene Winter: 425.830.3717

Commercial Advertisers

When you patronize one of our advertisers, please tell them you saw their ad in the *Kala Pointer*. We want them to know their advertising dollars are well spent. If you're satisfied, please tell your friends and neighbors. If you're not satisfied, please tell the advertiser.

Goodbye Ugly Tree Stumps!

BRETT'S STUMP GRINDING

360-774-1226

bretts-stumpgrinding.com
licensed-bonded-insured WA Lic# BrettSG943L2



95 Google Reviews
All 5-Star!

Winspear Construction Services LLC

Construction Projects

Residential • Commercial

Free Estimates - Licensed, Insured and Bonded

David Winspear • 360-797-5254

winspearcs@gmail.com


Contractor #WINSPCS830LB



Longevity
MASSAGE & BODYWORK

- Deep Tissue
- Abdominal
- Relaxation
- Cupping
- Trigger Point
- Gua Sha

P. 425.890.7169
E. Audrey@longevitybodywork.com
W. Longevitybodywork.com
License #MA61149306



R&M Services
Handyman

James Kenoyer
Owner

360-301-2683

430 Montgomery Ln.
Port Ludlow, WA. 98365

randmservicesrm@gmail.com
Lic. # RMSERS*835B3/ Insured and Bonded



Legwork Handyman Services
Derf Green
970.227.6702
Licensed Insured Bonded

Kala Point resident

Check Your Information

There is a *Kala Point Member Directory* available on the KPOA website. Login to your account on the KPOA website to review your information to ensure it's correct.

If your entry needs updating, contact the KPOA office at **360.385.0814**.

Office Hours:

Monday–Thursday 8:30 a.m. – 2 :30 p.m.

Friday 8:30 a.m. – 1 p.m.

Closed weekends and major holidays ♦

Lost and Found

If you lost something while enjoying Kala Point's common areas, there is a good chance someone found it.

The KPOA office has a collection of found items just waiting to be reunited with rightful owners.

Please call the office at **360.385.0814** with any lost-and-found inquiries. ♦



Original artwork throughout by
[freepik.com](https://www.freepik.com)



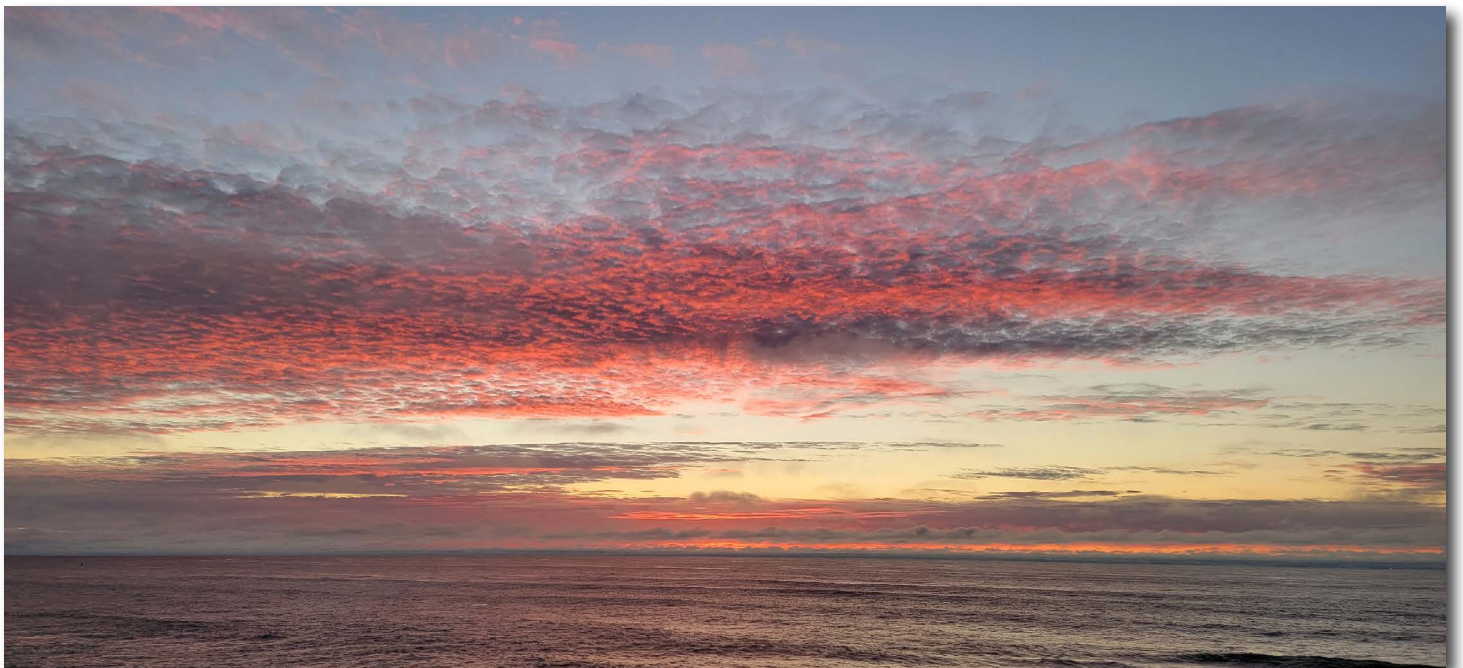
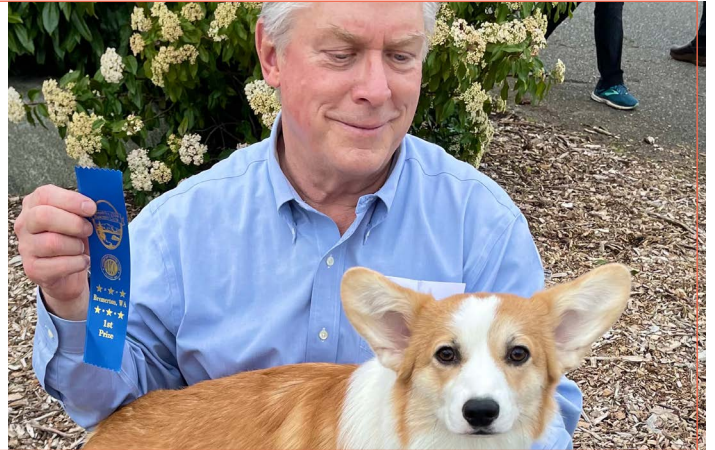
Kala Pointer Newsletter

Kala Point Owners' Association
1760 Kala Point Drive
Port Townsend, WA 98368



You Go, Girl!

Congratulations to Mike and Debbie
Burk for Annie Marie winning her class
at the Peninsula Dog Fanciers' Club
show in Bremerton. May it be the first
of many wins.



Sky Art • Dick Nockleby

If you know of anyone who is not online or does not subscribe to the *Kala Pointer*, encourage them to subscribe or let them know printed versions of the newsletter are available on the ground floor of the Administrative Office.