

# Kala Pointer



The *Kala Pointer* is a Monthly Publication of the Kala Point Owners Association

February 2020

## President's Message Joe Englander

Even though the 2020 Budget officially passed, the Board of Directors is very aware that a large number of members voted against the budget that we proposed. As a result, the Board and the Finance Committee have repeated their effort to create a spending goal that would be acceptable to most Kala Pointers. A tremendous amount of volunteer time has been spent going through every line item in the budget and rating it for its effect on Kala Point as a whole. There were many suggestions from the membership. There were no sacred cows; everything was re-examined.

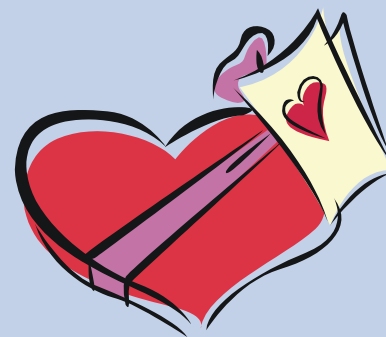
Some items that might casually seem to be immaterial, turn out to be critical. For example, some suggested we skip this year's scheduled audit because it would save literally thousands of dollars. But doing so could have catastrophic effects. First of all, to comply with Washington State law, we are supposed to have an audit every year unless the membership specifically votes to allow not doing so. We have done that for each of the past two years, resulting in substantial savings for the membership.

According to our own governing documents, however, we must conduct an audit every third year—which is this year—and whenever there is a change in CFO. These independent audits are fundamental to having tight financial controls and giving you the assurance of good management. Since the only reason we wouldn't have an audit is a short-term financial savings, not having one after already having delayed for two years would actually be financially negligent. It risks eroding the system of controls the Internal Controls Committee and the Finance Committee carefully established and ultimately risks the strong financial position which KPOA has maintained.

[Continued on page 5](#)

## In This Issue

Board Report.....	2
Board Candidates Sought .....	3
Calendar of Events .....	6-7
“Meet Kala Point” Event .....	8
EJFR Fundraiser.....	8
Kala Lily's Tips.....	10
New Foxfield Home .....	11
Through the Lens .....	12-13
Committee Reports .....	14
Know Your Neighbors .....	18
Victorian Heritage Festival ...	19



### February *Kala Pointer* Staff

*Editor:* Mike Burk

*Copy Editors:* Marilyn Berry,  
Hilary Newell, Suzanne Eggleston

*Chair:* Suzanne Eggleston

*Secretary:* Hilary Newell

*Advertising:* Gail White

*Masthead Photo:* Angela George

### February Contributors

Marilyn Berry	Cathi McDade
Patti Biazzo	Dale Moses
Mike Burk	Hilary Newell
Suzanne Eggleston	Libby Nordland
Anne Englander	Terry Rose
Joe Englander	Scott Rovanpera
Angela George	Bob Segui
Mike Harte	Diane Solvik
Michael Machette	Colette Swan

### March Newsletter Deadline

Deadline for the March 2020 issue of the *Kala Pointer* is February 20.

**Submit your articles to:**

[YourKalaPointer@kalapoint.org](mailto:YourKalaPointer@kalapoint.org)

Our *Letter to the Editor* policy can be found at

[KalaPoint.org](http://KalaPoint.org)

## 2019–2020 Board of Directors

[Click names to Email](#)

President [Joe Englander](#)

Vice President [Kim Titus](#)

Secretary [Dale Moses](#)

CFO [John Oliveira](#)

Director [Jean Erreca](#)

Director [Tom Gillespie](#)

Director [Dan Kimball](#)

Director [Steve Reed](#)

Director [Scott Rovanpera](#)

[Email the Entire Board](#)

## 2019–2020 Committee Chairs

Architectural: [Caroline McNulty](#)

BMAC: [TBA](#)

Elections: [TBA](#)

Emergency Preparedness (EPC):  
[Anne Englander](#)

Finance: [John Oliveira](#)

Grounds: [Keith Larson](#)

Internal Controls: [David Harrah](#)

Personnel: [Joe Englander](#)

Publications: [Suzanne Eggleston](#)

Social Plus:

[Char Quandt](#), [Diana Zinn](#), [Patti Biazzo](#)

Tree: [Mark Kleinman](#)

## What Happened at the January 2020 Board Meeting?

[Dale Moses, KPOA Board Secretary](#)

Your KPOA Board of Directors met at 1 p.m. on Tuesday, January 14, 2020, in our KPOA clubhouse. All nine Board members were present. There were 26 people in the audience when we started. Board meeting documents were available prior to the meeting on the KPOA website (under the *Members* pull-down menu; select *Board Meeting Files*). Items from this meeting included:

- There were over a half-dozen inputs from the audience at the beginning of this meeting: most were about pitbulls at the beach and possible Board actions; several others related to changing our CC&Rs for budget approvals.
- There were 35 correspondence items that came to the Board since the last meeting, many concerning the budget vote and a few on IT issues. A list of all inputs is available; click [here](#).
- The General Manager reviewed recent activities including the snowfall plowing that day.
- We spent nearly an hour reviewing Board guidance to the Finance Committee (FC) to reduce spending in 2020. We agreed that we wouldn't want a reduction in amenities or to postpone maintenance. Our CFO John Oliveira has done a great job arraying possible topics for discussion by the FC at their meetings January 16 and January 23 based on many inputs he received and other considerations including risk assessments. The Board will be reviewing the FC's recommendations at our February Board meeting with the proposal posted prior to the Board meeting.
- We took a break after these discussions.
- The Board then voted to create a resolution for a membership vote this summer to update our CC&Rs to get in synch with the State RCWs on approving annual budgets. We'll review the wording of a possible resolution next month.
- We discussed Board options coming out of a recent incident of pitbulls attacking a dog on the beach. The Sheriff's report on the incidents wasn't declarative on future actions. After hearing many suggestions, the Board decided to create an ad hoc committee to review possible changes to our KPOA rules.

[Continued on page 3](#)

The Kala Point community is a common-interest residential homeowner association (HOA). When purchasing or building within Kala Point, homeowners agree to follow the HOA's governing documents, which include: Conditions, Covenants and Restrictions of Record (CC&Rs); Rules and Regulations; By-Laws; and detailed Administrative Policies and Procedures (APPs). APPs are Board-enacted rules. The protective umbrella of these governing documents works in the best interest of all homeowners ensuring higher standards of neighborhood appearance and enhancing the collective value of the homes.

**Continued from page 2**

- Committee reports were presented.
- To save money, we deleted the 2019 Board goal on programming a global search ability on our website documents.
- There were several clarifying questions during member inputs at the end of the meeting.

The Board adjourned at 4:07. If you would like to learn more about this Board meeting, feel free to listen to the recording of the meeting (available from the office) or email the Board on a specific topic. ♦

**Dog Owners Wanted**

*Scott Rovanpera*

The KPOA President asked me to form an ad-hoc committee to explore how Kala Point can be a friendly community for dogs. Because dogs do not have a voice in this community, I am asking their owners to volunteer and help review the current dog policy and how we can improve it.

I'm asking any Kala Point residents (dog owners and non-owners) to help me come up with workable and respectful solutions to make Kala Point safe for its residents and its dogs. Please contact me by email at [kpoaboard\\_rovanpera@kalapoint.org](mailto:kpoaboard_rovanpera@kalapoint.org) if you would like to join the committee. A meeting date and time will be set once the committee has been appointed. 🐾

**Potato Bake & Chili  
Fundraiser for EJFR**

SAVE THE DATE!

**Saturday, March 28, 5–7:30 p.m. at the clubhouse**

Meet our East Jefferson Fire Rescue first responders and thank them personally for their service to our community.

Give generously before, during or after the Potato Bake event. All proceeds go to EJFR, to be used at their discretion toward medical supplies, equipment, training, etc.

Reservations will be taken, first come-first served, beginning March 2.

Watch for more details in next month's *Kala Pointer*. More information on page 8. ♦

**Board Candidates Sought  
for 2020 Elections**

*Elections Committee*

Our Board of Directors is made up of representatives you elect to govern the Kala Point Homeowners Association (KPOA). Each year, three of the nine board members rotate off the board, and we elect three new directors to replace them. This coming July, Joe Englander, John Oliveira and Kim Titus will end their three-year terms; the Elections Committee is now seeking candidates to fill the three vacancies and help guide and manage our Kala Point community.

Consider running for the Board and getting involved by volunteering some of your time and talents to our neighborhood. It's not a difficult job; you need common sense, communication skills and a willingness to make decisions on behalf of Kala Point residents.

Ideally, candidates are familiar with Kala Point rules and regulations and may have participated on one or more committees, although this is not a requirement. Once elected for a three-year term, each director serves on two committees—one as a Board representative, and the other as a Board alternate. The time required is usually about one to two days per month. This includes one monthly Board meeting, one or two committee meetings, reading and responding to Board emails, and doing limited research on topics under discussion.

If you're interested in being a candidate for the Board, please contact a member of the Elections Committee, our General Manager Keith Larson, or any current Board member. To be considered for the July election, you must declare your intention to run, in writing, to the General Manager [gm\\_larson@kalapoint.org](mailto:gm_larson@kalapoint.org) by Wednesday, April 15.

We'll be holding a "Meet Kala Point" social event on Sunday, February 23, 4–6 p.m. at the Clubhouse, to acquaint our newer residents with how Kala Point operates and is governed. If you're interested in serving or want to learn more, please join us.

**One More Official Elections Committee Reminder:**

Member-Submitted Resolutions must be completed and submitted to the Board by February 23, which marks 20 calendar weeks prior to the Annual Membership Meeting. For complete information on the procedures for such resolutions, see [APP IX-2, Elections Committee Procedures #12](#) (*Procedures for all Member-Submitted Resolutions to be voted on at the Annual Membership Meeting*).

Mike Burk, Chair, Elections Committee  
[mike@mikeburk.com](mailto:mike@mikeburk.com) or 562-883-5694 ♦



## In Search of New Exercise Equipment for the Clubhouse

*Mike Harte*

A few weeks ago several members discovered upon going to the fitness room in the Clubhouse, that the weight machine many folks use and rely on for upper-body fitness exercising was gone — without explanation.

Inquiry with KP management indicated the machine had been removed because it was apparently broken. No suggestions of replacement of this piece of equipment were made at this inquiry. And, as signs in the fitness room clearly indicate, all equipment available in that room has been donated.

The loss of this piece of equipment is, of course, a great disappointment to several members in the community, as it was the only piece of equipment that allowed users to focus on exercising upper-body muscle groups only (lateral pull-downs, curls, pectoral exercises, etc.).

As this equipment was donated by a KP member at some point in time and not purchased by KP Management, KP Management has no plans for replacement. This means it is up to KP members to locate another piece of fitness equipment with a comparable upper-body focus.

This is where you, dear readers, come in. Do any of you have, or know someone who has, serviceable upper-body fitness equipment (multi-functional) that is no longer being used or could perhaps be put to wider use in the KP Clubhouse Fitness Room? Would you, or that someone you know, consider donating such a piece of equipment?

If so, let's talk!

Contact KP member Mike Harte at: 970.224.0651 or [mike@coyotecamp.com](mailto:mike@coyotecamp.com) to relay information on the equipment/machine you would consider donating. He will make arrangements for the selected equipment/machine to be removed from your home and installed in the KP Clubhouse Fitness Room.

Thanks so much! ♦



*Fort Worden Walkers • Colette Swan*

## Did You Make a Resolution to Be More Active in 2020?

*Libby Nordland*

Winter has come to Kala Point and sometimes it's too dark and stormy outside for a morning walk. Not to worry, activity options are available at our very own clubhouse. No need to feel guilty about all those New Year's resolutions. Head on over to our clubhouse to meet your new goals.

There is more than just the exercise room filled with equipment. We have two classes that meet in the main room throughout the week. First is the Women's Exercise Class that meets Monday, Wednesday and Friday from 9–10 a.m. We follow low-impact DVDs for seniors, viewed on the big-screen TV. All you need are hand weights, and let the fun begin.

Second is the Tai Chat Class on Tuesday and Thursday from 9–10 a.m. We follow a 24-form Tai Chi while enjoying beautiful views from the clubhouse and listening to soothing music. Tai Chi is great for balance. We call the class Tai Chat because we also chat about what is going on in Kala Point and in town while doing Tai Chi at the same time. All are welcome in this class.

For questions about the exercise class, contact AJ Laverty at 360.379.6386. For questions about Tai Chat, contact Libby Nordlund at 425.273.4933, or [eanordlund@aol.com](mailto:eanordlund@aol.com). ♦

**Continued from page 1**

Another example of a repeated suggestion was to eliminate electronic voting and return to hand-counting paper ballots. We have at least two referendums per year at a total cost of around \$6,000 or \$5 per Lot, Home or Condo (LHC) per election. To achieve this savings, we would have to have a slew of committed volunteers willing to work for several days. I have been told that the number required previously was a dozen volunteers. Why so much time and so many people? Because it isn't as simple as a one-time-through totaling. Each ballot needs to be checked for validity even before counting; that means, besides confirming it is a real ballot from a real member, it has to be confirmed that there is only one ballot for each LHC. Then the secret ballots need to be separated from the identification. Then each item on the ballot, whether it's three board members or five business issues, must be totaled and re-totaled and possibly recounted again if there are any discrepancies. There are a whole series of procedures previously used that can be resurrected. But to implement this savings, members have to actually and seriously volunteer and show up to do the work. If we go ahead in July with paper ballots and insufficient volunteers actually show up, we'll be up the creek for the Annual Membership Meeting which includes election of Board Members. There is also the liability of accusations from non-volunteers that those who did volunteer put their thumb on the scale. These accusations were so strong in the past that a voting audit had to be conducted after the fact. So, KPOA can save \$6,000 if you volunteer or you can pay \$5 per election not to have to volunteer.

These kinds of choices are not easy and every line-item has its constituency. No matter what happens, some members are going to be unhappy. But you should know that the Board and the Finance Committee have heard and have paid attention to the membership, and have put in the time and good faith effort to try to achieve a more generally acceptable 2020 Spending Plan. ♦

**Benefits to Being a Senior**

Kidnappers are not very interested in you.

In a hostage situation you are likely to be released first.

People call at 9 p.m. and ask, "Did I wake you?"

There's nothing left to learn the hard way.

# Kala Cares In Memoriam Fred White

**Finance Committee News**

The Finance Committee's "**Suggested Spending Targets for 2020**," which will be submitted to the Board of Directors for their consideration at the meeting on February 11, will be posted to the KPOA website for member consideration. It can be found at [www.kalapoint.org](http://www.kalapoint.org) > members > Board Meeting Files or <https://www.kalapoint.org/wp-content/uploads/board/>

**Woodworkers Group**

*Michael Machette*

We've started a Woodworkers Group in Kala Point and held our first meeting in January. Potential activities include demonstrations of active projects, tours of our shops, field trips to local resources, and opportunities to share ideas, discuss woodworking issues, and get dusty.

Currently we have 12 members, and we may limit the group to 15. The ringleaders are Bob Eggleston, Michael Machette, and Steve Reed. The other members are Dan Coffman, Don Edgar, John Galanes, Charlie Hicks, Jim Newman, George Seifert, Eileen Svoboda, Frank Ward, and Merlyn Wurscher.

Our meetings will be on the first Tuesday of every other month. Timing or day may change as we find our way forward. Our first event on February 4 is a tour of the Port Townsend Woodworking School in Fort Worden, followed by a tour of the Edensaw facilities. If you are an active or nascent woodworker, contact me ([machette1550@gmail.com](mailto:machette1550@gmail.com), 360-531-2441), or one of the other members for more information. ♦

# February Calendar of Events *Suzanne Eggleston*

## February 1, 2, 8, 9

**Visions in Motion.** Lively music, original art, and intriguing explorations of history and freedom are part of an experimental art event created by artist Andrea K. Lawson and her team for Key City Public Theatre's new Colab program. Theatre, poetry and dance draw the viewer into a colorful and challenging world where the cycles of oppression, decay and renewal are made visible. **TIMES:** 7 p.m. on February 1 and 8; 2 p.m. on February 2 and 9. **COST:** \$15–\$40. **LOCATION:** Key Center Theatre, 419 Washington St. **CONTACT:** [sales@keycitypublictheatre.org](mailto:sales@keycitypublictheatre.org), 360.385.5278, [keycitypublictheatre.org/](http://keycitypublictheatre.org/)

## February 3, 10, 24

**Farming Film Festival.** The third annual festival features “The Permaculture Orchard: Beyond Organic” on February 3, “Abundance on a Dry Land” on February 10, and “One Man, One Cow, One Planet” on February 24. **TIME:** 12–2 p.m. at the Port Townsend Public Library; 6–8 p.m. at the Jefferson County Library in Port Hadlock. **COST:** Free. **LOCATION:** PT Public Library, 1220 Lawrence St.; Jefferson County Library, 620 Cedar Ave., Port Hadlock. **CONTACT:** [friendsofthetrees@yahoo.com](mailto:friendsofthetrees@yahoo.com), [jcLibrary.info](http://jcLibrary.info), [PTpublicLibrary.org](http://PTpublicLibrary.org)

## February 6

**Lecture: Garden Planning for Successful Seed Saving.** Jadyne Reichner of Oatsplanter Seed Farm will share tips for planning your garden, the genetics behind seed production, choosing the best seed to save, and how to harvest, clean, and store seeds. **TIME:** 7 p.m. **COST:** Free. **LOCATION:** PT Public Library, 1220 Lawrence St. **CONTACT:** [ptlibrary@cityofpt.us](mailto:ptlibrary@cityofpt.us), 360.385.3181, [ptpubliclibrary.org/](http://ptpubliclibrary.org/)

## February 8

**Chimacum Dinner & Auction Benefit.** The fourth annual event will benefit ASB (Associated Student Body) clubs and athletics at Chimacum Junior/Senior High. The event will feature a taco bar and silent auction. **TIME:** 6 p.m. **COST:** \$20. **LOCATION:** Chimacum Commons, 91 West Valley Rd, Chimacum. **CONTACT:** 360.302.5908, [csd49.org/](http://csd49.org/)

## February 9

**City of Angels Ensemble.** In curating this program of chamber music, Artistic Director Lucinda Carver selected a handful of favorites and invited world-class musicians from Los Angeles to join her in performing them. Lucinda will play piano with violinist Tereza Stanislav, violist Rob Brophy and cellist John Walz in a program featuring Mozart's “Quartet for Piano and Strings in G Minor, K. 478,” Ravel's “Sonata for Violin and Cello” and Brahms' “Trio No. 1 in B Major for Violin, Cello and Piano, Op. 8.” **TIME:** 2 p.m. **COST:** \$45. **LOCATION:** Wheeler Theater at Fort Worden, 25 Eisenhower Way. **CONTACT:** [info@centrum.org](mailto:info@centrum.org), 360.385.3102, [centrum.org/](http://centrum.org/)

**Lecture: Toxic Phytoplankton Of The Pacific Northwest.** Environmental Biologist Neil Harrington from the Jamestown S'Klallam Tribe will give this talk as part of the “The Future of Oceans” lecture series. Neil will draw on his 17 years of experience focusing on harmful algal blooms, shellfish safety, invasive European green crab monitoring and more. **TIME:** 3 p.m. **COST:** \$5; free for Octopus and Orca Donor Circle Members, students and teachers. **LOCATION:** The Fort Worden Chapel, 200 Battery Way. **CONTACT:** The Marine Science Center at [info@ptmsc.org](mailto:info@ptmsc.org), 360.385-5582, [ptmsc.org/](http://ptmsc.org/)

## February 9–10

**Dinner Theater.** Enjoy a four-course meal at Alchemy Bistro & Wine Bar while being entertained by Key City Theater Company. This event happens just twice a year and promises to be a unique, fun night out on the town. **TIME:** 6 p.m. on both nights. **COST:** \$58 per person, which includes a show, dinner and gratuity (drinks not included). Buy tickets [here](#). **LOCATION:** Alchemy, 842 Washington St. **CONTACT:** 360.385.5278, [keycitypublictheatre.org/](http://keycitypublictheatre.org/)

## February 10

**Sea Tales on a Winter's Eve.** Author, actor and sailor Emiliano Marino gives a dramatic reading of excerpts from *Moby Dick*, Herman Melville's epic tale of life aboard a New England whale ship in the 1800s and the quest of an obsessed captain to wreak revenge



## February Calendar of Events

upon a notorious white whale. Traditional nautical victuals supplied. Bring your own chair or cushion. **TIME:** 4–6 p.m. **COST:** Suggested \$20 donation. **LOCATION:** The Artful Sailor, 410 Washington St. **CONTACT:** [theartfulsailor@gmail.com](mailto:theartfulsailor@gmail.com), 360.344.8120, [theartfulsailor.com/](http://theartfulsailor.com/)

### February 14 *Valentine's Day*

#### February 15

**Heart Stories: Raw Words From the Heart.** Experience the primal joy of human connection through the creative expression of vulnerable, personal stories. Featuring Charles Morris, mindfulness pioneer at Microsoft; Jefferson Greene, a Columbia Plateau native artist and educator; the Port Townsend Poetic Justice Theatre Ensemble; stories from more than a dozen local storytellers; and the release of the second edition of *Storyborne* magazine. **TIME:** 4–7 p.m. **COST:** Free; sign up for the [Storyborne newsletter](#) to reserve your ticket online. **LOCATION:** Starts at the Cotton Building, 607 Water St.; other events to be held at the Pope Marine Building, the Jefferson County Museum of Art & History, and Northwind Art Center. **CONTACT:** [bonnie@storyborne.com](mailto:bonnie@storyborne.com)

### February 17 **President's Day**

#### February 21

**Art in Action: Bob Triggs Fly Tying Demonstration.** Lifetime outdoorsman, fly fisherman, boatman and guide will demonstrate fly tying. **TIME:** 4 p.m. **COST:** Free. **LOCATION:** Port Townsend Library, 1220 Lawrence St. **CONTACT:** [ptlibrary@cityofpt.us](mailto:ptlibrary@cityofpt.us), 360.385.3181, [ptpubliclibrary.org/](http://ptpubliclibrary.org/)

#### February 22–23

**Fort Ebey Kettles Trail Run.** Run or watch the half and full marathon races through Fort Ebey State Park in the middle of Whidbey Island. The following day features 5k and 10k runs. **TIME:** 9 a.m. start time for marathon and 9:40 a.m. for half marathon on February 22; 9:30 a.m. start time for 10k and 10:15 a.m. for 5k on February 23. **COST:** Free to watch; \$34–\$70 (depending on time of registration and

event) to participate. **LOCATION:** Fort Ebey State Park, 400 Hill Valley Dr., Coupeville. **CONTACT:** [events@mergeo.com](mailto:events@mergeo.com), 206.291.8250, [nwtrailruns.com/](http://nwtrailruns.com/)

#### February 23

**Literature in Music Concert.** Port Townsend Symphony Orchestra will perform “Merry Wives of Windsor Overture” by Nicolai, “Romeo and Juliet Fantasy” by Tchaikovsky, “Pelléas et Mélisande” by Fauré, and “Concertino for Clarinet in E flat” by Carl Maria von Weber—featuring soloist Kincaid Gould. The Port Townsend High School Orchestra will make a guest appearance. **TIME:** 2 p.m. **COST:** Free; donations appreciated. **LOCATION:** Chimacum High School Auditorium, 91 W Valley Rd, Chimacum. **CONTACT:** [Contact@PTSymphony.org](mailto:Contact@PTSymphony.org), [ptsymphony.org/](http://ptsymphony.org/)

#### February 27

**Wine Dinner: A Taste of Italy with Podere Ruggeri Corsini.** Listen, learn and enjoy traditional Italian flavors at this wine dinner that will feature Nicola Argamente, the winemaker from Podere Ruggeri Corsini in Monforte d’Alba, Italy. Chef Donald Cobb Jr. will thoughtfully prepare several courses to pair with Podere Ruggeri Corsini’s Nebbiolo, Dolcetto, Barbera and more. **TIME:** 6–8 p.m. **COST:** \$65 per person; make reservation at [resy.com/](http://resy.com/). **LOCATION:** Reveille at the Commons, 200 Battery Way. **CONTACT:** [sales@fortworden.org](mailto:sales@fortworden.org), 360.344.4400 ext. 522, [fortworden.org/](http://fortworden.org/). ♦

### Recurring Kala Point Clubhouse Events

**Board Meeting:** Second Tuesdays at 1 p.m.

**Bridge:** Mondays at 11 a.m.

**Exercise Class:** Monday, Wednesday and Friday, 9 a.m. Bring hand weights. If interested in attending, call AJ Laverty, 360.379.6386

**Tai Chat:** Tuesdays and Thursdays, 9–10 a.m. 24-form Tai Chi with breaks for chatting. All are welcome. Libby Nordlund, 425.273.4933, [eanordlund@aol.com](mailto:eanordlund@aol.com). ♦



**Kala Point Elections  
Committee Presents:**

## Meet Kala Point

February is the perfect time to get involved in Kala Point! We live in a great place — it's no secret that volunteers help keep it that way.

New and old residents are invited to our **"Meet Kala Point"** gathering to learn how our community works and find out how you can make a difference. You'll meet a few neighbors too.

### We'll talk about:

- How we're governed
- Board of Directors
- Our various committees
- Ways you can contribute your time and talents to your community

**WHEN:** Sunday, February 23

**TIME:** 4–6 p.m.

**WHERE:** Kala Point Clubhouse

**HOSTED BY:** The Kala Point Elections Committee

This event was originally scheduled for January 25; we moved it due to conflicts with facility uses. ♦

## SAVE THE DATE!

### Potato Bake Chili Fundraiser for East Jefferson Fire Rescue

**Saturday, March 28, 5–7:30 p.m.**

*Anne Englander*

It's almost that time of year when Kala Point residents unite and pay tribute to our first responders, the firefighters and EMTs of East Jefferson Fire-Rescue (EJFR). When we call them, they respond promptly. It's our turn to respond and thank them by supporting our annual Potato Bake fundraiser in their honor and giving generously.

This year's Kala Point/EJFR Potato Bake is scheduled for Saturday, March 28, at the clubhouse. Doors will open at 5 p.m., and reservations will be taken, first come-first served, beginning on March 2. Watch for more details in next month's *Kala Pointer* and on the bulletin boards.

The minimum donation will be \$10 per person at the door, but be generous — these dedicated men and women serve us every day, every night. All proceeds — including your contributions that evening or before/after the event if you cannot attend — will go directly to EJFR. EPC members and friends will be donating their time, talent and some supplies; local merchants will donate the potatoes and condiments; and those of you who attend will provide delicious chili\*, salads, and desserts. It's a true community effort for a great cause.

Some of us have had personal experience and know the relief that comes when EJFR answers our call and shows up to provide their professional, caring services. Our friends at EJFR are an important resource; please help us raise funds to show our appreciation and make their jobs a little easier. The firefighters and EMTs love this event — last year 15 attended from EJFR — so mark your calendar, reserve your spot when registration opens, and come visit with them and with each other on March 28.

\*Yes, there will be chili this year, but without a cook-off competition. We hope several of you chefs will volunteer to share a crock pot of your favorite chili with the rest of us! If you're willing, let us know when you make your reservation. ♦



## Home and Auto First Aid Kits

*Cathi McDade and the Kala Point First Aid Team*

Did your home improvement project go awry? Trip over the cat? It doesn't matter how these accidents occurred because they can happen anytime, especially when we least expect it.

Hello neighbors, and Happy New Year to all. Perhaps this is a good time to review your home and auto first aid kits or even give them an upgrade. This brief article is intended as a friendly reminder about the importance of having your own first aid supplies.

You may be wondering where you can buy a basic home or auto kit. Most large pharmacies like CVS or Walgreens will sell basic kits. In addition, Costco



(pictured) and Amazon are favorite sources. How much you spend will vary, but the approximate cost of a very basic first aid kit for your home or auto is \$25.

The kitchen, bathroom or hall closet are all good choices for storing your home first aid kit. Be sure to take time to add prescription drugs for family and pets. Most basic kits will not be equipped with frequently used over-the-counter non-prescription products, such as antacids, cough medicine, anti-diarrheal medicine, antihistamines, decongestants and pain relievers.

If you use oxygen, be sure to have an extra supply and a back-up power source.

If you are able, consider a more robust kit. These kits are more expensive but will include some very important supplies that may be needed in case of more serious injuries. You can see a good example at [gearbags.com](http://gearbags.com), kit model LXMB10-SKA which currently sells for \$79.99.

Please contact your Kala Point First Aid Team if we can be of any assistance.

Terry Rose, First Aid Committee Chair,  
[rosenkatz1@wavecable.com](mailto:rosenkatz1@wavecable.com)

Cathi McDade, First Aid Committee Member,  
[cathi.mcdade@gmail.com](mailto:cathi.mcdade@gmail.com). ♦

## Polar Poker Pickleball Party

*Michael Machette*

New Year's Day dawned clear and warm — at least by PT standards. Our pickleball club's grounds crew squeezed the Lagoon PB courts and made ready for our 3rd Annual Pickleball Bash.



The polar part is winter play; one year we shoveled snow to play. The poker part is five-card draw: each team gets five cards;

game winners can trade in two cards, but losers can only trade in one. Best hand wins.

We had eight teams this year, matched as best we could by combined skill level. Each team played all the other teams, so that meant everyone played seven matches for a total of 28 games. The poker play was won by Toni Davison and John Galanes,

(pictured) with a winning hand of four sevens. This same team won the overall tournament play with seven wins, no losses and 63 points (guess we didn't match players that well).



Michael Machette and Kathy Thomas were three points back in second, followed by Jed Marshall and Shar Shiroma with 59 points. Various embarrassing and pathetic pickle-themed prizes were awarded.

Following play, lunch was served including spiced (and occasionally spiked) apple cider. It looked like a good time was had by all 16 players. Special thanks go to Doug Kurata, the Egglestons, Louise Tragard and John Galanes, and Pete Smith who pitched in to score and deal cards.

### TEAM RESULTS:

- T Davison & J Galanes >
- M Machette & K Thomas
- J Marshall & S Shiroma
- C Walls & S Eggleston
- D Kurata & H Newell
- L Pierle & M Hoskins
- B Eggleston & M Kubec
- B Winfrey & L Tragard ♦



# Kala Lily's

## February Gardening Tips

*Diane Solvik and Marilyn Berry*



Spring is around the corner and the bulbs are starting to peep out! Snowdrops and crocus are actively blooming.

Gardening is a creative activity that keeps our minds and bodies strong. This is a time of year to dream about our

summer gardens and changes we would like to make. You can spend countless hours planning and deciding what you want to do or what needs attention. Maybe you would like to add a bench or change a flower bed? The dormant and bare state of our winter gardens make it easy to imagine new projects.

Deciduous trees and shrubs should be pruned during January and February, but never remove more than one-third of the branches. Don't prune flowering trees or you will cut off the buds. Wait to prune these trees until after they have bloomed. The date to prune roses has been moved to the very end of February or early March. Hybrid tea roses can be heavily pruned but go easy on the English roses and climbers. Cut all dead branches and cross-growing branches. The same pruning should be applied to Japanese maples.

Ornamental grasses need grooming. Shear back to between two and four inches from the ground. Do not prune the evergreen varieties; comb out any dead grass with your hand. Be sure to wear gloves on varieties with serrated leaf edges. Deciduous grasses should be cut to ground level before new growth appears.

Cut all sword fern fronds to the ground before new growth starts if you haven't already done so.

Divide "Autumn Joy" sedums now. If you are not dividing, cut them way back and continue to cut down until July 4. This will keep them from being leggy in the fall when they bloom. While you are dividing, the snowdrops will be finished blooming by the end of the month and may be divided and transplanted so they multiply and spread.

Cut branches of deciduous trees, such as forsythia and red currant, at an angle to force-bloom indoors. Smash the branch ends and put them in hot water to soak. Place them in water in a sunny window and watch them come to life.

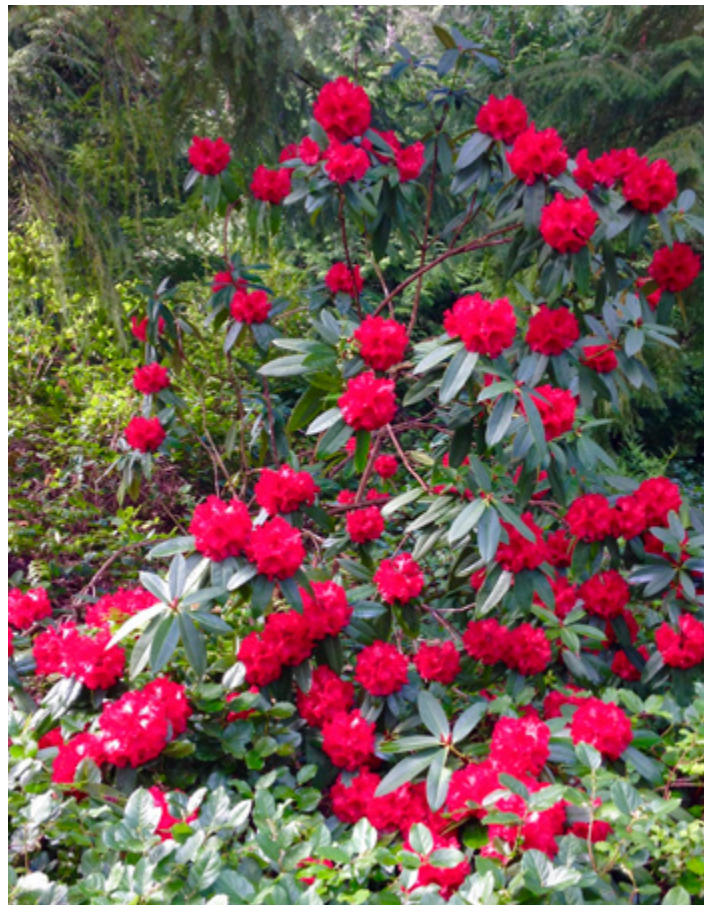
Clean and rake leaves in flower beds before new shoots start to emerge. Mulch all bare ground and beds. Finish moving perennials and planting trees and shrubs. Late in the month, plant bare root roses, fruit trees and shrubs.

The weeds are making a big show. Attack them while they are small. Ten minutes of hoeing now equals two hours of weeding later...and the snap weeds are waiting!

Check for insects on your houseplants and any plants you may be storing in your garage over the winter. Spray them with insecticidal soap whether or not you see any bugs as this does not harm the plant. You may need to do this several times to get rid of the problem as the plants are a warm and cozy home for the bugs. Check dahlia and gladiola bulbs in storage for mold or rot, discarding any that are soft or diseased.

Tune up the lawn mower and clean, oil and sharpen your garden tools before the busy season starts.

If you want to do this yourself, sewing machine oil works well. ♦





# New Home Rooted Among the Firs

*Suzanne Eggleston*

## 231 Foxfield Drive

Rebekah Elowyn and Wayne Lowe decided they were done with California's frantic pace at the end of 2016. Rebekah had already retired from her career as a psychotherapist and Wayne was ready to retire. They put their home on the market and it sold within days.

The couple looked northward to Port Townsend, a place they had explored many times while visiting long-time friends. After looking at a number of older homes, they came to the realization that they absolutely did not want to do another renovation. "We had an older house in Fremont and had done two major renovations," says Rebekah. "We didn't want to do that again!"

---

“ We found Kala Point  
and a perfect .59-acre lot.  
We fell in love with it.  
Woods and sunshine! ”

---

They moved into a rental near the Jefferson County Courthouse in May 2017 and eventually began searching for land and a builder.

"We found Kala Point and a perfect .59-acre lot that Tom and Linda Lemanski owned," says Rebekah. "We fell in love with it. Woods and sunshine!"

The couple chose to work with HiLine Homes. The foundation at 231 Foxfield was poured in January 2018. Rebekah describes the house as "cozy with high ceilings. Some may call that an oxymoron, but it fits! We needed tall walls for hanging artworks that mean a lot to our family. It seems to look eclectic and warm at the same time."



One thing the house does not have is stairs inside or out. The interior of the house is on one level with the exception of a step into the garage. When asked what inspired the exterior's green color, Rebekah answered, "The Doug firs! The hills in the Bay Area of California have a minimum of trees. We are in love with these tall trees that are rooted in their community and ours."

While HiLine was building the house, Wayne and Rebekah began landscaping. As they worked on what they call their "pollinators' meadow," the couple met many neighbors. "Everyone was friendly and curious," says Rebekah. "And we met lots of dogs, all of which were quite friendly! The meadow was a success for bees, birds, bunnies, and of course, deer. Naturally we are hoping to attract butterflies as well."

Six Douglas firs were taken down to build the house, but the couple was diligent about reusing the trees. They put four of the trees in a moving van and drove them to Portland to Dharma Rain Zen Center where their eldest son is the abbot. The trees were used to build a playground structure for the preschool on the DRZC property.

Rebekah and Wayne moved into their new home in November 2018. "It was heaven," says Rebekah. "It was exciting to unpack pieces of furniture and pictures that had been in storage for two years. We know this is where we are supposed to be at this time in our lives. It is beautiful, safe, friendly, and we are very grateful to be here." ♦



# Through The Lens



Moraine Lake, Banff • Bob Segui



Patina • Bob Segui



Pooped Puppy (Jack) • Michael Machette



Winter Rainbow • Angela George



## Through The Lens



Winter Skyline • Mike Burk

### THE KALA POINTER WANTS YOU FOR PRODUCTION HELP

If you have Adobe InDesign experience (Photoshop and Illustrator a plus!), please consider volunteering some time to help produce our neighborhood's monthly newsletter. Duties would entail:

- ★ Placing submitted content into a template
- ★ Selecting a color palette and art for each issue
- ★ Making editorial corrections
- ★ Creating a PDF for the KPOA website

Please contact:

[Suzanne Eggleston](#) or [Mike Burk](#)



## Committee Reports

### Emergency Preparedness Committee

*Meeting: January 9*

Meeting highlights:

EPC will promote periodic Block Captain meetings to:

- Keep Block Captains uniformly informed on EPC concepts and activities
- Get feedback from zone members

Certified Emergency Response Training (CERT):

- There are now 17 residents signed up for CERT, which will start Wednesday, February 12, and continue every Wednesday from 1 to 4 p.m. through April 1 in the main room of the clubhouse
- A field exercise will be held April 18
- There are still three slots left; if you would like to participate, please get in touch with Anne Englander

Planning for 2020 events continues, including

- The East Jefferson Fire and Rescue Fundraiser scheduled for Saturday, March 28, from 5 to 7:30 p.m. in the clubhouse
  - » The fundraiser will be the normal potato bake
  - » Those who want to bring chili are certainly welcome to do so, but this year we are going to make it non-competitive
- A presentation on Pet Care/Rescue will be provided in the Clubhouse on Thursday evening, February 20, by Sara Penhallegon, director of Center Valley Animal Rescue

EPC reviewed communications protocol in the event of winter storms and power outages.

### Grounds Committee

*Meeting: January 14*

Meeting highlights:

- Reviewed the table of responsibilities between the Grounds, Architecture, EPC, Tree Committees, and the General Manager
  - » Final changes were made to the table, suggesting that the Grounds Committee and the Emergency Preparedness Committee will need to rewrite their APPs
  - » The table will provide focus on the important enforcement responsibilities for the Grounds Committee

- Steve Reed provided the latest version of the compliance letter to be reviewed. Compliance letters will be tracked with reference numbers and by date for chronological tracking.
- Scott Rovanner submitted the fourth draft of the supplemental sign policy, and the committee made final changes to the APP. The final draft will be approved at the February Grounds Committee meeting and submitted to the Board of Directors for approval.

### Publications Committee

*Meeting: January 6*

Meeting highlights:

- New editing process worked well for January
- An ad will be created to recruit another designer to share responsibilities as a third layout editor for the *Kala Pointer*
- The February issue and process was discussed and decided upon

### Tree Committee

*Meeting: January 9*

Meeting highlights:

- Gail White has resigned from the committee; many thanks for her service.
- The Tree Committee members are submitting specific goals for the forest assessment document, prepared by Peninsula Environmental, to ensure the product meets KPOA needs
- Of the 14 previously reviewed cases, six are still pending; most of those have not had the work completed as of this date
- Four new cases were reviewed and three approved; the fourth was a tree removal request to address “fire hazard concerns,” but because the tree was more than 10 feet from the house and healthy, the request was denied
- The next meeting is February 13, 2020, in the administration building conference room.

Please note: The FireWise recommendations are available for homeowners’ use; however, tree removals are not a part of the FireWise recommendations or an acceptable reason to remove healthy trees in the landscape. ♦



## Jefferson Public Utility District No. 1 (JPUD) January 2020 Report

*Scott Rovanpera*

Joe Englander, Mark Miller and Bill Kaune met with representatives from JPUD on December 13, 2019, to discuss the emergency water system plan for Kala Point. Representing JPUD was Ken Collins, commissioner; Kevin Streett, general manager; Samantha Harris, water superintendent; and Eric Storey, distribution system operator.

The KPOA staff expressed concerns about JPUD’s response to a major disaster, such as an earthquake or a resulting tsunami. Our questions to JPUD relate to their abilities to respond following a Cascadia Subduction earthquake measuring 8.0 on the Richter scale. JPUD responded that their staffing is limited to respond to a major disaster such as this; if the Kala Point water system was damaged (failed water tanks, broken water mains, electrical failure), KPOA is welcome to haul water from the groundwater well off Highway 19, provided we supply our own water wagon.

Dan Toepper rotated to the position of president of the Board of Commissioners in January 2020. He suggested a revised agenda format to be followed at the BoC meetings.

JPUD has released its “RF Transmitting Meter Opt-Out Policy” to its customers. The policy allows residential customers to replace the standard JPUD radio frequency (RF) transmitting electrical meter with either a digital or analog meter that does not transmit RF current waves. There is building evidence that some people are highly sensitive to RF current and exposure to this energy can cause health issues for them. ♦

## Stuff That Took Me 60 Years to Learn

The most powerful force  
in the universe is gossip.

There is a very fine line between  
“hobby” and “mental illness.”

A person who is nice to you, but rude  
to the waiter, is not a nice person.

Your friends love you, anyway.



Fun was had by all at the Clubhouse as we rang in 2020. Midnight Train Blues Band played from 6–9 p.m. and they had everyone on the dance floor!



Many thanks go out to the band: Bob Longmire, guitar, harmonica and vocals; Barb Dawson, keyboard and vocals; Mike Jones, drums; and David Olsen, bass.

Special thanks for our decorations team Pattie Horvath and Hilary Newell, along with our wonderful paid staff of Shane Ryan and Connie Morgenson. We also thank all that participated in the cleanup.



Social Plus loves to put on fun events like these. If you are interested in hosting a party, please contact the Social Plus tri-chairs: Diana Zinn, Char Quandt or myself. We would love to have you join with your new ideas for neighborhood socials, at the clubhouse or down at the beach.

For all those who enter into my life, I would like to say thanks for always lifting me up and encouraging me to move forward. In 2020, I endeavor to stick to a simple policy of treating each day as a blank page in a 365-page book.

As Benjamin Franklin said, “Be at war with your vices, at peace with your neighbors, and let every new year find you a better man [woman].” ♦

*Patti Biazzo*

# **Animal Rescue Care & Rehabilitation**



**Sara Penhallegon**, Director and founder of Center Valley Animal Rescue (CVAR) has a passion for animals and is a licensed Veterinary Technician and has a Wildlife Rehabber license. She has rich and valuable knowledge to share with us.

**CVAR's experience with large  
and small animal rescue**

**Emergency preparedness for your pets  
Questions and Answers**

**Thursday, February 20  
6:30 to 8 p.m. — Clubhouse**

Doors open at 6 p.m.

Join us for dessert and refreshments with Sara and your neighbors.

For more information, contact: Pattie Horvath, Social Plus/EPC, 360-385-4458

JEFFERSON COUNTY  
MASTER GARDENER FOUNDATION  
PRESENTS

# Yard & Garden 2020 Lecture Series

Jan. 11 – Feb. 15

6 Saturdays

10:00AM – 12:15PM

Port Townsend  
Community  
Center

Series tickets are available online at  
Brown Paper Tickets, PT Garden Center,  
Shold's Nursery, or by calling 360.301.2081

Six lecture series tickets: \$55.00

Day tickets: \$12.00 on a space available basis

Door Prizes • Book Signings

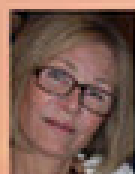
[jcmgf.org](http://jcmgf.org)

Your attendance helps underwrite the Jefferson County Master Gardener Foundation programs.



January 11  
**Jim Ullrich**

Developing Backyard Sanctuaries For Orchard Mason Bees



January 18  
**Christine McCall**

Successful Residential Gardens—Even in Deer Country



January 25  
**Donna Beaton**

Horticultural Therapy: Yes, It is a Real Thing



February 1  
**Karen Chapman**

Designing with Foliage First



February 8  
**Robin Fitch**

What to Expect with Climate Change: Adapting your Yard to Cope with Today's Pacific Northwest Climate



February 15  
**Sue Goetz**

The Herb Lovers' Garden



Jefferson County

Master Gardener Program

WASHINGTON STATE UNIVERSITY  
EXTENSION



## Get To Know Your Neighbors *Marilyn Berry*

### Lisa Johnson

*Belvedere Drive*

Lisa is a native Washingtonian, having lived here all her life. She was born and raised in Seattle and moved to Port Townsend from Anacortes. Having been raised by a dentist and a nurse, it was logical that she would choose a career in a medical field.



Lisa graduated from the University of Washington with a degree in dental hygiene and worked as a clinical dental hygienist, specializing in periodontics and oral medicine, for 26 years. She taught part time for seven of those years at Shoreline Community College. After earning her master's degree, she became a dental hygiene educator at Pacific University where she was a full-time associate professor for two years.

Believing she had more to offer, she became the program director at Pima Medical Institute for four years where she developed a new dental hygiene curriculum. In addition, every winter term Lisa teaches pathology and pharmacology online to stay current with her field.

For years Lisa's hobby has been to develop new or buy and restore architecturally designed homes from people who have not been able to care for them due to aging (the owners of the home she bought were 93!).

She enjoys restoring both the home and landscape to their original intention and glory. A Miller-Hull designed home on South Fidalgo Island was just such a project. The property sat on seven acres, making the yard more than a full-time project! Desiring to work on smaller-scale creative projects (like painting), Lisa opted to purchase a home on less than an acre of land.

When she decided to move from Anacortes, she had no one place in mind but knew she wanted to stay in

the area because of family. She told her realtor broker she would consider "anything between Canada and Olympia" and found Kala Point. Upon driving through the gate to look at a house she found online, she fell in love with the beauty of our neighborhood; and upon seeing the house on Belvedere, she knew it had the potential to be restored into a home she could envision.

Lisa enjoys being creative. Specifically, she likes cooking, entertaining and gardening. There are no current pets, but she anticipates she will have a dog in the near future; indeed, she is already researching German Shepherds and Doberman Pinschers. She loves that Kala Point is an organized neighborhood and has a sense of community.

### Barbara Dawson and Bob Longmire

*Kala Heights Drive*

Do you believe in love at first sight or falling in love after knowing someone for just one week? Do you enjoy Hallmark movies? This is the story of Bob and Barbara.



They moved to Kala Point about five years ago due to what one might describe as a rare event. You see, both had been independent attendees at the Centrum Blues Camp for a couple of years. Bob was from Chicago and Barbara was from Kirkland. It was only while attending Centrum for the third year that they met during an "after-hours jam session." It was during that chance meeting (and lots of talks) that they realized they had shared interests, fell in love, and knew they wanted to spend the rest of their lives together.

The plan began to unfold. Bob returned to his job as a database manager for a healthcare insurance company

## Your Neighbors

in Chicago. Barbara returned to Kirkland where she had been a teacher for 34 years and was currently a junior high Home Arts and Physical Education teacher. Their children thought they were crazy, but they were focused and determined. A real estate friend of Barbara's was contacted to locate a house close to the water in the Port Townsend area. Lastly, both put in for retirement from their respective employers. The rest is history!

Between them they have five children, six grandchildren, and their 10-year-old King Charles Cavalier dog named Winston. Bob plays harmonica, guitar, blues fiddle and the ukulele, while Barbara plays the piano/keyboard. With such a passion for music, it was only logical that they formed the Midnight Train Blues Band. Their band plays at events around town several times a month (currently playing at the Roadhouse) as well as private events. Jointly, they have become active in our community by hosting a holiday progressive dinner at their home and a New Year's Eve party at the clubhouse the past three years. Additionally, Barbara has joined the Architectural Committee. They love Kala Point and the friendly neighbors they've met. While being such active retirees, stay tuned...I'm sure you'll be hearing them around town. ♦

---

### Victorian Heritage Festival Pays Homage to Port Townsend's History

*Scott Rovanner*

I am pleased to announce that my wife Tracy Wirta and I are co-chairing the Port Townsend Victorian Heritage Festival, to be held on March 20–22, 2020. Tracy knew that "Victoriana" would be in our future once we moved up to Port Townsend, so we volunteered to take on the "VicFest." The Victorian Heritage Festival was founded in 1996 to celebrate the social status and lifestyle rise during the Victorian period. The festival provides an opportunity for 21st-century visitors to look back in time and sneak a glimpse of this Victorian seaport.

Port Townsend was exposed to the Victorian Era (1837–1901) when people from around the world brought with them the refined styles and English

culture developing at the end of the 19th century. In the 1840s there were two kinds of Europeans in the Oregon Territory: those involved in the British Hudson Bay Company and American missionaries. During the 1846 Oregon Territory negotiations with Great Britain, President James Polk was determined to acquire the Straits of Juan de Fuca, Admiralty Inlet and Puget Sound "with their fine harbors" for the United States. In 1848 the United States took control over the Oregon Territory, including what we know today as Washington State. Through the Donation Land Claim Act of 1850, the United States encouraged settlers to homestead large parcels in the Oregon Territory of the Pacific Northwest.

Founded in 1851, Port Townsend was chosen as the port of entry to the Northwest by 1854. At this point, the town was expected to be the Key City and soon rose to be the largest city in the Washington territory. In 1858, the Port attracted droves of adventurers and speculators because of a gold rush in British Columbia. After the Civil War, the town grew rapidly as this major shipping layover port spawned a major maritime industry. Affluent citizens used this newfound wealth to build many Queen Anne-style homes into the 1890s that were built without the benefit of architects, relying instead on pattern books, the owner's sensibilities, and the skills of the carpenters.

Port Townsend was at the height of its prominence in 1886. Railroad speculation led to real estate speculation. The townspeople felt a railroad was imperative to connect their town to the rest of the nation, to secure political power, and to build a lucrative "Gateway to the Orient." In 1888, 1,000 vessels cleared customs in Port Townsend and an estimated \$4 million was spent here by masters of vessels and sailors.

The height of the building boom lasted from 1889 through 1892, with construction of City Hall, the new Customs Building & Post Office, the Jefferson County Courthouse, along with many grand commercial buildings on Water Street. The city boasted six banks, three street railways, a new electric company and skyrocketing property values as the population approached 5,000 residents. Prominent citizens were building handsome homes in Uptown, social clubs were forming, and fraternal orders such as the Masonic Lodge and the Order of Red Men, reflected the philanthropy of its class. But as history would have it, this city of dreams had a change of fortune by the end of the 19th century.

To learn more about the Port Townsend Victorian Heritage Festival, call Tracy or me at 360.344.8434 or visit [porttownsendvictorianfestival.org/](http://porttownsendvictorianfestival.org/). ♦



## WSU Seed Library Events for 2020

- **Seed Swap:** Saturday, February 1, 10 a.m.–3 p.m., WSU Classroom, 97 Oak Bay Rd.
- **Seed Library:** opens Monday, March 2, with new hours:
  - ✿ Monday through Wednesday, 10 a.m.–2:30 p.m.
  - ✿ WSU Office, 121 Oak Bay Rd.
- **Seed Library on JC Library Book Mobile:** the last full week of every month March–September
- **Garden Planning & Seed Saving Lectures:**
  - ✿ Thursday, February 6, 7–8:30 p.m. at Port Townsend Library
  - ✿ Wednesday, March 11, 6–7:30 p.m. at Jefferson County Library
  - ✿ Wednesday, March 18, 6:30–8 p.m. at Quilcene



## Furniture for Sale

Three-Piece Italia Leather set, no rips or tears.



If interested,  
call Tom or Patti Biazzo  
360-385-3262



# Neighborhood Classified Ads

Neighborhood Classified Ads cost only ten cents per word. Please pay at the Kala Point office when you submit your ad.

## WANTED: RENTAL

Retired attorneys from Seattle would like to rent a house or condo in Kala Point for the months of July & August. Prefer king (or at least a queen bed). Non-smokers, no pets, and will have no visitors during that time. We've owned unit 21D in the timeshare village since it was built. Please respond by email to [Lfinegold77@icloud.com](mailto:Lfinegold77@icloud.com) or [SharonFinegold77@gmail.com](mailto:SharonFinegold77@gmail.com)

## Commercial Advertisers

When you patronize one of our advertisers, please tell them you saw their ad in the *Kala Pointer*. We want them to know their advertising dollars are well spent. If you're satisfied, please tell your friends and neighbors. If you're not satisfied, please tell the advertiser.

**Patios • Decks • Sheds • Garages • More**



**Chad Woodley • (360) 301-6077**

"No job is too small... give us a call!"  
[CEWconstruction17@gmail.com](mailto:CEWconstruction17@gmail.com)



References Available

**AL'S CARPET CLEANING**  
360.385.1117

Expert Carpet Cleaning at its Best!

**Benny & Sue Short**



**TOWNSEND GUTTER CLEANING**  
360 . 316 . 6561  
Robert Barber

# Quality & Service at Competitive Prices

Tile, Carpet, Hardwood, Bamboo Flooring,  
Financing Available O.A.C.

*We have Furniture, Mattresses, Recliners & more!*



## PENINSULA FLOORS & FURNISHINGS

2405 West Sims Way • Port Townsend  
360-385-0945



# Jefferson Healthcare

[JeffersonHealthcare.org](http://JeffersonHealthcare.org)

Wellness Center  
1230 W. Sims Way  
Port Townsend

**Low Impact Fitness** | Combines gentle movement, stretching, strengthening and balance. Suitable for anyone able to move independently. Try your first class for FREE.

**WHEN** 8:00 to 9:00 am, Monday through Thursday, OR

**WHEN** 3:00 to 4:00 pm, Tuesday, Thursday & Friday

**DROP IN** \$5 per class; purchase punch card at 834 Sheridan, Waterside

**Work It, Circuit!** | Interval training, cardio, weights, bands, core and more. 8-week class.

**WHEN** 1:00 to 2:00 pm, Monday & Wednesday; starts 2/24/2020

**REGISTER** \$160 for 16 one-hour classes



## ENROLL TODAY: 360.385.2200 extension 1223

**PROSSER PAINTING & CONSTRUCTION**

**360-710-6138**



**Glenn\_prosser@hotmail.com**

**Www.ProsserDesignBuild.com**

PROSSPC895NR



**R&M Services**  
Handyman

**James Kenoyer**  
Owner

**360-301-2683**

430 Montgomery Ln.  
Port Ludlow, WA. 98365

randmservicesrm@gmail.com  
Lic. # RMSERS\*835B3/ Insured and Bonded

**R&M Services:**  
I install garbage disposals, faucets, interior light fixtures, etc. I also restring window-blinds.

**Prime Office Space Available**

At the entrance to Kala Point

**Kala Point Professional Building**

Contact: Geoff at 360-621-7419  
260kppb@gmail.com

**24-HOUR EMERGENCY SERVICE**



**Good Man Sanitation**

- Septic Pumping & Inspection
- Electronic Tank Locator
- Video Inspection
- Bonded & Insured
- Certified Maintenance & Monitoring

**360.385.7155**  
**360.457.4121**  
800.743.2515

**PORTABLE RESTROOM RENTALS**  
Delivered & Serviced  
Special Events • Construction • Farms

**www.goodmansanitationinc.com**  
*Locally owned and serving the Olympic Peninsula since 1954*

**FOX'S Blinds, Shades, etc.**

*Our prices are lower than the warehouse & club stores!*

**For custom products our prices can't be beat!  
Over 35 years' experience.**

For a free in-home consultation, call  
**360-379-2548**

Contractor's License #FOXDRD\*959CQ

**Winspear Construction Services LLC**

- **General Contractor - Small and Medium Projects**
- **Painting and Deck Refinishing & Repair**
  - Interior Hardwood Installation, Repair and Refinishing, including Stairs
- **Carpentry, Pressure Washing and more...**
- **Free Estimates - Licensed, Insured and Bonded**

**Contact David at 360-797-5254**  
**dawinspear@gmail.com**  
**Contractor #WINSPCS830LB**





## Kala Pointer Newsletter

Kala Point Owners Association  
1760 Kala Point Drive  
Port Townsend, WA 98368

### Remember:

### Hang Those Parking Tags!

Please provide your visiting family, friends, and guests with 2020 Kala Point Hang Tags all year long.

### KPOA Facility Hours

#### Administration Office

Monday–Thursday: 8:30 a.m.–2:30 p.m.

Friday: 8:30 a.m.–1 p.m.

#### Clubhouse

Monday–Friday: 9 a.m.–8 p.m.

Saturday–Sunday: 10 a.m.–8 p.m.

#### Pool

Closed

#### Jacuzzi and Sauna

Monday–Friday: 9 a.m.–7:45 p.m.

Saturday–Sunday: 10 a.m.–7:45 p.m.

## Cleaning house?

Your donation of gently used furniture, appliances, and household goods helps a local family build a strong foundation for the future.



**FREE donation pickups**  
**360-385-9653**



 **Store**  
Habitat for Humanity  
of East Jefferson County