



Kala Pointer

The *Kala Pointer* is a Monthly Publication of the Kala Point Owners Association

June 2020

President's Message

Joe Englander

I want to start by thanking our loyal staff who have stuck with us and cared for Kala Point, frequently unnoticed, during this difficult and even dangerous period. Keith, Shane, Daniella, Felice and Phil—on behalf of all of Kala Point, thank you.

Kala Point and its members are obligated to follow federal, state, and county laws and ordinances which supersede our own governing documents. For many, this seems obvious. Yet, these outside authorities have raised issues for some of our members in two ways: one is the “lock-down” of our recreational facilities by the Governor and the County Health Officer as a result of the pandemic and the other is a State Law (Revised Code of Washington or RCW) regarding how we must count votes when ratifying our annual budget.

When are we going to be able to use the sports courts, clubhouse and pool? We don't yet know how the Stay-at-Home orders will be modified in the coming weeks. The County has plans, so to be ready, we make plans in response. As Phase Two is implemented, outdoor recreation will be re-opened for family players and possibly a limited number of other participants. With that in mind, we are preparing by cleaning and resurfacing the sports courts. The Clubhouse, during Phase Two, will probably be limited to groups of five non-family members which will severely restrict its utility for most meetings. Considering the age-profile of most Kala Pointers, gatherings are unlikely to be in your best interest.

Use of the pool and sauna are unlikely to be permitted until Phase Three, or maybe Phase Four. This depends on the State and County and getting appropriate health inspections. Social distancing in our small locker rooms

Continued on page 3

In This Issue

May Board Meeting.....	2
Favorite Peninsula Places	4
Seeking New KPOA CFO.....	4
Calendar of Events	5
Financial First Aid Kit.....	6
Letters to the Editor	7-8
Kala Lily's Gardening Tips.....	9
Through the Lens	10-11
Grounds Committee Info	12
Pickleball & Tennis Return ...	13
Our Red Alders	14
Board Candidates.....	15-18
The Art That We Do	19
Committee Reports	20-21
Know Your Neighbors	22-23

Don't forget!
Meet the Candidates
Thursday, June 18,
6:30 p.m., online.
See pages 15 – 18

June *Kala Pointer* Staff

Editor: Mike Burk
Copy Editors: Hilary Newell,
Suzanne Eggleston
Chair: Suzanne Eggleston
Secretary: Hilary Newell
Advertising: Gail White
Masthead Photo: Mike Burk

June Contributors

Marilyn Berry	Angela George	Sue Stanton
Mike Burk	Caroline McNulty	Pamela Thompson
Donna Colwell	Dale Moses	Kim Titus
Suzanne Eggleston	Marlene Newman	Leslie Weertman
Anne Englander	John Oliveira	Joe Worrell
Joe Englander	Char Quandt	Phyllis Wurscher
Jackie Fischer	Bob Segui	Diana Zinn
	Diane Solvik	

July Newsletter Deadline

Deadline for July 2020 issue of the *Kala Pointer* is June 19.

Submit your articles to:

YourKalaPointer@kalapoint.org

Our *Letter to the Editor* policy can be found at

KalaPoint.org

2019–2020 Board of Directors

[Click a name to email](#)

President [Joe Englander](#)

Vice President [Kim Titus](#)

Secretary [Dale Moses](#)

CFO [John Oliveira](#)

Director [Jean Erreca](#)

Director [Tom Gillespie](#)

Director [Dan Kimball](#)

Director [Steve Reed](#)

Director [Scott Rovanpera](#)

[Click here to email the entire board](#)

2019–2020 Committee Chairs

Architectural: [Caroline McNulty](#)

BMAC: [TBA](#)

Elections: [Mike Burk](#)

Emergency Preparedness (EPC):

[Anne Englander](#), [Tim Twiford](#)

Finance: [John Oliveira](#)

Grounds: [Steve Reed](#)

Internal Controls: [David Harrah](#)

Personnel: [Joe Englander](#)

Publications: [Suzanne Eggleston](#)

Social Plus:

[Char Quandt](#), [Diana Zinn](#), [Patti Biazzo](#)

Tree: [Mark Kleinman](#)

What Happened at the May 2020 Board Meeting?

[Dale Moses, KPOA Board Secretary](#)

Your KPOA Board of Directors again met by telephone conference call at 1 p.m. on Tuesday, May 12, 2020, due to the coronavirus pandemic. All nine Board members were online and there were approximately a dozen audience members who spoke up to say they were present. There were also another 10 or so listeners who didn't speak up (the conference software counts total callers!). This form of meeting was not without small glitches as people muted and unmuted their phones as well as occasional members speaking as they joined the call! Board meeting documents were available prior to the meeting on the KPOA website (under the *Members* pull-down menu, then select *Board Meeting Files*). Items from this Board meeting:

- There were several inputs from the audience at the beginning of this meeting to discuss the coming CC&R resolution on budget voting (ballots will be mailed June 15). See the details later in this column.
- There were six correspondence items that came to the Board this past month most concerning COVID-19 actions within Kala Point.
- The General Manager reviewed recent activities, financial status, and collections.
- The GM also proposed that the swimming pool not open for the rest of this year because of the high costs both for frequent sanitizing as well as hiring more staff to supervise compliance with virus requirements. The Board voted against this long-term idea preferring to go month by month until the County pandemic guidance becomes clearer. We really want to open the clubhouse, pool, hot tub, and sauna as soon as we can do it safely but may not be able to do so easily. We also discussed options for the floats going back in the water since we missed the window for ideal re-installation.
- The need continues for a replacement CFO as John Oliveira departs the Board in July.
- Committee reports were presented including the ad hoc committee on pets. No specific recommendations yet from the committee as it needs to do more research and gather input. Some committees have been able to meet remotely to keep social distancing.

[Continued on page 3](#)

The Kala Point community is a common-interest residential homeowner association (HOA). When purchasing or building within Kala Point, homeowners agree to follow the HOA's governing documents, which include: Conditions, Covenants and Restrictions of Record (CC&Rs); Rules and Regulations; Bylaws; and detailed Administrative Policies and Procedures (APPs). APPs are Board-enacted rules. The protective umbrella of these governing documents works in the best interest of all homeowners ensuring higher standards of neighborhood appearance and enhancing the collective value of the homes.

Board Meeting, Continued from page 2

- Inputs from members before adjourning included a long discussion reacting to some of the member opening comments on the CC&R resolution coming to a vote in July. We know KPOA must comply with the Washington State RCWs and it makes sense to have the CC&Rs reflect this, but there may be some interest in further restricting budget increases.

We adjourned at 3:05 p.m.

If you would like to learn more about this Board meeting, feel free to listen to the recording of the meeting (available from the office) or **send an email to the Board** on a specific topic. ♦

Meet the Candidates!

Thursday, June 18

Online at 6:30 p.m. (details to follow)

We have four candidates running for three Board of Directors' positions.

Learn about each of them so you can make an informed decision when you vote.

Meet our candidates on pages 15-18

Covid-19 Resources

- **Need information?** Our Kala Point website kalapoint.org and EPC website epc.kalapoint.org contain feature articles and links to authoritative coronavirus information from national, state, county, and local sources.
- **Need help?** If you are ill or at high risk and need assistance, please reach out to your block captain.* The Emergency Preparedness Committee (EPC) is coordinating volunteers to check on neighbors and pickup/deliver food and necessary supplies.

- **Hotline:** Jefferson Healthcare Nurse Consult: 360-344-3094, every day, 8 a.m. to 5 p.m.

*Don't know your block captain? Log-in to kalapoint.org and click EPC on the top-menu for the list, or contact [Anne Englander](mailto:AnneEnglander@kalapoint.org) at 360 316-9339. ♦

President's Message, Continued from page 1

is going to be a limiting factor especially since state regulations already require showering before entering the pool. New behaviors, new procedures, and possibly new construction are going to be needed so that health and safety remain a priority.

In the coming weeks, you'll receive your voting packet to choose among four candidates for three Board seats, and to accept using IRS Ruling 70-604 to use unexpended assessments to lower the following year's assessments. There was a resolution to place on the ballot a change to our Covenants, Conditions and Restrictions of Record (CC&Rs) to harmonize with State Law. Functionally and legally, we have to comply with the RCW whether we change the CC&Rs or not, so at a Special Board Meeting on Tuesday, May 16, the Directors voted unanimously to rescind that resolution and therefore nothing regarding it will appear on the ballot. The Board will make a special effort in the next budget cycle to remind members how votes will be tallied.

With four candidates for three seats on the Board, you'll have the opportunity to make a choice. You'll have a chance to meet the candidates in your own home by video conference on June 18 at 6:30 p.m. Instructions for participation will be emailed and posted at mail stations. And on the topic of video conferencing, we are in the process of implementing a system that will allow you to use any internet-connected device or even a phone to participate in meetings from home. So it will be easier than ever to attend any committee or Board or Annual meeting; you won't even need to leave home.

One very important unelected position that needs to be filled by this July is Chief Financial Officer (CFO) for KPOA. Familiarity with accounting and general administration are key assets. If you can help, please contact John Oliveira at cfo_oliveira@kalapoint.org.

Finally, please do all you can to maintain social distancing for a while longer. Keep others safe by keeping yourself safe. Keep your distance, use face masks, don't be a vector be a victor! ♦

As I watch this generation try to rewrite history, one thing I'm sure of... it will be misspelled and have no punctuation.

A Letter From KPOA's CFO

I have served as your Chief Financial Officer for eight years. After the end of this board term in July, I will not make myself available for re-election by the Board of Directors. A suggestion was made that I put together a "job description" for the position of Chief Financial Officer. The job description is well documented on page 12 of **APP II-5**, a couple of places in the **Bylaws** and **APP VII, Finance Committee**. If you are interested, you should read and understand these documents, but don't let them scare you off. It is not really that complicated.

It might be more useful to provide prospective candidates with a brief description of how I spend my time as CFO. As the Chair of the Finance Committee, you would conduct the monthly meeting. Generally, our meetings last about an hour, with a couple of hours spent in preparation.

On a weekly basis, the CFO reviews all expenditures as part of the check-signing process. While any of our four officers are approved as check signers, more than 90 percent of checks are signed by the CFO.

You will also supervise the preparation of the annual budget for presentation to the Board of Directors. The CFO attends all Board Meetings but need not be an elected member of the Board. The CFO prepares a letter to the membership annually reporting on the financial state of KPOA as well as a letter summarizing the budget proposed for the coming year.

So, what kind of skills and experience do I think are most valuable for a CFO? General management experience in business or government is key. A logical, structured, decision-making process that is data driven is of great value. The CFO, like any of our officers, should be computer literate; an understanding of software tools like Excel is essential. You should know your way around a balance sheet, as well as income and expense statements. You should be willing to question and challenge policies and procedures that have financial implications.

Most importantly, I believe that a CFO has a duty to keep assessments as low as possible while maintaining the quality of our amenities and our members' property values. If you are interested or would like to discuss this further, please feel free to give me a call. ♦

John Oliveira

KPOA Chief Financial Officer
360.774.0439



What Is Your Favorite Place on the Olympic Peninsula?

At some point, things will get back to normal (whatever that will mean.) What place(s) on the peninsula will you look forward to visiting?

If you have a favorite place on the peninsula, please share it with us.

There are no wrong answers!

Email your favorites to:

yourkalapointer@kalapoint.org, we'll feature them in a future issue. Thank you! ♦

Caution – Danger!

The Architectural Committee has been busy approving several new homes under construction in Kala Point. Contractors have brought to the committee's attention that there are individuals entering properties without permission. The committee needs to remind members that these sites are on private property, and while under construction there is risk involved when moving about a construction zone. Please, please do not enter the property without the accompaniment of a contractor or owner. No one wants you injured and the contractors do not want added liability.

Thank you,
Architectural Committee

Calendar of Events *Pamela Thompson*

Due to the statewide COVID-19 shutdown, most public events have been canceled or are in “to be determined” status. There are, however, a few “virtual” classes being offered from various venues in Port Townsend, and locally.

June 1

Yoga Flow with Anya via Finnriver’s InCider Space. Join a virtual Hatha yoga class and experience the balance of creative movement with the need to quiet the mind, and the qualities of embodiment and meditation in the practice. **TIME:** 5–6 p.m. **COST:** Donations from \$5–\$100 are requested to access all online events sponsored by Finnriver. **LOCATION:** Donate and sign up to be an InCider member for the month and receive event links and passwords. farmwarestore.finnriver.com/ **CONTACT:** Laura Tucker at 360.379.4491 or Anya Callahan at anya.callahan@gmail.com.

June 6, 19

Inner Excavation: Personal Expression with Donna Watson — Live Stream Online. This three-week workshop (May 30 was the first class) is for all types of artists, whether they work representational, abstract or non-objective. It is also for all types of mediums, including watercolor, acrylic, gouache, encaustic, oil, collage or mixed media as well as 3-D art. The emphasis is on searching for inner voice, a unique style, and personal content. The workshop is offered through Zoom; after registration, you will receive log-in information and other details via email. (You will need to download the free Zoom application at Zoom.us prior to the class.) **TIME:** 10:30 a.m.–12 p.m. **COST:** \$90; purchase [online](#). **LOCATION:** Port Townsend School of Arts (via Zoom). **CONTACT:** info@ptarts.org, ptschoolofthearts.org/

June 6

The Food Co-op Online Cooking School. The Food Co-op, in collaboration with rouxbe.com, is offering its members online cooking education available anytime, anywhere with access to world-class chef educators as an added benefit. This is not your average YouTube cooking video — it is school, complete with assignments, quizzes and homework.

Bonus? You get to eat the result. **TIME:** On demand. **COST:** Free to members. **LOCATION:** [foodcoop.rouxbe.com/](http://foodcoop.rouxbe.com) **CONTACT:** Questions about the cooking school, including account setup, system requirements, or the cooking school content, can be addressed at foodcoop.rouxbe.com/

June 8

Weekly COVID-19 Update. Dr. Tom Locke, Public Health Officer for Jefferson County, provides live-streamed COVID-19 updates. Updates are also recorded for online viewing on demand anytime thereafter. To see live or recorded videos of the Board of County Commissioners meeting, go to www.co.jefferson.wa.us and click on “Videos of Meetings” at the top of the “Quick Links” menu on the left. Choose “Streaming Live” or “Recorded.” You can also tune in to KPTZ at 91.9 FM to hear Dr. Locke report to the County Commissioners on Monday mornings at 9:45 a.m. **TIME:** 9:45–10:15 a.m. **COST:** Free. **LOCATION:** jefferson.wa.us/ **CONTACT:** info@jeffersoncountypublichealth.org, 360.385.9400

June 18

Kala Point “Meet the Candidates” Event [see page 3](#)

June 21

Father’s Day

To learn more about events in our town, visit Pamela’s site at discoverporttownsend.com. ♦

Days of Note in June from holidayinsights.com.

June 4

Hug Your Cat Day

June 6

D-Day

June 13

National Weed Your Garden Day

June 20

Summer Solstice

June 22

National Onion Ring Day

June 26

Forgiveness Day

June 28

International Body Piercing Day

June 29

Camera Day ♦

Need a Stay-at-Home Project? Build Your Financial First Aid Kit

During “The Great Pause” you’ve already accomplished a lot of things around the house that you’d been putting off — cleaning the closets, painting a room, organizing your photos, or even alphabetizing your spices. Now what?



You already have a medical first aid kit at the ready in case it’s needed — what about using a rainy day or two during this stay-at-home time to create a financial first aid kit? Now’s a good time to organize your financial records and pull together copies of your important documents so they’re readily accessible in an emergency.

What records would you need to have immediately at your disposal? And how should you store copies of your documents? Here are suggestions from a website on emergency preparedness, created by Silicon Valley tech entrepreneurs, aptly called The Prepared theprepared.com:

Important documentation should be stored both digitally and physically: a USB thumb drive in your bug-out bag, laminated papers securely stored in a watertight container. That should cover all of your bases when combined with files stored in the cloud and on your phone.

Documents to keep copies of in your emergency kit:

- A list of important people and their contact/location information
- Birth certificate
- SSN card
- Passport
- State ID
- List of financial accounts and credit card numbers — don’t forget the expiration and CVV codes as well as the phone numbers for your providers
- Titles/deeds

- Marriage certificate, especially if you have different last names
- Anything proving parental relationships, especially if adopted or different last names
- Pictures of important people, both for morale and to give to others for recovery/reconnection
- Estate planning documents
- Health, homeowners, auto, life, and other major insurance policy numbers and phone numbers
- Important medical history, medications (with dosage), and allergies
- Living will or Do Not Resuscitate instructions

While you’re at it, add photos of your pets and copies of their records (medical conditions, vaccinations, special needs). And consider taking pictures of everything in and around your home: furniture, artwork, equipment and appliances in each room; the content of all closets and dressers; what’s stored in your garage; and the exterior of your house or condo. If you can, digitize all these documents and photos, and store them on a password-protected USB thumb/flash drive in your go-bag or on your key chain.

So that’s a start for a rainy-day project. You’ll find a comprehensive step-by-step guide and checklist in FEMA’s “Emergency Financial First Aid Kit” booklet, which you can download at www.fema.gov/. A free printed copy is available from FEMA; call (800) 480-2520 and ask for publication number P-1075. ♦

Kala Cares In Memoriam

George Thomsen

Letters to the Editor

Dear Kala Point Members

I want to RAVE and RANT. First the rave. I volunteer to occasionally work on the gardens at the Kala Point front gate and clubhouse. I weed, prune, plant, and water. I do it because I love to garden. More importantly I like our entry looking inviting and pleasant. Sometimes the weather makes it a challenge, the occasional deer tasting does too. The longer term residents might remember how unappealing it was in previous years. Our General Manager took the initiative to redesign and have our maintenance workers build retaining walls and plan for nicer plantings. It is really nice of the many people, residents or not, who slow down and proceed through the area with caution. Some of you smile, wave and yell out a greeting. Thank you. I don't expect praise or acknowledgment, but it is neighborly of you to do so.



Now the rant. There is a speed limit sign saying 5 mph and a speed bump to go over. Why do you need to drive 40 mph or even 30 when you see a person there? It is unsettling to know you are rude and careless. I try to do most work on the weekend now because the closed gate slows you down somewhat. Does the extra minute it takes you to proceed slowly in or out really make that much difference to where you are going? What if it was someone in your family working there who is put at risk because you are careless? Some may say it's not the members but outside workers. I cannot attest to all, but most are members since car tags and stickers are a giveaway. I have encountered the friendliest guys driving great big rigs – smiling and saying how nice it looks. So many of you residents have to acknowledge that you are the careless ones.

This Covid-19 virus has us all feeling a bit caged and restless. It would be nice to think that we have

learned from this unfortunate event that it's the people that matter, how we treat each other and look out for each other. How fast we get in or out of the Kala Point entry is not what matters. So wherever you are going out to or coming in from – I hope you are treated as nicely as I would like to be. Thank you.

Caroline McNulty ♦

Cassandra Cache

Just had a thought in light of the COVID-19 situation. In talking with my neighbors, it seems that most of us are stocked up more than we have ever been on food, water and the basics and are likely to stay that way given this lesson learned.

Perhaps a voluntary Cassandra Cache for those residents who do not have the space or the desire to create their own cache would be an option that they could buy in to and use. A food stash for the whole community is not really necessary and might be seen as a target – a hoarding attempt by those people behind the locked gates.

Maybe we should concentrate on what Kala Pointers have been so good at in the past: supporting the whole Port Townsend community. We give generously to the food bank, toys at Christmas, the Jefferson County Fire Department and so many other worthy causes. Earthquakes are a problem for all our neighbors and I'm sure we're coordinating with the city and the county in this effort. Collecting/stashing food and water behind our gates just doesn't strike me as the best we can do.

The medical supplies and expertise is a whole other important issue.

I applaud the *Kala Pointer* for adding good information about our governing documents and also feel it's a good vehicle for continuing education about emergency preparedness. We can thank the EPC for all the work they have done in the past because I, for one, am much better prepared now and in the future for all manner of disasters.

Marlene Newman ♦

Good Job!

Just want to say while learning my way around the KPOA website I found the *Kala Pointer*. Just want to say how much I enjoyed it. The people who put this together do an outstanding job.

Peace,
Jackie Fischer ♦

Letters to the Editor

The Budget Vote

Most of us recall the confusion over the budget vote (see January *Kala Pointer* message from our President); please be aware of the actions taken since.

During meetings after the budget vote, the subject of updating our CC&Rs to align with RCW called the language CC&R Article VI Section 3 into question. While most understood that change to be a mere amendment to the required number of assenting votes for the budget to fail, the Board took it further.

At the April 2020 BOD meeting, a motion was made and passed to harmonize CC&R with RCWs for the Membership to vote at the annual meeting that removes all references of our assessment (dues) NOT to exceed 115% of previous year from the CC&R. (See p.4 of below link)

https://www.kalapoint.org/wp-content/uploads/2020/05/5_18_20_Approved-Board-Minutes_w_attendees.pdf

I was shocked. I listened to the April meeting and could not believe the same board who had stated they were “very aware of the sentiment of those who voted against the budget...” intended to remove the only language in our CC&Rs that protects the membership from extensive increases.

A group of neighbors got together to review how the RCWs, and the recently enacted WUCIOA Washington Uniform Common Interest Ownership Act (that governs HOA’s formed AFTER July 2018) applies to KPOA. We found that a Bill is currently sitting with the Washington State Civil Rights and Judiciary Committee that repeals the section of WUCIOA that applies to existing HOAs as being unconstitutional.

At the May meeting this information was shared, letters were submitted to the *Kala Pointer*, and BOD scheduled a meeting.

The result: our BOD voted to rescind the motion from April. It was decided that until Washington state makes a determination on this bill, no changes to our CC&Rs regarding assessments need to occur.

A suggestion from the floor for our board and members to use this time to help push the bill (HB1636) forward.

I was pleased that our board took the time to listen to members, read our comments, and do the further research needed to get it right.

Thank You!

Respectfully submitted, *Donna Colwell* ♦

Kala Point Yard Sale

*Diana Zinn,
Co Chair Social Plus*

It has been decided to cancel this year’s Annual Kala Point Yard Sale. We are sorry to have to do this, but we want to do everything to keep our folks safe here in Port Townsend and Kala Point. We hope to resume in June of 2021.



Send In Your Photos!

Do you have images that showcase the character of Kala Point?

New images that highlight the natural setting, facilities and people of Kala Point are needed for the KPOA website (kalapoint.org).

You won’t be compensated for your submission, but you will receive a photo credit.

Please submit your original full-resolution photos in jpeg format to photos@kalapoint.org.

(Please send one photo at a time to avoid going over email size limits.) Thank you! ♦

Kala Lily's

June Gardening Tips

Diane Solvik & Angela George

Rhododendrons, azalea, lilac – what a splendiferous month May was in our gardens! If there is a silver lining to the corona cloud, it's that, faced with staying home, many of us have turned our creative juices toward beautifying our yards. Nurseries have been open and full of tempting offerings.

June is now upon us – “busting out all over.” The summer solstice is just a couple of weeks away. The longer days of sunshine encourage plants to continue growing, although at a slower pace than in the spring. This is not yet the time, however, to sit back and admire your garden. There are still things to do.



The summer dry season has begun, with little likelihood for soaking rains until late September or even October. The skies may turn gray and threaten to burst open but that rarely happens in this neck of the woods. All we get is a light drizzle that dampens the earth but does not reach the roots. It's important to check your irrigation system and soaker hoses at this time. Water deeply and slowly every other day to encourage root growth.

If your yard includes a water garden or pond, make sure it is cleaned out to avoid it becoming clogged with growth. Water plants grow quickly in the warm summer months. Our feathered friends will appreciate a nice clean bird bath with fresh water. Encourage them to visit your garden where they will eat many garden insects that can harm your plants.

Be on the lookout for the dreaded Scotch Broom.

We certainly don't want this invasive, noxious weed in Kala Point. It competes with, and often replaces, native species so must be removed whenever you see it.



Evergreens can be pruned at this time. The new growth is called a “candle” and can be pinched off or cut back by half to encourage bushier plants. Do not cut into the hardened wood of conifers as most cannot regenerate new growth from that area.

Now is a good time to freshen up your containers and hanging baskets. Spring flowers have faded and can be replaced with colorful summer-blooming varieties such as petunias, lantana, million bells or geraniums in sunny spots. For shadier locations use fuchsia, begonias, or purple bell vine. Include attractive foliage plants such as coleus or fountain grass. The sky's the limit so let your imagination soar. Another fun idea is a bowl of mixed sedums, adds beauty and texture to your display.



Keep an eye out for aphids which multiply quickly in warmer weather and will feast on your plants. The minute you notice these nasty little pests, knock them down with a cold blast of water from your hose. If they persist, make up a batch of non-toxic insecticidal soap, using dish detergent and water, and spray the infected plant.

It's a lovely month to sit outside with a glass of your favorite beverage and admire your creations in the garden.

Happy sitting! ♦

Through The Lens



On a walk in the state park • Angela George



Orcas, just off Kala Point • Hilary Newell



New fawns • Joe Englander



Nevada Desert • Bob Segui



Hummer • Angela George

**Share Your Photos With Kala Point
and the *Kala Pointer*!**
photos@kalapoint.org

Through The Lens



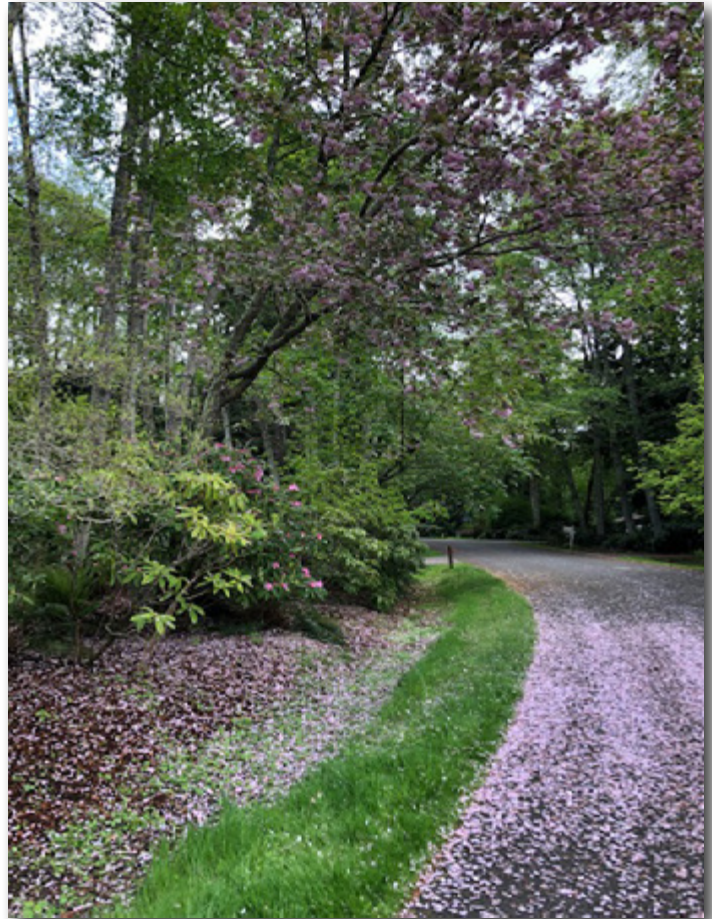
San Simeon church • Bob Segui



Spring flowers • Joe Englander



Idaho Potato Museum (really), Blackfoot, Idaho • Mike Burk



Blossom shower • Angela George



Eastern Oregon sky • Mike Burk

Committee Members Needed

The Kala Point Architectural Committee could use several members. We train and only have a few requirements. You should be able to support the already established exterior rules for homes and properties. The committee reviews requests for new homes (exterior components only), pet enclosure or garden enclosures, garden shed or firewood structures, changes in paint colors or roofing, etc. We meet once per month, occasionally we have to do site visits, but generally complete our meeting between 90 minutes and two hours. Each member takes on a project to manage and follow until completion. We make decisions as a group following the established written rules, and the project manager does monthly reporting. Changes or problems are brought back to the committee for guidance. It takes about a year to feel you can answer most questions so it is beneficial to make at least a two-year commitment.

The Architectural Committee is essential to the overall look and feel of the Kala Point community. The original developers took great pride in establishing standards that are known to benefit property values and desirability. Call or email the Chair, Caroline McNulty, or other members if you want to ask questions. You are also invited to attend several meetings and observe before you make a commitment. Give it some thought; we'd love to have fresh faces. COVID-19 is giving us some challenges but we can do it!

Caroline McNulty or 360-379-6818 ♦

KPOA Facilities

**All our facilities
are closed
until further notice.**

**The Administration
Office is available by
phone only
at 360.385.0814.**

**Stay tuned for
our reopening.**

It's like being 16 again.

Gas is cheap
and I'm grounded.

Grounds Committee Current Agenda

Leslie Weertman

The recently created Grounds Committee Sign Policy (**APP VIII-4**) laid out detailed specifications for the design, message, and placement of permanent signs within the Common Areas of Kala Point. The current towing and no parking signage non-compliance is a current topic for the committee and we anticipate there will be an improvement of the sign appearance in the future. As a reminder, a vehicle parked at the beach, sport courts or a Fort Townsend State Park trailhead could be towed (unless it is for a scheduled registered event) without a proper Kala Point parking tag or windshield sticker. A vehicle parked on a private lot or in a KPOA storage lot is not required to display a KPOA pass or sticker.

The Grounds Committee also has jurisdiction of pet regulations. The Responsible Dog Owners Ad Hoc Committee is formulating a plan to revise **Rules & Regulations Chapter II**, Section C "Pets" to conform with current Jefferson County dog ordinances; conduct an educational outreach program to our residents regarding responsibilities of walking your dog – leashed and unleashed – within the Common Area; and update the signage at the beach area that explains the KPOA policy on control of your dog.

Join the newly reformed Grounds Committee.

This committee has the responsibility to establish and monitor the KPOA standards of aesthetics, safety, and maintenance for all Common Areas and the "care and appearance" of individually owned properties. Community input is critical to this committee. Have a voice by joining the committee.

Grounds Committee Trivia

Did you know the **APP VIII-3** allows the posting of a political yard sign that is under four square feet in size and placed at no more than 42 inches above the ground? This is allowed for 60 days prior to a specific election but then it must be removed within 72 hours following the election. ♦

Welcome Back Everyone!

We know it's been a long time coming and thank goodness we are all virus free! Pickleball at Kala Point resumed in May, but there are some required changes to help us all stay safe and healthy during the COVID-19 Phase II restrictions.

Included here are guidelines for reopening pickleball play at Kala Point. We want you all to know we have missed playing as much as you have, but we want to make sure that we ease back into this and adhere to our state's guidelines.

Please take it easy and don't overdue it. Some of those PB muscles may be out of shape. Play within small groups of KP residents for now (max five); no Open Play until further notice. Sign up on the Pickleball Calendar for two-hour time slots. If you don't or can't access the PB calendar, have a teammate add your name. The calendar is operating as it always has: first come, first PB serve. (PickleballKP@gmail.com, pwd: 2020-KPPBcalendar).

Any questions, contact one of our KPPB advisors:

Michael Machette, Char Quandt, Louise

Tragard, Doug Kurata ♦

Kala Point Pickleball Playing Guidelines During Phase 2

(Adopted according to Jefferson County and USAPA guidelines; Approved by Keith Larson, GM)

Effective May 26, 2020

1. Pickleball play is restricted to KP members only.
2. No Open Play – All play must be scheduled using the KPPC electronic calendar; maximum session time is two hours. (For guidance, contact one of the KPPC advisors. Each location is available for play as dictated by the PB calendar.)
3. Pickleball locations: The two court areas are at the Lagoon (3A & 3B) and the Sports Court on Pinecrest. Play can be concurrent on Courts 3A & 3B.
4. No more than five players are allowed per court at any time.
5. If five players are on one court, the non-player must maintain social distancing from others.
6. Bring your own hand sanitizer/wipes. Disinfect hands before touching storage box, balls etc. Disinfect hands and balls after play. (We will have backup sanitizer available in storage box but use only if you forget yours.)
7. A small number of numbered balls will be available at the courts. (They will be numbered so you can

identify the ball(s) you are playing with vs other court.) Sanitize one or two and use these for all play in the session. Sanitize and return club balls to the storage box after use.

8. You may bring your own pickleballs, please sanitize and mark them with your initials.
9. Use your paddle or foot to pick up and transfer balls that are not yours.
10. High-risk population is defined as anyone age 65 or older and anyone with underlying medical conditions. If you not comfortable with these guidelines, you should not play. If you do not feel well, do not play!
11. Use of face masks is encouraged (especially for shouters!) but not required.
12. Players should disperse at the end of the session and maintain social distancing.
13. Recognize that you "Play at your own risk!" ♦

Kala Point Tennis Court Usage During Phase 2

Players and Playing Time Limits

1. No more than five players allowed at any time.
2. Play is restricted to two-hour periods per court.
3. If the courts are occupied upon arrival, inquire as to when the players plan to vacate or check with the scheduling of play located at each tennis court, and return at that time.
4. Do not wait on the courts for players to vacate.
5. Do not play if you are not feeling well.

Reducing Risk

1. Bring your own hand disinfectant
2. Disinfect your hands:
 - Prior to touching the equipment, nets, and balls
 - After placing equipment back on storage racks
 - Keep six-foot distance while standing or sitting
 - Close door and secure locks; disinfect upon entry and exiting

Tennis Ball Usage

1. Bring your own balls and mark them with a magic marker to protect others
2. Only serve with your marked balls

High-Risk Population

Anyone age 65 or older and anyone with underlying medical conditions is advised not to play. Sorry, but this is the guideline. This restriction won't be lifted until we are in Phase 4.

Use of face masks is recommended, especially if playing is in close quarters. However, this is a personal choice since tennis is an outdoor activity in an open space at Kala Point. ♦



Red alders • Suzanne Eggleston

Why Does the Tree Committee Want Me to Keep My Alders?

Kim Titus

The Tree Committee considers alders a valuable tree in our forested environment. There are a few characteristics that cause some residents to believe their alders are unhealthy or unwelcome. These are: the alders are leaning, they are 40 years old, or they are messy. This is what we want you to know about alders.

General Characteristics

Alders are members of the birch family. Of the 10 species native to the United States, red alder is the most common and important of the hardwoods in the Pacific Northwest.

Mature red alder trees are typically 70 to 120 feet in height and 10 to 34 inches in diameter. Red alder is mature at 60 to 70 years, seldom surviving beyond 100 years. The range of red alder extends from southeastern Alaska to California, generally within 125 miles of the ocean. The greatest volume occurs in the Puget Sound and Northwest Oregon subregions.

Red alder is intolerant of shade, and it must maintain a dominant or codominant canopy position. In Kala Point, most alders can be found either in alder stands or, when in a mixed canopy, will grow towards the sun, resulting in a leaning appearance.

Undamaged red alder stands are fairly free of problems from insects and disease. Although red alder

has long been perceived as highly susceptible to decay, some recent work shows that healthy, living trees are exceptionally resistant to decay after typical stem injuries.

Provides Nitrogen to the Soil

Red alder is a pioneer species that establishes rapidly in openings created by forest disturbance like in newly bared soils after landslides, logging, construction or fire. Red alder maintains or improves soils via rapid input of organic matter and nitrogen. Its roots fix atmospheric nitrogen via symbiosis with the soil through beneficial bacteria. Red alder does not reproduce in the absence of soil disturbance.

Because of red alder's ability to improve soils via nitrogen fixation and addition of organic matter, there is particular interest in managing red alder with conifers in order to maintain or improve site productivity.

Deciduous

Alders shed both leaves and seeds, contributing to the organic matter on forest floors. The seeds come from the flowers which are in clumps of upright catkins. The seeds are small, very light and they can be carried long distances by the wind. Tree establishment from seeds generally requires open conditions and bare mineral soil. Red alder seedlings become established on organic soils only under very moist conditions.

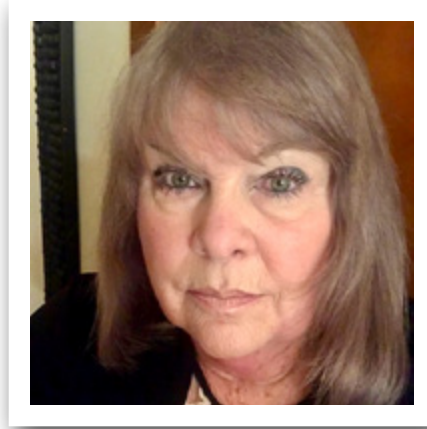
For wildlife, red alder provides an important deciduous component in the predominantly coniferous forests of the Northwest. Typically, vegetation under red alder is quite different from that of conifer-dominated areas. A variety of animals seem to prefer or depend on red alder for food or habitat. Maintenance of a red alder component can provide greater habitat diversity within or between conifer stands.

Summary

Because the number of houses being built within Kala Point has significantly slowed since the early development days, alders will not be regenerating naturally due to the lack of open soils. Therefore, our existing alders are the only native, nitrogen-fixing trees occurring in Kala Point. They provide an important component to the Kala Point forest for wildlife, soil productivity, and native diversity. In the opinion of the Tree Committee, and based on studies by foresters throughout the Northwest, keeping alders in this ecosystem improves our forest's health.

This information was originally published in *Hardwoods of the Pacific Northwest*, S.S. Niemiec, G.R. Ahrens, S. Willits, and D.E. Hibbs. 1995. Research Contribution 8. Oregon State University, Forest Research Laboratory ♦

KPOA Board of Directors Candidate



Pat Miles

274 Cedarview Drive

Prior to moving to KP in 2005 with my husband and golden retriever, I enjoyed a 32-year federal career, the last 17 as a senior analyst and program policy manager with the Office of the Secretary of Defense in the Pentagon. Having always chosen to live in HOAs, experience has shown me that our governing documents are flexible and reasonable – they afford a beautiful, enviable living environment, provide great value for our annual assessment, but most significantly, preserve our homes' values.

What specific attributes and qualifications do you have that would augment the Board's effectiveness?

In the past 15 years, I have served on several KP committees as well as an elected Board Director and am currently on the Architectural Committee. My familiarity with other HOAs and my KPOA volunteer experiences will contribute historical perspective and knowledge to Board discussions and decisions.

What community issues in Kala Point are you most interested in addressing as a Board member?

I see greater enforcement of our governing documents as paramount to protect the look and desirability of our private community. Seeking ways to better inform the membership will reduce the need for enforcement.

What is your understanding of principal responsibilities of the KPOA Board?

I believe that an HOA Board priority is to uphold the CC&Rs and attendant documents and refrain from functioning like a political entity with polar positions or special interests. It should consider changes to the

governing documents only when they demonstrate a clear benefit and are in the community's best interest as a whole – not to satisfy a minority special interest.

Are there areas in our CC&Rs or other governing documents that need to be modified? If so, what are these areas and what are your suggested changes?

Our CC&Rs are the bedrock of Kala Point's character and changes should be rare and judicious, so as to not undermine the very nature of the community. Modifications to our supporting, detailed governing documents – Rules and Regulations or Administrative Policies and Procedures – may be made to update, allow for new technologies, or consider majority membership interest. Our volunteer Board and committees are constantly changing. To help our volunteer staff provide consistent application of the rules and regulations and APPs over time, it is vital that changes are made with a view toward the supporting the basic principles of the founding CC&Rs. ♦

KPOA Board of Directors Candidate



Sean Moss

191 Foxfield Drive

I'd like to begin by expressing my deep gratitude towards the entire Kala Point community for your hospitality and welcoming spirit since moving here. When Alana and I along with our son moved into Kala Point and rented a house here three years ago, we quickly realized that this is where we wanted to call home for years to come. We came to this conclusion for the same reasons you all did: the safe park-like settings and well-kept homes, the peaceful clubhouse with an always friendly staff, the beautiful beach that has its own charm for each season, and the amazing neighbors who each possess a different story. Consequently, last year we purchased the home which we had previously rented and cemented our commitment to the Kala Point community.

What specific attributes and qualifications do you have that would augment the Board's effectiveness?

Since moving to the Quimper Peninsula I've served as the K-12 principal for the Quilcene School District, during which time I've gained valuable experience in many areas highly relatable to the duties of a board member: grounds maintenance, budgeting, human resources, technology, and interpersonal communications, among others. I've also previously served eight years in the Navy and as both a volunteer firefighter and EMT.

What community issues in Kala Point are you most interested in addressing as a Board member?

I've made the decision to run for the board because I want to work to ensure Kala Point remains the beautiful community we all love for years to come. To do this, there are three major areas I would like to focus on

as a board member. First, I think it paramount for the success of our community that involvement rises above a small group of individuals. For this, I would like to make sure that meetings are at times that work for all. While a great deal of Kala Point is retired, many residents are simply unable to participate if committee and board meetings continue to be held early in the day on weekdays. Second, the board must promote accessibility. When questions are asked or comments made, the right decision is never to discourage speaking up or shaming those that ask why. Lastly, the tone of signage and correspondence should improve. Often times it's not what is said, but rather how it is said.

What is your understanding of the principal responsibilities of the KPOA Board?

I see the primary responsibilities to include promoting a friendly and accessible board, ensuring governing documents are adhered to fairly, committees are run efficiently and appropriately, and involving all stakeholders in important decisions.

Are there areas in our CC&Rs or other governing documents that need to be modified? If so, what are these areas and what are your suggested changes?

I do not have any specific examples of any amendments at this time. ♦

KPOA Board of Directors Candidate



Dan Nordlund

53 Sulgrave Place

My wife, Libby, and I began vacationing at Kala Point as Resorts West timeshare owners around 1995. It was our favorite Resorts West destination and we decided we wanted to retire at Kala Point. We bought our Kala Point home in December 2015 and moved to Kala Point full time in June 2016.

After I retired in July 2017, I began attending board meetings. I have developed an interest in emergency preparedness and began taking the Community Emergency Response Team training sponsored by Kala Point Emergency Preparedness Committee.

I believe that the Kala Point community can only be managed for the benefit of the members if members participate. At this point in my life I have time to participate, and I believe I can contribute in a meaningful way. In the past, I served on my church board in Bothell and was board representative to the finance committee. The church budget was approximately \$500K at the time. I have also served on the Washington State Institutional Review Board. This board is responsible for protecting citizens' rights, safety, and privacy where state records are being used for research. As a medical services researcher, I had to mediate between various stakeholder groups which had differing (sometimes conflicting,) needs and concerns.

What specific attributes and qualifications do you have that would augment the Board's effectiveness?

I have experience with risk/cost benefit analyses and balancing competing interests when working towards solutions to problems. I believe I can be helpful in evaluating and setting board priorities for the future, always mindful that Kala Point is a community with diverse, sometimes conflicting needs and concerns.

What community issues in Kala Point are you most interested in addressing as a Board member?

My primary interests are in the areas of emergency preparedness, budget, and working to increase community awareness and participation in KPOA affairs.

What is your understanding of the principal responsibilities of the KPOA Board?

The principal responsibilities are to manage the affairs of the KPOA for the benefit of the members in accordance with the CC&Rs and other governing documents.

Are there areas in our CC&Rs or other governing documents that need to be modified? If so, what are these areas and what are your suggested changes?

The board is currently working on proposals for harmonizing sections of the CC&Rs with the state RCWs. I don't believe any other changes are necessary at this time. However, as representatives for Kala Point residents, the board should continue to listen to the community to determine if there need to be changes to the governing documents in the future. ♦

KPOA Board of Directors Candidate



Gary Obermeyer

52 Buckhorn Place

I am a candidate for the KPOA Board because I love this place – the people, the natural beauty, and the democratic governance.

I'm a former teacher and have served in numerous leadership positions in the National Education Association. In 1986, I launched a home-based business designing and using online tools to facilitate school improvement. Since moving to Kala Point three years ago, I've been very active in our community:

- Serving on the KPOA Elections Committee, attending Board meetings, offering testimony, and contributing to the *Kala Pointer*
- Consulting in the development of a “gate survey,” and presenting an analysis of the data to the Board
- Organizing, facilitating, and managing a Beach Watch to document beach activity
- Advocating for revisions to the Kala Point sign policy
- Serving on the Responsible Dog Owners Ad-Hoc Committee
- Enlisting as a volunteer to deliver food/necessities during the pandemic

My wife, Kate Lore, and I participate often in KP Social Plus events. With our dog, Brinca, we frequently visit the beach where we enjoy meeting and chatting with our neighbors and their guests.

What specific attributes and qualifications do you have that would augment the Board's effectiveness?

I've served on boards for a variety of non-profit organizations including a Natural Resources District, the National Education Association, the Greater

Portland Sustainability Education Network, and now, Executive Secretary to the Eliot Institute Board. I know and understand the critical need for listening deeply, debating respectfully, and supporting decisions fully.

What community issues in Kala Point are you most interested in addressing as a Board member?

I am interested in the attractiveness, safety, and resilience of Kala Point – all issues addressed in one way or another by Kala Point committees. Thus, the most important matter is filling and supporting our committees. For the near future, this will be complicated by the pandemic – raising the importance of continuing to upgrade the website and to use online communication.

What is your understanding of the principal responsibilities of the KPOA Board?

The principle responsibilities of the Board are threefold: 1) ensuring the faithful implementation of our by-laws and covenants, 2) engaging the whole community in continual assessments of concerns and aspirations, and 3) being open to change when change is in order. My experiences as a teacher and organizer are well suited to this role.

Are there areas in our CC&Rs or other governing documents that need to be modified? If so, what are these areas and what are your suggested changes?

I'm keeping an open mind about the CC&Rs and governing documents, trusting that if the Board is effective in engaging members and residents, we will know when and what to change. That said, particular attention should be paid to the evolving demographics of our community, given the increasing number of young families and working-age residents. ♦

The Art That We Do

Thanks to the artists who responded to our request to see what you've been up to during the pandemic. You've been busy! We plan to run submissions over the next few issues.

A recent *Kala Pointer* blurb asked that you might like to see art that Kala Point residents have created during our stay home, stay safe time. Here are a few of the little things I have been doing to help cope with the isolation and yet make the best of the situation.



Port Townsend School of Arts promoted a *Post Cards from Home* project. Three homemade art postcards could be submitted by local artists to be displayed in the Grover Gallery windows. I loved this and continued making cards as they brought me joy.



My husband makes wonderful wood pieces and sculptures that I paint, and we have been enjoying our time together creating mini lighthouse scenes that symbolize the guidance of the light from the shore over troubled waters... bringing weary sailors safely home.



I've also been painting "smalls" for cards, it helps me to consider the hope we will make it through and will be able to celebrate with our community on a more personal and closer level. I look forward to that day very much!

Thank you for all you do in the *Kala Pointer*, I enjoy it very much and am thankful for the neighborhood we live in and the caring folks that make it possible!

My husband and I are so very thankful for the beach we all get to enjoy, especially during this challenging time. We walk along the shores quite often, breathing in the fresh air and listening to the waves lap up on the shore... a peace within all the cares of current events. I especially like to walk on the hard sand at low tide and leave a little bit of art for others to enjoy as they stroll along. I especially like to watch the tide come in and erase the lines providing a brand-new canvas for another day. So, if you wander out to the point at low tide, take a few extra steps out toward the water and maybe you will find a lighthearted design to bring a smile to your heart.

Sue Stanton, Wellington Court ♦

Committee Reports

Architectural Committee

Meeting: April 16, 2020, by email

Projects Summary:

- (17) Projects; (2) Completed; (14) Ongoing; and (1) New Project

Old Business:

- Project reports were given by email and updated on the Project Worksheet

New Business:

- Lot 168 – Approved custom garden enclosure

Emergency Preparedness Committee

There was no EPC meeting this month.

Anne Englander, Chair provided the following updates:

COVID-19

- Jefferson County is assessing the schedule it may follow in loosening some restrictions, in accordance with the Governor's four-phase plan; see the [EPC website](#) for details on Gov. Inslee's press conferences, his stay-at-home order, and the State's phased approach to lifting restrictions.
- Additional updated COVID information is available on the EPC and Kala Point websites. Our volunteer shopper list – listing over 20 people willing to help Kala Point residents with errands for food and other essentials – is posted on the [EPC website](#). Those needing assistance should contact their block captain to be matched with an available volunteer.
- Be sure to check the websites under COVID-19 Resources for the Local 20/20 page, which has the latest updates on the county's status, where to go for help, and often changing resources like restaurants and grocery stores.
- Mark Miller has made a significant quantity of hand sanitizer (65% alcohol, 35% aloe); he has made it available to those who have volunteered to shop for Kala Point residents and to EPC members, to help them stay healthy and help others.

Funds for EJFR

EPC's fundraiser raised \$4,250 (more than in any previous year!) for EJFR's use in purchasing portable airway suction units. Thanks to everyone who donated, and who planned for and stood ready to help pull off the Potato Bake that didn't happen. A successful effort, one of many examples of your and Kala Point's generosity!

First Aid

In lieu of EPC's usual training segments at its meetings, Terry Rose sent her First Aid team training segments including quizzes on first aid practices, and injury/illness scenarios to work through.

How Are We Coping?

From Tim Twiford, some positive comments he has heard in casual, but safe, conversations in passing about lifestyle changes during these past few weeks:

"We are more active now; taking more walks, working in the yard, biking...etc; feeling healthier now."

"We have rediscovered the joy of cooking. Making dishes we wouldn't normally have time or desire to try."

"Life is simpler, less stressful. I'm reading more."

And, per Tim, the topic of saving money comes up in many different forms; from dinners out, to gas, to haircuts...!

Stay safe and healthy.

Grounds Committee

Meeting: May 5, 2020 via teleconference

We discussed the following:

- After some discussion, it was agreed that a small word change should be made to the recently revised GC APPs. Under APP-VIII-2(3.) "board member" should be changed to "Grounds Committee member." A motion was offered at the May 12 Board meeting and unanimously approved.
- Stan Cummings presented his review of the KPOA "No Parking" signs. The Grounds Committee approved, based on the new sign policy (APP VIII-4), a new format of white-on-blue for the seven locations where orange-on-white signs are currently installed. Keith will have the sign company prepare a proof for review. Also, the Committee approved the removal of the "No Parking" sign located along the road to the beach.
- Scott Rovanpera presented draft changes to the Grounds Committee APPs resulting from discussions within the Responsible Dog Owners ad hoc Committee (RDOC). The RDOC will discuss again at its next meeting and present the final draft for approval.
- Stan Cummings has graciously agreed to Chair the Committee.

Committee Reports

Internal Control Committee

Meeting April 15, 2020, by teleconference

Old Business:

- Discussed Draft Audit.

New Business:

- Approved motion to postpone monthly expense reviews.
- Approved motion to recommend “Draft Audit” with Finance Committee to BOD.
- Discussed completion of income tax filing.

Approved no new meetings including May, until we can get together again.

Publications Committee

Meeting: May 4, 2020, via Zoom call

- During a discussion about updating the KPOA website, members asked if there are documents that can help drive content; none apparently exist
- A suggestion was made to include more photos of people partaking in activities on the KPOA website
- The General Manager will be contacted about uploading previous issues of the *Kala Pointer* to the KPOA website while the Administration Office is closed.
- The June *Kala Pointer* will include the four Board candidates’ bios and responses to the Election Committee’s survey questions.
- It was suggested that more articles be submitted that highlight the crafts, arts, wood-working projects, and poetry created by our residents.
- Scott Rovanpera will follow up with Keith Larson regarding the tracking of paid advertisers for the *Kala Pointer*. The Publications Committee needs to know which advertisers have paid to date for advertisements and classifieds, including the advertisement duration.
- Marilyn Berry has resigned from the Publications Committee; the hope is that she will still contribute some of her talents to the *Kala Pointer*

The Publications Committee still needs new members, especially those who can help with layout.

Responsible Dog Owner (RDO) Committee

Meeting: May 12, 2020

Highlights:

- It was decided to table the proposed pet regulation as a motion for approval by the Board of Directors. The RDO Committee felt that the language was not settled, and the direction and purpose of this rules section needs to be clarified and consistent.
- Scott Rovanpera and Donna Colwell will meet with Erik Allen, newly hired Jefferson County Animal Control Officer, to discuss the County perspective on dog attacks.
- The committee will also be suggesting new verbiage for the sign posted at the beach. The committee wants to emphasize the responsibility each dog owner has when walking their dogs at the beach.
- Gary Obermeyer suggested that the RDO committee could distribute a survey among Kala Point residents soliciting their opinion on canine issues within our community.

Tree Committee

Meeting: May 14, 2020

Tree committee met in the field, practicing social distancing behaviors.

- There are 10 previously approved cases still open. Cases are closed when the work has been completed.
- The committee reviewed one new case. All but one cedar was approved for removal at 90 Cedarview Dr.
- The committee will continue to meet outdoors until it is safe to resume our regular meetings. ♦

For those who don't want Alexa listening in on your conversations, they're making a male version...

It doesn't listen to anything.

Get To Know Your Neighbors *Suzanne Eggleston*

Dick and Donna Nockleby

Pinecrest Drive

At this time of year, it's not uncommon for walkers to come to a full stop when passing Dick and Donna Nockleby's home. Their yard is a kaleidoscope of color due largely to the dazzling display of 166 rhododendrons — 79 species, 68 hybrids, 10 native macrophyllums and nine azaleas — all in various stages of blooming.



When the Nocklebys moved into their Pinecrest home in 2001, there was not much landscaping. According to Dick, there were just three rhododendrons (two of which are still alive) amongst the ferns, salal and big trees.

“We have had some interest in rhododendrons for a long time, but started planting them here after we learned the deer don't eat them,” says Dick. “At prior homes, we grew roses which we loved, but the deer here love them also so we can't grow them.”

Before moving to Kala Point, the couple lived in Salem, Oregon. “We moved here to be closer to our daughter who at that time lived in Seattle,” says Donna. “We also knew some old friends who lived in Kala Point, Bill and Sue Conklin.”

Now their daughter Janel lives in Turners Falls, Massachusetts. Their son Mark lives in Santa Cruz, California.

Dick and Donna both grew up in Oregon's Hood River Valley. “Dick the country boy attended the high school in the valley, and Donna the townie attended the high school in the City of Hood River,” says Dick. “We didn't really meet until after graduation, and although we each claim our school was better, both schools are

now extinct and they combined them into one high school in the valley.”

The couple has been married 55 years.

Donna was a community health nurse in Oregon, Southwest Washington, and Seattle/King County, mainly working with high-risk mothers and infants. She graduated from the Oregon Health Sciences University with a nursing degree.

Dick graduated from University of Oregon in Eugene. He worked for U.S. Bank for many years, and then served the Supervisor of Banks and Credit Unions for the State of Oregon until he retired.

Dick and Donna have traveled to several areas in the Western states. “Our favorite locations include Healdsburg, Monterey and Solvang in California, and Santa Fe, New Mexico,” says Donna. “We have not done much foreign travel, but our favorite spot is Bergen, Norway.”

Donna treasures a trip she took with her mother and sister, now both deceased, in the early 1990s. They cruised the Danube River from Vienna to the Black Sea, then took a ship to Istanbul.



Dick and Donna now enjoy the various festivals and music venues in Port Townsend, and the natural beauty of the area — when they aren't out in the yard. They agree on their favorite rhododendron: Loderi King George, a plant with huge white blooms and wonderful fragrance.

“We also keep alert by walking around Kala Point dodging bicycles, dog walkers, cars and construction vehicles,” says Dick.

If you'd like to see photos of the Nockleby's rhododendrons, visit [Dick's Flickr album](#). ♦

Get To Know Your Neighbors *Leslie Weertman*

Bruce and Leslie Weertman

Terrace Drive

We have a long history of visiting the Olympic Peninsula. When we were married at Fort Worden in 1991, we rented the USO hall and had our friends cook the wedding dinner. That year we bought a 100-year-old four-story home in Ballard, a neighborhood of Seattle; this March, we sold the home.



Our plan for many years had been to buy a home in Port Townsend for retirement, but the natural forest beauty, the beach and the privacy at Kala Point made the choice for us. We feel fortunate to be living in social isolation in a place where we can safely and easily enjoy the outdoors. While the home we bought in Kala Terrace was quite modern, the yard has been a challenge in its size and steep hillside. We are discovering digging with a shovel is excellent exercise.

Bruce's parents were famous Northwestern University scientists, his father even had an island named after him in recognition of his contribution to ice fracture or mathematical modeling work. Bruce spent many field seasons measuring Antarctic ice sheets to complete his PhD in Geophysics before starting work as

a data base programmer for seismic or earthquake data. He retired last year so we became free to downsize. Leslie, an OBGYN physician unlike her pathologist father, worked first as faculty at Harborview Medical Center and then owned a small private Ballard medical practice until retirement in 2017. Retirement from practice has allowed more time for gardening, cooking, friends, and travel. Oh, and the doggies, lots of walking!

We have one 25-year old son, Willem, who graduated in Oceanography/Marine Biology from the University of Washington, and is now enrolled in a Master's program at Alaska Pacific University. He has also managed to do research every summer on San Juan Island at the Friday Harbor Labs, studying octopus behavior. He wanted us to buy a home on the islands but now that we are here, he has been happy to visit, to launch a kayak off the Kala Point beach, ride bicycles with Bruce, and appreciates that we are still so close to Seattle.



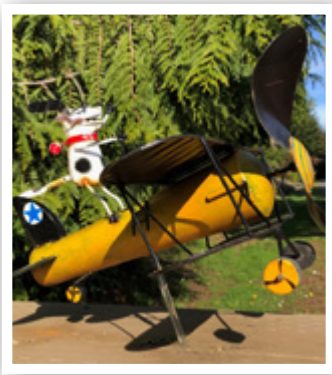
As you can see from our selfie phone photo, we have two wiggling corgis, Luna and Toad, sister and brother. Luna was diagnosed last year with the genetic disease, DM or degenerative myopathy, and it is slowly paralyzing her hind quarters. She goes running on the beach every morning and we think it has kept her strong and happy. But her decline is inevitable and as much as we love corgis, in the future we will need a breed that does not require lifting into the car and can tolerate the desert because as we age, like lizards, we plan to stay more at our home in Portal, Arizona, or the Chiricahua Mountains. This spring we are fortunate to be here at Kala Point surviving the pandemic.

As for philosophy, a favorite is said best by Albert Camus, "In the midst of winter, I found there was, within me, an invincible summer." ♦

A Scavenger Hunt?

Angela George and Marilyn Berry have been busy snapping photos of the art adorning many people’s street number posts – “Foo Foes” we call them. You will see, we have quite a collection. We thought it would be fun (and give you something to do while physical distancing is still recommended) for our Kala Point neighbors to go on sort of a scavenger hunt to find the ones we show here, and maybe add some that we don’t.

If you are up to the challenge drive, walk, bike or use whatever means you prefer and snap pictures of some Foo Foes *you* find. Submit your collection to yourkalapointer@kalapoint.org. ♦



Update to the Pinecrest Paving Project

Monday, June 1, 2020

Lakeside Industries will be grinding transitions at the Kala Point Dr., Oak Shore Dr., Fairbreeze Dr., and Baycliff Dr. intersections, including all the driveway approaches along Pinecrest Dr.

Asphalt repairs will be ground out and filled with new asphalt.

Pinecrest Court, Westridge Court, and the Mail Station nearest to Storage Lot A will be paved with new asphalt.

We have arranged with Murrey’s Olympic Disposal to pick up garbage, for those owners on Pinecrest Dr., Pinewood Ct. and Westridge Ct., on Friday, June 5.

Tuesday, June 2, 2020

Straight-line paving will begin at the Kala Point Dr. intersection and conclude at the Westridge Court intersection.

Wednesday, June 3, 2020

Straight-line paving will begin at the Westridge Court intersection and conclude at the Baycliff Dr. intersection.

Flaggers will be present during the entire project to assist with traffic flow.

It is imperative that everyone understands that significant to minor delays will occur throughout this project. I ask for your patience and understanding as this project begins.

Do not park any vehicles along Pinecrest Dr. or the Cul-de-sac right of ways during this project.

If you have schedules that may conflict with the project, you may park your vehicles on Oak Shore Dr. or Fairbreeze Dr.

Weather conditions may impact the paving schedule; if so, you will be updated as we move forward with the project.

Thank you, Keith Larson, General Manager ♦



Neighborhood Classified Ads

Neighborhood Classified Ads cost only ten cents per word.
Please pay at the Kala Point office when you submit your ad.

Commercial Advertisers

When you patronize one of our advertisers, please tell them you saw their ad in the *Kala Pointer*.
We want them to know their advertising dollars are well spent.
If you're satisfied, please tell your friends and neighbors. If you're not satisfied, please tell the advertiser.

References Available



AL'S CARPET CLEANING
360.385.1117

Expert Carpet Cleaning at its Best!

Benny & Sue Short



your stuff builds homes.

Give your neighbors a hand up by donating your gently used furniture, appliances, and other home goods.

FREE donation pickups
360-385-9653
www.habitajtejc.org/shop



Store
Habitat for Humanity
of East Jefferson County

24-HOUR EMERGENCY SERVICE



Good Man Sanitation

- Septic Pumping & Inspection **360.385.7155**
- Electronic Tank Locator **360.457.4121**
- Video Inspection
- Bonded & Insured **800.743.2515**
- Certified Maintenance & Monitoring

PORTABLE RESTROOM RENTALS
Delivered & Serviced
Special Events • Construction • Farms

www.goodmansanitationinc.com
Locally owned and serving the Olympic Peninsula since 1954

FOX'S Blinds, Shades, etc.

Our prices are lower than the warehouse & club stores!

**For custom products our prices can't be beat!
Over 35 years' experience.**

For a free in-home consultation, call
360-379-2548

Contractor's License #FOXDRD*959CQ

Quality & Service at Competitive Prices

Tile, Carpet, Hardwood, Bamboo Flooring,
Financing Available O.A.C.

We have Furniture, Mattresses, Recliners & more!



PENINSULA FLOORS & FURNISHINGS

2405 West Sims Way • Port Townsend
360-385-0945

Peninsula Residential Services

Three Brothers serving the Olympic and Kitsap Peninsulas

Home Maintenance

Painting, electrical, plumbing, roofing, drywall, light remodel, landscaping, decks, hauling, concrete, pressure washing, general labor, and handyman services and more.

David Hensel 360-301-9012

www.peninsularesidentialservices.com



Mindful Meals by Ana

Healthy Meals Delivered Weekly

Local & Organic Ingredients

Special Diets Accommodated

eat well at home without the fuss!

mindfulmealsbyana.com 339 970 1376



STAY RIGHT THERE AT HOME

We are committed to the health of our community. We ask you to *stay committed* to social distancing.

jeffersonhealthcare.org/covid-19

Jefferson
Healthcare



Kala Pointer Newsletter

Kala Point Owners Association
1760 Kala Point Drive
Port Townsend, WA 98368

Volunteer for the Publications Committee

**The Publications Committee
needs new members! Why join?**

You often find out things happening in
the community *before* your neighbors

You get to collaborate with a small but
mighty group of people committed to
communication, entertainment and
producing a quality newsletter

It's satisfying to create something
tangible. If you have questions, email...

yourkalapointer@kalapoint.org

Prime Office Space Available

At the entrance to Kala Point

**Kala Point
Professional Building**

Contact: Geoff at 360-621-7419

260kppb@gmail.com

