

Kala Pointer



The Kala Pointer is a Monthly Publication of the Kala Point Owners' Association

February 2019

President's Message

Joe Englander, President
kpoaboard_englander@kalapoint.org

No matter how current the *Kala Pointer* tries to be, all our articles are from the past. That's just the way production of a newsletter works. As I write this on January 17, the survey of Kala Pointers' opinions, especially regarding front gate access, is ready to go out to 977 unique email addresses.

Three submitted email addresses were invalid. There also appeared to have been a few “ringers” who did not live at the addresses they supplied which was confirmed by telephone. Also, there were some doublings of emails; but since only one survey can be sent to any one email address, only a single email address was counted in those cases. Because this is a survey and not a vote, the Board of Directors decided to allow two unique email addresses from any Lot-Home-or-Condo. This permits spouses, partners, or roommates to have separate, and even conflicting, opinions. But each person is permitted to have only one opinion no matter how many LHCs they may own or how many email addresses or personalities they may have.

If you haven't yet replied to the survey, the **deadline for response is February 4**. Simply click the link in the email we sent you from Survey

**Emergency
Information
Sheets,
See Page 4**

Monkey and you will be connected to the survey. The Board of Directors really is interested in your opinion. If you don't have email, there are paper copies of the survey available at the Clubhouse and the Administration Office where you can complete and return them within a few minutes. Didn't get the email, check your “Junk mail.” I hope to have the results available by the February 12 Board Meeting, so the Board can discuss and possibly act on them.

A major accomplishment by the EPC is hosting Dr. Susan Kieffer, PhD, a MacArthur Foundation Genius who is also a member of the National Academy of Sciences, at our Clubhouse on Thursday, February 21, at 4 p.m. She will give a lecture with the same title as her recent book, *The Dynamics of Disaster*. I encourage you to take advantage of this unique opportunity.

The EPC Cassandra Project is developing into a kind of “insurance” program in that it will not be a replacement for your being prepared for disaster; rather it will work to try to cover the community's unexpected disaster-related needs. What that means is that even though the EPC is working to help Kala Point as whole to be prepared, we each individually need to continue gathering and storing the emergency supplies we will personally want such as food, water, and medicine for a month or more. And don't forget your personal two bucket system—if you don't know what that is, ask your block captain.

February Kala Pointer Staff

Editor: Gail White

Copy Editors: Nancy Leeds
Mike Burk, Suzanne Eggleston

Secretary: Ed Zinser

Masthead Photo: Bob Segui

February Contributors

Patti Biazzo
KP Committees
Joe Englander
Anne Englander
Suzanne Eggleston
Mike Harte

Nancy Leeds
Carol Letterman
Michael Machette
Dale Moses
Phyllis Wurscher
Ed Zinser

Next Newsletter Deadline

The deadline for the March 2019 issue of the *Kala Pointer* is February 19

Submit your articles to:
YourKalaPointer@kalapoint.org

Our *Letter to the Editor* policy can be found at KalaPoint.org

2018 - 2019 Board of Directors

President, Joe Englander
kpoaboard_englander@kalapoint.org

Vice President, Kim Titus
kpoaboard_titus@kalapoint.org

CFO, John Oliveira
cfo_oliveira@kalapoint.org

Secretary, Dale Moses
kpoaboard_moses@kalapoint.org

Director, Tom Gillespie
kpoaboard_gillespie@kalapoint.org

Director, Michael Machette
kpoaboard_machette@kalapoint.org

Director, Pat Miles
kpoaboard_miles@kalapoint.org

Director, Steve Reed
kpoaboard_reed@kalapoint.org

Director, David Miller
kpoaboard_miller@kalapoint.org

Email the Entire Board
kpoa_board@kalapoint.org

2018 - 2019 Committees

Architectural
Nancy Machette

BMAC
TBA

Finance
John Oliveira

Internal Control
David Harrah

Elections
TBA

Personnel
Joe Englander

Publications
Nancy Leeds

Emergency Preparedness (EPC)
Anne Englander, Joyce Wenz

Social Plus
Char Quandt, Diana Zinn, Patti Biazzo

Tree
Rotating

What Happened at the January Board Meeting?

By Dale Moses, KPOA Board Secretary

Your KPOA Board met at 1 p.m. for about two-and-a-half hours on Tuesday, January 8, 2019, in our KPOA clubhouse. Only Board member Pat Miles was absent. When we started there were 20 folks in attendance; some departed as the meeting proceeded. Our monthly corresponding secretary, Tom Gillespie, received over three dozen inputs that he put into a spreadsheet which you can read it [here](#).

Items discussed included these topics:

- Approving minutes from both the January budget meeting and the regular meeting
- Assessment collections are doing just fine
- Installation of new computers for the office is well along
- Pool and clubhouse plumbing repairs are about to start
- Keith has starting hiring for a new maintenance person
- KPOA insurance premium is \$4,000 less for this coming year
- Approval of and decision to move forward on replacement on the front gate electronics (\$8,500)
- Keith presented a proposed policy on both vehicle access and towing; we will review these over the coming month
- We had a good discussion on the pending survey about security and went through each of the questions. It now contains both general impression questions as well as specific thoughts about gate operations. The Board approved the survey to be administered primarily electronically (some paper copies will be available) and we agreed it should go to emails from a merged-purged version of all the email lists we are holding
- Committee reports were presented
- The volunteers checking cars at the beach reported 211 vehicles checked, 21 did not have a Kala Point sticker
- An audience member requested that copies of materials seen by the Board during the meeting also be available to the audience

That was it folks.

The Kala Point community is a common-interest residential homeowner association (HOA). When purchasing or building within Kala Point, homeowners agree to follow the HOA's governing documents, which include: Conditions, Covenants and Restrictions of Record (CC&Rs); Rules and Regulations; By-Laws; and detailed Administrative Policies and Procedures (APPs). APPs are Board-enacted rules. The protective umbrella of these governing documents works in the best interest of all homeowners ensuring higher standards of neighborhood appearance and enhancing the collective value of the homes.

How to Make February Better

By Nancy Leeds

It makes perfect sense that the month of February is the shortest month of the year. Who wants to remain in the dark, cold, rainy, least appealing part of the year? However, there is one shimmering diamond right smack dab in the middle of the month that kind of forgives the negatives. That would be Valentine's Day.

Most folks approve of having the rosy glow of appreciation influence their February lives for a few days before and after the 14th. But, what if we looked for the rosy glow from the first to the last day of this dark month? I mean, what if we concentrated on appreciation?

Oh, look, my laundry basket is empty! My car is clean. My neighbor is a wonderful person. There aren't any potholes in Kala Point roads. We have a beautiful beach all to ourselves. The leaves have finally stopped falling. The garage is cold enough to use as a refrigerator.

Here's a good one. I'm old(ish), but I can work a computer and smart phone pretty well, thank you. Praise be to spices and herbs, electricity, running water, the night sky, and a warm home. Give me an inch and I'll take a marathon to observe what's good about life. But you get the idea. Notice the appeal of things instead of bemoaning dark February. Let me say your month-long rosy glow makes you look "mahvelous dahling, Happy Valentine's Day."



Tips on How to Stay Warm

By Nancy Leeds

- Run the ceiling fan in reverse (clockwise in the winter). This will help warm air near the ceiling circulate to the ground below.
- Always wear a hat outside. This one should be obvious, but it's amazing how many people think a scarf and gloves is enough. You can lose up to 50 percent of your body heat if your head is uncovered. What's more, that can trigger blood vessel constriction in other parts of the body, thereby causing your feet and hands to be cold too.
- Attic access or attic doors can be the source of large amounts of heat loss. Make sure your attic access is very well insulated.
- Keep blankets handy and use them. When we sit, our circulation slows down. Keeping a throw blanket over your lap while you're knitting or watching TV can improve your comfort levels without turning up the thermostat.

Kala Point Emergency Information Sheets Fill Yours Out Now!

Kala Point's Emergency Preparedness Committee has created information forms that are simple to complete and that will help us help you in the event of a disaster. These Emergency Information Sheets tell us who your local and out-of-area emergency contacts are, and what special needs, resources, skills, and pets you have. Completion of these forms is voluntary, but they are for your benefit, and will be used only to help you in an emergency. Take five minutes to go to [KP Emergency Info Sheet](#), fill the form out, and submit it electronically. Your information will remain confidential and securely stored. It's easy and it's important. **Fill Out Yours Now!**

. Did You Forget?

By Anne Englander, EPC Chair

OK, you've been good about making a list of New Year's resolutions and maybe you've even been good about sticking to them so far. But did you remember to check your batteries and emergency equipment? Emergencies happen anytime, so if you haven't done it recently, take the time right now to check your smoke detector and your NOAA radio, and, for that matter, fire up your chain saw or generator to make sure everything is in working order. And now's the perfect time to check the batteries in your walkie-talkie FRS radio.

The KPOA-approved walkie-talkies require three AA batteries. Batteries will drain, more quickly in some radios than others, so it's important to **check your batteries** every few months, and especially prior to any drill/practice. If the radio doesn't turn on, replace the three AA batteries. On the back of the radio, pull the belt clip retaining pin outwards from the radio and lift the clip upwards to slide it off. Locate the battery hatch pin at the bottom of the radio, lift it up and raise the hatch to access the batteries. Replace the batteries using the + and - guides, close the battery hatch, and replace the clip.

Or, if you want longer battery life and feel you can install batteries under pressure in an emergency, remove the batteries and store them in a plastic bag along with your radio; install the batteries when an emergency arises and you need to use your walkie-talkie.

Remember, walkie-talkie radios are the most effective and fail-safe way to communicate with your neighbors when other kinds of communication fail. Don't have a walkie-talkie yet? A KPOA-approved walkie-talkie is available through your block captain, and comes pre-programmed for your particular zone within Kala Point. The cost is only \$10 including batteries. It's a critical part of your emergency preparations. Get one now!



Ring in the 2019 New Year at Kala Point

By Pattie Biazzo

Kala Point New Year's Eve party at the clubhouse was fantastic! A special thank you to the Midnight Train Blues/rock n roll band. Also, a shout out to Susie Gorski, Pattie Horvath, Diana Zinn and Louise Tragard for the great decorating and last but not least, the hard work of our own clubhouse attendant, Phil White.

May this new year find you healthier and happier, peaceful, content, satisfied, looking forward to a fresh start, revitalizing interests, a variety of pleasures, interesting new people, material and personal successes to write on your heart that every day is to make this new year the "BEST ONE YET"



HAPPY NEW YEAR TO ALL!



2019



2019



Calendar of Events for February

By Ed Zinser & Suzanne Eggleston

February 1

The Cripple of Inishmaam. Presented by The One-Time Players, this play by Martin McDonagh benefits Port Townsend High School Drama Department. **Times:** First three Fridays and Saturdays in February at 7 p.m., plus Sunday, February 10, at 2:30 p.m. **Cost:** Tickets are \$10 available at the door. **Location:** Port Townsend High School Auditorium, 1500 Van Ness St. **Contact:** 360-385-6207, <http://onetimeplayers.org>

Red Cross First Aid & CPR/AED Class. This course incorporates the latest science and teaches students to recognize and care for a variety of first aid situations, such as heart attack, burns, cuts, sudden illnesses, and breathing emergencies. **Times:** 9 a.m. to 1:30 p.m. **Cost:** \$75. **Location:** Mountain View Commons, 1925 Blaine St. **Contact:** 253-238-0519, info@northwestresponse.com, www.northwestresponse.com/course/

February 4

2019 Farming Film Festival — Oyster Farming: Restoration of the Olympia Oyster and Community Shellfish Farming and Water Quality Restoration. Two short films are followed by community discussion and Q&A with native and local oyster farmers. **Time:** 6 to 7:30 p.m. **Cost:** Free. **Location:** Jefferson County Library, 620 Cedar Ave, Port Hadlock. **Contact:** 360-385-6544, choffmanhill@jclibrary.info

February 6

Inquiring Mind Lecture: Let's Talk about Race. Renowned author and professor Clyde Ford leads a discussion on race in modern-day America with a heavy emphasis on audience participation. Participants will come away with tools for engaging in conversations about race in an honest, transparent, and meaningful way. Co-sponsored by Humanities Washington Speakers Bureau. **Time:** 6:30 to 8 p.m. **Cost:** Free. **Location:** Jefferson County Library, 620 Cedar Ave, Port Hadlock. **Contact:** 360-385-6544

February 10

Lecture: Seabirds and Marine Mammals of the Protection Island Aquatic Reserve. Naturalist Bob Boekelheide, the former director of the Dungeness River Audubon Center in Sequim, discusses seabirds and marine mammals of the 23,778-acre Protection Island Aquatic Reserve. The reserve is considered by biologists to be the single most important nesting area for seabirds in the Salish Sea. **Time:** 3:30 p.m. **Cost:** \$5; students and teachers: free. **Location:** Fort Worden State Park Chapel, Fort Worden Way. **Contact:** bboek@olympus.net

February 11

2019 Farming Film Festival — Green Gold. This film documents large-scale ecosystem restoration projects in China, Africa, South America and the Middle East, highlighting the enormous benefits for people and planet of undertaking these efforts globally. **Time:** 6 to 7:30 p.m. **Cost:** Free. **Location:** Jefferson County Library, 620 Cedar Ave, Port Hadlock. **Contact:** 360-385-6544, choffmanhill@jclibrary.info

February 21

The Dynamics of Disasters lecture. Dr. Susan Kieffer, geologist, author, MacArthur Foundation Genius and U.S. National Academy of Sciences member, to focus on earthquakes, tsunamis and volcanic eruptions. Sponsored by the Kala Point Emergency Preparedness Committee. **Time:** 4-5 p.m. **Cost:** Free. **Location:** KPOA Clubhouse (seating 90). **Contact:** Michael Machette, Machette1550@gmail.com or Anne Englander anne.englisher@gmail.com.

February 23

Annual Shipwrights' Regatta. The Northwest Maritime Center and the Port Townsend Sailing Association present the 28th Annual Shipwrights' Regatta. Boats of all construction and crew without boats are welcome; registrations accepted until 9 a.m. on race day. **Time:** race begins at noon. **Cost:** \$40 to enter; free to watch. **Location:** NW Maritime Center, 431 Water St. **Contact:** Catherine Leporati, 360-385-3628 x104, catherine@nwmaritime.org, nwmaritime.org/shipwrights/

Dungeness River Volunteer Tree Planting.

Volunteer to help the Jamestown S'Klallam Tribe and the North Olympic Salmon Coalition plant native trees along the Dungeness River with the long-term goal of restoring the historic floodplain. Tools and gloves will be provided, but feel free to bring your own along with warm, waterproof clothes and boots, water, and a lunch. Light refreshments and hot drinks will be provided. Go to www.nosc.org and click on the big green RSVP button. **Time:** 10 a.m. to 1 p.m. **Location:** Otter Way, Sequim. **Contact:** 360-504-5611, volunteer@nosc.org, nosc.org/event/dungeness-volunteer-planting-2/

February 25

2019 Farming Film Festival — Farming & Earth Repair Shorts. A series of short films highlighting farming success stories which include ecosystem restoration. **Time:** 6 to 7:30 p.m. **Cost:** Free. **Location:** Jefferson County Library, 620 Cedar Ave, Port Hadlock. **Contact:** 360-385-6544, choffmanhill@jclibrary.info

March 23 – SAVE THE DATE

Chili Cookoff and Potato Bake Fundraiser for East Jefferson Fire & Rescue. See page 12.

Attention Kala Pointers Hot Off the Press!

From East Jefferson Fire Rescue

The letter below was received January 30, 2019, by President Joe Englander from Bill Beezley, Public Information Officer of the East Jefferson Fire Rescue. Be sure to read it thoroughly if your residence is beyond the 4-Way Stop at Baycliff and Kala Point Drive. Paragraph 3 tells you how to measure your distance to the Chimacum Fire Station. Paragraph 4 explains how to find your fire insurance rating and how to contact the WSRB.

This is the latest information we have and are sharing as soon as possible. The phone number for the WSRB is 206-217-9772

Good afternoon:

I've spoken with all of you [Keith Larson, Joe Englander, Anne Englander] about the inaccuracies Chief Walkowski found after reviewing the work of the WSRB re-rating. I didn't mention that WSRB has been very helpful in this situation and is very willing to make adjustments where necessary.

To reiterate, residents of the southern 1/2 of Marrowstone Island will likely be (positively) impacted by this discovery. To determine if a house is impacted, a Google Maps directions search from 100 Indian Island Annex Road to the property in question should return an appropriate mileage distance. Roughly all Marrowstone Island residents residing from East Beach Road south may benefit.

For residents of Kala Point and Cape George, a Google Maps search from 9193 Rhody Drive in Chimacum and 35 Critter Lane in Port Townsend, respectively to the address in question will yield a distance. The goal is to be within 5 road miles from the nearest fire station. Much of Cape George Colony and a bit of the Village should be within 5 miles. The same goes for the bottom portion of Kala Point.

As I mention in the attached press release, **it is up to the resident to call the WSRB help line to inquire about their current rating.** If the answer is a 9, 9a or similar, ask the WSRB rep to calculate the accurate distance to their home and ensure it is beyond 5 miles. If not, a re-rating improvement may be in order for their home.

Please feel free to have residents contact our office at 360-385-2626 with questions related to this issue, but direct them to WSRB for initial information.

Thank you,

Bill Beezley, *Public Information Officer*
East Jefferson Fire Rescue
24 Seton Rd., Port Townsend, WA 98368
www.ejfr.org



Fire District Annexation of City of Pt. Townsend

Fellow Kala Pointers,

I'd like to thank Mike Harte for his letter posted in our January Newsletter – not only for the information but his service to the community and our local Fire District. Welcome to the Neighborhood!

I'd like to share some additional information and facts that aren't in the current communications being published (YesOnAnnexation.org, Facebook, EJFR website and City of Port Townsend).

Both Mike's article and facts put out by EJFR state district residents' level of service and taxes will not change due to annexation; however here are some significant changes since the Interlocal Agreement (ILA) went into effect in 2007.

1. An overall reduction in Volunteer firefighters – since 2007 to 2018 (same time frame) 40 to 50 volunteers have dwindled to 19 in 2018.

2. A decision to not staff 3 of the 5 county stations. Please be aware that you are no longer served 24/7 365 by Airport Station #1-3 due to inadequate staffing (as previously stated by Mike Harte) hence the increase in your insurance premiums

3. A 2017 WSRB (Washington State Rating Bureau) assessment issued a rating of 9A (virtually uninsurable) to specific areas - approx 1000+ homes within 5 miles of Airport, Marrowstone Island, and Cape George stations that went into effect Feb. 2018 doubling most residents in those areas insurance premiums. This represents 1/10th of the District population (ie – County).

a. For **Kala Point this includes approx 200 homes north of the four-way stop at Baycliff.**

4. A tax disparity between city and county residents for the same services undisclosed until now.

a. RCW 43.09.210 & Washington State

Constitution mandate equal taxing and the town must pay true and full value for the services received per the ILA.

b. Currently, the City owes the District close to 3 million dollars for this shortfall and if annexation passes they will continue the tax disparity at least through 2020

Although the Annexation will eventually resolve this disparity, possibly by 2023, we currently have not been advised of a 'plan' to address the lowered PC scores.... EJFR stated "The district is focusing efforts on lowering the 9A back to a 5 but will take time due to severe budget limitations"; however, according to all sources of 'yes for annexation', no new revenue (or current budget) show any signs of addressing this issue. The recent Notice of Recruitment for Volunteers for the overall district is a step in the right direction but still doesn't specifically address the volunteer stations.

The Annexation will give less District control of the commission responsible for providing the service that the city did not want to manage and expand the Board of Commissioners from 3 to 5 with 2 of those 100% focused on City issues (12 years of inequity by the city who has not paid true cost for services)

While annexation makes sense on the whole to consolidate, streamline and create efficiency and ensure tax levy parity so funds go directly to EJFR – we cannot afford to approve this plan, until EJFR Board of Commissioners advises a real plan to a) get the City of PT to pay their full fair share, and b) our PC rating is returned to overall district rating 5!

Former District Fire Chiefs and Firefighters are against this proposed annexation - if you have questions or would like further information please feel free to contact Pete Langley (former firefighter of 18 years with EJFR) at 360-531-1664

VOTE NO ON ANNEXATION!

Best Regards, Carol Letterman, 35 Pinecrest Ct

Another View

Hello Fellow Kala Pointers:

I am taking a moment to offer a follow-up reminder for the upcoming Jefferson County Ballot Initiative. Election Ballots will begin mailing to residents this month, on or before January 25th, and the election will conclude on February 12th.

(Continued on page 9)

"Letters to the Editor ([Continued](#) from page 8)

In my previous letter/article I outlined in broad terms the value of the EJFR, aka Fire District #1, Annexation effort that will appear on that Ballot, and what it means for City and District Residents alike in terms of cost and service.

Please allow me to offer this article as a summary follow up.

The EJFR annexation effort has no fiscal impact on Districts Residents (that's us). We will not see an increase in our tax assessment for Fire/EMS Services. Nor will our current level of service change.

Port Townsend does not have its own Fire Department. If approved by voters, this annexation effort will annex Port Townsend **INTO** East Jefferson Fire & Rescue for the continued provision of Fire and EMS Services, not the other way around.

EJFR has been functionally consolidated for 10 years (to include Port Townsend). EJFR currently provides Fire/EMS services to the town of Port Townsend via contracted services, which are subject to renegotiation.

Currently Port Townsend residents pay a lesser rate on their property taxes for Fire & EMS Services than District Residents. Approving this annexation would correct that imbalance, providing a single rate structure for all residents, which is the rate Kala Pointer's and all other District Residents currently pay.

As mentioned in my previous letter/article, if you have any questions, or wish to explore the EJFR Annexation effort in greater detail, please visit www.YesOnAnnexation.org or call 360.217.4177 or email at info@yesonannexation.org.

Thanks and Best Regards!
Mike Harte, Oak Shore Drive

Sniglets

Found by Nancy Leeds

Hawaska (high WA ska) – n. In an atlas, the rectangular box which contains Hawaii and Alaska and is located just off the coast of Arizona.

Ambiportalous (am bih PORT ahl us) - adj. Possessing the uncanny knack for approaching a set of double doors and ALWAYS pushing the locked one.

Percuburp (PER kyu berp) - n. The final gasp a coffee percolator makes to alert you it is ready.

Thermalophobia (thur muh lo FO be uh) - n. The fear when showering that someone will sneak in, flush the toilet, and scald you to death.

Obstinut (OB sta nut) - n. That one pistachio that is impossible to open.

**Have a story, photo, or Sniglet?
How about a poem or an anecdote?
A riddle or trivia question maybe?
Someone to thank?
Well... share it with us!
YourKalaPointer@KalaPoint.org**

KPOA Facility Hours

Administration Office

Monday -Thursday 8:30 a.m. - 2:30 p.m.
Friday 8:30 a.m. - 1:00 p.m.

October 16 - March 31, 2019

Clubhouse

Monday -Friday 9:00 a.m. - 8:00 p.m.
Saturday - Sunday 10:00 a.m. - 8:00 p.m.

Pool Closed

Jacuzzi and Spa

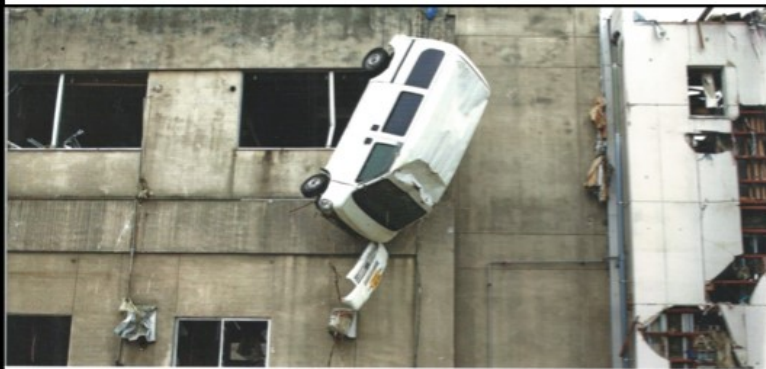
Monday -Friday 9:00 a.m. - 7:45 p.m.
Saturday -Sunday 1:00 p.m. - 7:45 p.m.



FEB. 21, 2019

***KALA POINT EMERGENCY
PREPAREDNESS COMMITTEE
LECTURE SERIES***

***presents
Susan Kieffer, Geologist***



THE DYNAMICS OF
DISASTER

SUSAN W. KIEFFER



***When: Thursday,
February 21st @ 4 PM***

Where: KPOA Clubhouse

Who: Kala Point residents

***What: Hour-long lecture on
the Dynamics of Disasters.
Her main focus will be on
earthquakes, tsunamis and
volcanic eruptions (and
maybe windstorms).***

***Dr. Kieffer is an
internationally renowned
geologist, MacArthur
Foundation Genius, and
member of the U.S. National
Academy of Sciences***

Committee Briefs

(Editor's note: Committee Briefs returns to the Kala Pointer. We hope this brief summary of each of Kala Point's volunteer committees gives readers an understanding of what it takes to keep our lovely area running smoothly. If you see a committee that you would like to join, please contact them. Your participation would be greatly appreciated.)

Architecture met in December to discuss 19 projects being monitored:

- one was completed and the deposit returned
- 16 ongoing
- two new

The Committee also reviewed and approved final changes to proposed amendments to two sections in the APP III: New Construction and Modifications to Existing Home. Additions were made to the Glossary for "Hard Surface Extension" and "Noncompliance Policy."

Other changes focused on landscaping project completion requirements, returning deposits, retaining walls in setbacks, and decks needing county permits. Appendix A Roofing was revised to state: "It's the owner's responsibility to ensure that original construction can accommodate roofing products that have different load requirements." The KPOA Board approved all recommended amendments to APP III at the January Board Meeting.

BMAC met on January 3 to discuss:

- the BMAC Tree Request Workshop for the central sector on January 10
- the status of 2018 Tree Requests in final review with Jefferson County Department of Community Development
- plans to coordinate tree cutting and remediation among southern sector clients

Additional members will be needed to replace three members who have resigned: Rich Munden, Paul Loubere and Dwight Oberholtzer. The next meeting is February 7 in the KPOA Admin Conference Room at 1:30 pm; guests are invited.

February Bluff Tree Requests

The Bluff Management Advisory Committee (BMAC) will be accepting requests for tree actions on Kala Point's central sector that extends from the south end of Winship Drive north to and including Baycliff Place. (No condos are located in this sector.)

All requests should be submitted to KPOA General Manager Keith Larson, gm_larson@kalapoint.org using the BMAC Tree Action Proposal Request Form, which is available at the office or on our [website](#). Make sure to include all required information. If you have questions or need more information, contact BMAC Chairman Michael Machette (Machette1550@gmail.com; 360-531-2441 cell).

Elections met on January 3 to discuss:

- status of recruitments for the three 2019 Board positions
- timeline for activities through the election in July
- recommendation to approve Gary Obermeyer as a new committee member by the Board

Additional members are needed for this small committee. The next meeting is at noon on February 7, location TBD.

The EPC met on January 3 to discuss:

- The purchase of new first-aid supplies and the need to schedule a second Basic First Aid class (first was on January 24) in the spring
- Successful radio communication practice on December 10; all but two zones participated
- Creation of electronic address and emergency information cards for all Kala Point residents to be kept securely on Block Captains' phones for communication during a disaster
- The addition of two new members to the Pet subcommittee: Tracy Wirta and Gayle Loeffler
- Map Your Neighborhood efforts to create a distributed network for training that will be followed by a potluck throughout Kala Point on the same night

The committee has several things in the works, including the logistics and focus of another EPC Expo, two disaster drills (one was held for EPC members on Jan. 31; one will be held for Kala Point as part of the national Great Shakeout on Oct. 17, 2019), an upcoming lecture in the Clubhouse on "Dynamics of Disaster" by MacArthur Genius and National Academy of Science member Dr. Susan Kieffer on February 21 at 4-5:30, and the Potato Bake/Chili Cook-off on March 23 at 5:30-7:30 pm.

The Internal Control Committee met to discuss:

- the completion through November of the monthly code review
- oversight of the upcoming Gate Survey
- the completion of the annual inventory
- The committee also noted that the EPC does its own inventory of equipment in the EPC sheds.

The Publications Committee met on January 7 to discuss:

- lessons from prior issues
- publishing software will change to Adobe InDesign
- production and editing assignments in the February issue

The Committee also unanimously passed a revision to its APP describing the format of the Board Secretary's Report. The revision was approved by the Board of Directors and is available on the Kala Point website.

The Tree Committee No December meeting.

A German Shepherd, Doberman and a Cat have died. All three are faced with God who wants to know what they believe in. The German shepherd says: "I believe in discipline, training and loyalty to my master." "Good," says God, "then sit down on my right side." "Doberman, what do you believe in?" Asks God. The Doberman answers: "I believe in the love, care and protection of my master." "Aha," said God, "you may sit to my left." Then he looks at the Cat, and asks: "And what do you believe in?" The Cat then answers: "I believe you're sitting in my seat."



Photography and Art Show

By Phyllis Wurscher

I started the **Photography Show** in 2006. It has progressed into the **Photography and Art Show** which has show-cased the amazing artistic talent we have here in Kala Point. I am retiring from putting this show on, so there will be no show this year, unless someone (or two) would like to take it over.

I feel we need new, fresh ideas. I would help with what needs to be done, the list of the latest participants, etc. I am hoping that someone will keep this show going, as it has always been well attended and fun for me, the participants and viewers. It gives both the professional and non-professional artist a way to show their work to their friends and neighbors here in Kala Point.

If you are interested, please contact me at pjwurscher@gmail.com.

Kala Point Recurring Clubhouse Events

Board Meeting: Second Tuesdays at 1:00 p.m.

Let's Have Lunch: First Tuesdays at 11:30 a.m.

TGIF: Fridays from 5:30 to 7:30 p.m. BYOB & glass.

Bridge: Mondays at 11:00 a.m.

Reading Group: Meets second Wednesday of each month in Fireside Room, 3:00-5:00 pm. Contact Maxine Peirson, 971-361-2365 for more information

Resolutions

Most resolutions that are considered by the Kala Point Board are brought forth by board members; however, resolutions can be submitted by any Kala Point member. Member-submitted resolutions must be completed and submitted to the KPOA Office by 12:00 p.m. on Friday February 15, 2019. The process for these resolutions is outlined in our Governing Documents, APP IX-2, Elections Committee Procedures #13. You must complete the forms labeled Exhibits A-1 and A-2 for each resolution.

Calling All Chefs for the Great Kala Point Chili Cookoff

By Michael Machette, EPC

It's that time again! Our annual Potato Bake fundraiser for Jefferson County Fire-Rescue is scheduled for Saturday, March 23, from 5 to 8p.m. at the Clubhouse. This year's host, the Kala Point Emergency Preparedness Committee (EPC), has challenged all cooks in Kala Point to a Chili Cookoff in conjunction with the Potato Bake. So, dust off your favorite chili recipe - c'mon, we know you have one! Sign up today to compete in the Great Kala Point Chili Cookoff.

Once again, this year, we'll have two chili categories:

- **Traditional Firehouse-Style Chilis.** You know, red, meat/beans, with some heat. We need 3-4 entries (a crockpot-full each) of these chilis, preferably homemade.
- **Gourmet-Style Chilis.** This is the kind most of us like to create — pork, chicken, green chili, elk, steak, with porter or ales, etc. Last year Bill Conklin won with his Chocolate Stout Chili. Go wild, make something a modern well-fed caveman (or cave lady) would enjoy. We need 3-4 crockpots of these chilis, too.

There are more good chefs in Kala Point than I know. So, if you have a friend or neighbor that you'd like to engage in the GKPC, pass along this message. If you want to enter, just **send me a note** (re: Chili Cookoff) and the category you want to enter. When I get four chefs signed up for each of the two categories, I'll cut off entries and start making a back-up list. So, chefs, don't wait, time is of the essence. Reserve your spot now!

A reminder about why this event is fun and important. The Potato Bake has been going on for years in Kala Point, as a fundraiser for EJFR. All proceeds, including liberal donations from our Kala Point members, go to this dedicated team of first responders — fire fighters and EMTs - who serve our community so professionally and so well. Last year,

EJFR was able to purchase a stair chair with the funds raised by Kala Point. Our friends at EJFR are an important resource; please help us support this worthy cause.

Questions:
Michael Machette
Machette1550@gmail.com



Help the Next Generation Succeed by Sharing Your Skills and Talents

By Suzanne Eggleston

Mentors and tutors of all types are currently in high demand in our local schools. Teachers are attempting to meet this demand through Skillmation, a relatively new local organization that connects area students and young people with individuals who have specific areas of expertise or training.

“We think Kala Point... might be a rich field of smart folks willing to offer their skills [as well as] a great way for Kala Point lifelong learners to pursue a passion,” says Martha Trolin, cofounder of Skillmation and a member of its board. “Kala Point residents have much expertise and experience to offer.”

According to Trolin, the opportunities for volunteering are vast, with time commitments ranging from a one-time presentation, to meeting with young people once a month or twice a week. You might choose to tutor a tenth grader in geometry or a first grader in reading, or serve as a ninth grade community mentor. Or perhaps you'd rather talk to high school students about what you do or did or help a young entrepreneur in the area succeed in his or her business.

Blue Heron currently needs help tutoring sixth grade students in mathematics. The program runs eight weeks from January 30 through March 20 on Wednesdays between 12:50 p.m. and 2:50 p.m.

If mentoring or tutoring sounds like something you'd like to try, visit www.skillmation.org and make a profile. Trolin advises to make sure to check “willing to work in the schools.” Your profile is where can share your skills and talents and help the next generation succeed. Then contact martha@skillmation.org to discuss different program opportunities. You decide how much time you want to give.

You might also be interested to check out the after school, vacation or summer programs for your child or grandchild on the **Youth Experience Site (YES)** at www.skillmation.org.



Neighborhood Ads

Neighborhood Classified Ads cost only \$0.10 cents per word. Please pay at the Kala Point Office when you submit your ad.

Hilary Newell
 Writer, editor, proofreader
 508-221-0211
 mintonnewell@gmail.com



MONDAYS JUST GOT BETTER!
 LIVE ROTATING MUSIC EACH MONDAY
 ENJOY HAPPY HOUR SPECIALS ALL NIGHT!
 \$6 HOUSE RED OR WHITE WINE
 \$1 OFF DRAFT BEER
 \$6 WELLS
 10% ALL APPETIZERS

310 HADLOCK BAY ROAD
 PORT HADLOCK WA 98339
 360-390-4017
 WWW.OLDALCOHOLPLANT.COM

HAPPY HOUR

Prime Office Space Available
 At the entrance to Kala Point
Kala Point Professional Building
 Contact: Geoff at 360-621-7419
 260kppb@gmail.com

Check out what our customers say:

 5 Star Customer Rating
 READ REVIEWS




Window Cleaning **Gutter Cleaning**
Pressure Washing **Softwash Roof Cleaning**

Serving Clallam & Jefferson Counties
 Local - Professional & Insured - Contractor License #HIGHLO*823LJ

Call Today for your Free Quote **360-633-3707**
www.HighlandOlympic.com

FIRST FRIDAY AT THE BOAT SCHOOL

See firsthand our tradition of craftsmanship, exciting growth, and changes at the school. Join us at 3:30 pm on the first Friday of each month to tour the Port Hadlock Heritage Campus.

42 N. Water St. Port Hadlock, WA

2018 DATES

FEB	MAR	APR	MAY	JUNE	JULY	AUG	SEPT	OCT	NOV	DEC
2	2	6	4	1	6	3	7	5	2	7

All American



We Come To You!

- Foam Bath
- Spot-Free Rinse
- Licensed, Bonded, and Insured

Mobile Rv & Auto Detailing
 AAMDSELLC@gmail.com
 (360)316-9917

Quality & Service at Competitive Prices

**Tile, Carpet, Hardwood, Bamboo Flooring,
Financing Available O.A.C.**

We have Furniture, Mattresses, Recliners & more!



PENINSULA

FLOORS & FURNISHINGS

**2405 West Sims Way • Port Townsend
360-385-0945**

Do You Need a Little Help?

- ♥ Assistance with Personal Care
- ♥ Transportation
- ♥ Meal Preparation
- ♥ Errands & Household Chores



Peninsula Homecare Cooperative

A Caregiver-Owned Homecare Agency

360-385-9664

www.phc.coop

REIMAGINE LIFE



Independent Living at the Old Alcohol Plant Hotel

Join a community of people who appreciate their independence and enjoy the support of a team of professionals who care about each guest.

At our historic waterfront estate, you'll find life is a breeze with our fun and affordable amenities package. Enjoy meals prepared for you daily by our restaurant, Spirits Bar & Grill, using fresh local ingredients and seasonal produce from our abundant Kitchen Garden.

The fitness center, art gallery and reading area are all open 24 hours per day. There are scheduled exercise classes and many interesting and engaging activities in arts, music, and community life. The Old Alcohol Plant Hotel is a wonderful place to call home.

**Call Stephanie Galloway at (360) 390-4017
to schedule a tour of your new home today!**

Residential Amenities

(Just a sample - inquire for full list and pricing)

- Fully Furnished (or bring your own treasures)
- Housekeeping & Linen Service
- Mountain & Water Views
- Meals from Spirits Bar & Grill
- Wi-Fi and Cable TV-Equipped
- Art Gallery ■ Art Classes and Workshops
- Fitness Center ■ Yoga, Spin, & Exercise Classes
- Landscaped Private Grounds and Gardens

310 Hadlock Bay Road, Port Hadlock, WA, 98339 www.aldalcoholplant.com

Kala Pointer Newsletter

Kala Point Owners' Association

1760 Kala Point Drive
Port Townsend, WA 98368

Winspear Construction Services LLC

- General Contractor - Small and Medium Projects
 - Painting and Deck Refinishing & Repair
 - Interior Hardwood Installation, Repair and Refinishing, including Stairs
 - Carpentry, Pressure Washing and more...
- Free Estimates - Licensed, Insured and Bonded

Contact David at 360-797-5254
dawinspear@gmail.com
Contractor #WINSPCS830LB

Sudden Clarity

Professional Window Cleaning

Jackson Mifsud – Lukas Hubbard

(360) 643-0202 (360) 531-3651

Free estimates and demonstration window

Licensed and Insured

5% of wages donated to

Habitat for Humanity Jefferson County

PUGET SOUND EXPRESS
Guaranteed Whale Watching
PugetSoundExpress.com



Serving Jefferson & Kitsap Counties

Specializing in expert pruning
Hazardous tree removal • Chipping • Free estimates



Dan Field
PN6880A

Field's Tree Care LLC

Licensed • Bonded • Insured

FIELDTC876DH

fieldstreecare@gmail.com

360-994-0166

ecoclean pressurewashing services

- driveways • sidewalks • decks & more

GENE YOCUM
geneyocum@gmail.com

360.531.4821



Fox's Draperies

Shutters, Blinds, Etc.
foxsdraperies@hotmail.com
www.Foxsdraperies.com

Jon Fox

Owner
63 Cedarview Drive
Port Townsend, WA 98368
2530 Mercantile Drive, Suite G
Rancho Cordova, CA 95742

360.379.2548

916.743.6837 (Cell)

888.441.5672 (Toll Free)

360.379.4929 (Fax)

WA Reg.#: FOXDRD*959CO • CA LIC.#: 543526