



# Kala Pointer

The Kala Pointer is a Monthly Publication of the Kala Point Owners Association

December 2019

## President's Message

Joe Englander, [kpoaboard\\_englander@kalapoint.org](mailto:kpoaboard_englander@kalapoint.org)

### 'Tis the Season...

December is the month of holidays. No matter what your heritage or religion, throughout the world, December is the month for celebrations and gift giving. 'Tis better to give than to receive. We Kala Pointers have many ways to give monetarily: Jefferson County Food Bank, Toys for Tots, and our own Employee Appreciation Fund, for example.

Some of the people who work in the background to make your life better and easier are the employees of our Association. Now is the time to really thank them. Please make a monetary gift of thanks to our staff by writing a check to KPEAF. Mail it to KPEAF, 1760 Kala Point Drive, Port Townsend, WA 98368; or drop it off to either Patti Biazzo, 295 Foxfield Drive, or Susie Gorski, 51-2 Seaview Court. The deadline for contributions is Monday, December 16.

December is the month when karmic accounts are balanced and settled, too. We make up for not having been particularly generous throughout most of the year by being especially generous in December. Of course, the ideal is pay-as-you-go. It's a goal to be generous and giving throughout the year. If charity begins at home, then so should generosity. One way to do that is to give generously of your time right here at home in Kala Point. Some call that kind of giving, giving back. There is no question that Kala Point looks and feels the way it does because of the many volunteers in committees who act for your benefit to keep Kala Point humming throughout the year. The **Kala Kalendar** lists all the meeting times for every committee and every committee is listed on the second page of this *Kala Pointer*.

**Continued on page 5**

## In This Issue

Board Report.....	2
Budget Report.....	3
Lot Setbacks .....	5
Employee Appreciation.....	6
Calendar of Events .....	8-9
Gardening Tips .....	11
Committee Reports .....	14-15
Know Your Neighbors .....	18
New Homes .....	20
Morning Walkers.....	22

## Don't Miss Our Holiday Events

To Help Children .....	10
Homes for the Holidays .....	12
New Year's Eve .....	16

### December Kala Pointer Staff

*Editor:* Mike Burk

*Copy Editors:* Suzanne Eggleston,  
Angela George, Hilary Newell,  
Gail White

*Chair:* Suzanne Eggleston

*Secretary:* Hilary Newell

*Advertising:* Gail White

### December Contributors

Suzanne Eggleston

Joe Englander

Angela George

Nancy Leeds

Joanne Levine

Frances Loubere

Michael Machette

Carolyn McNulty

Dale Moses

Scott Rovanpera

Bob Segui

Diane Slovik

Gary Obermeyer

Bob Winfrey

*Masthead Photo:* Bob Segui

### January Newsletter Deadline

Deadline for the January 2020 issue of the *Kala Pointer* is December 20.

**Submit your articles to:**

**[YourKalaPointer@kalapoint.org](mailto:YourKalaPointer@kalapoint.org)**

Our *Letter to the Editor* policy can be found at

**[KalaPoint.org](http://KalaPoint.org)**

**2019–2020 Board of Directors**

Click names to Email

President **Joe Englander**Vice President **Kim Titus**Secretary **Dale Moses**CFO **John Oliveira**Director **Jean Erreca**Director **Tom Gillespie**Director **Dan Kimball**Director **Steve Reed**Director **Scott Rovanpera**

Email the Entire Board

**2019–2020 Committees**Architectural, **Caroline McNulty**BMAC, **TBA**Elections, **TBA**

Emergency Preparedness (EPC),

**Anne Englander, Joyce Wenz**Finance, **John Oliveira**Grounds, **Keith Larson**Internal Controls, **David Harrah**Personnel, **Joe Englander**Publications, **Suzanne Eggleston**

Social Plus,

**Char Quandt, Diana Zinn, Patti Biazzo**Tree, **Mark Kleinman****What Happened at the November 2019 Board Meeting?****Dale Moses, KPOA Board Secretary**

Your KPOA Board of Directors met at 1 p.m. on Tuesday, November 12, 2019, in our KPOA clubhouse. All nine Board members were present and there were 15 people in the audience. Documents were available prior to the meeting on the KPOA website (at “*Board Meeting Files*” under the “*Members*” pull-down menu). Items from this meeting included:

- One input came from the audience at the beginning of the meeting (discussing the recent appeal for a tree action).
- There were over 50 correspondence items that came to the Board since the last meeting, many concerning the storage lot price list. Several others were reviewed (computer hack, website listing committee minutes, car decals). A list of all inputs is available [here](#).
- Keith presented the finished Reserve Study, prepared by our consultant, and the Board voted to accept it for action. You can read it [here](#).
- The Finance Committee is exploring the overhead or indirect costs to ascribe to any particular budget line item. These additions may be in the neighborhood of 18% additional.
- All of our committees need additional members.
- The new Strategic Planning committee is coming together to review long-term issues.
- Committee reports and a PUD report were presented.
- Member inputs at the end of the meeting included a discussion on a recent Architecture Committee case and mention of the third Town Meeting on the Cassandra Project.

The Board adjourned at 3:45 p.m. to go into Executive Session for a legal matter and a personnel issue. If you would like to learn more about this Board meeting, feel free to listen to the recording of the meeting (available from the office) or send an [email to the Board](#) on a specific topic. ❄️

The Kala Point community is a common-interest residential homeowner association (HOA). When purchasing or building within Kala Point, homeowners agree to follow the HOA's governing documents, which include: Conditions, Covenants and Restrictions of Record (CC&Rs); Rules and Regulations; By-Laws; and detailed Administrative Policies and Procedures (APPs). APPs are Board-enacted rules. The protective umbrella of these governing documents works in the best interest of all homeowners ensuring higher standards of neighborhood appearance and enhancing the collective value of the homes.

## What Happened at the Board's October Budget Review Meeting?

**Dale Moses, KPOA Board Secretary**

Your KPOA Board of Directors met at 10 a.m. on Tuesday, October 15, 2019, in our KPOA clubhouse to review the proposed 2020 budget. There were 55 people in the audience – perhaps a new record! A quorum of six Board members was established with Steve Reed, Dan Kimball and Jean Erreca absent. The proposed 2020 budget documents were available prior to the meeting on the KPOA website (under the “Members” pull-down menu at “Board Meeting Files”).

Since it was obvious that most of the attendees wanted to talk about the proposed rate hikes for storage lots, the meeting started with John Oliveira, our CFO, discussing why he felt the rates approved at the Board Meeting on October 8 were inappropriate. He also discussed the proposed rate hike and why the Finance Committee had thought the rates should be significantly increased. For the next two hours there were audience inputs and many questions. These included:

- The history of rate increases
- KPOA costs to operate both lots (approximately \$15,000/year) and cost recovery thinking
- The current four categories of lots (although there are over a dozen sizes)
- Rates vary significantly on a linear foot basis
- Spaces are an amenity but not available to all of us (there are only 133 spaces)
- Water and electricity are only available to some spaces
- The much higher costs for rentals outside Kala Point
- How to better manage the two-year waiting list
- How to better manage the derelict vehicles currently in some spaces
- Whether or not a profit should be made
- Whether KPOA should charge anything at all!

Finally, the Board voted to shift to a running footage cost basis to make things equal and to budget \$15,100 for revenue from storage lots for 2020. Other details would be worked out in the future.

After taking a break, the audience had shrunk to 11 attendees and the Board reconvened to review the budget and forward it for member approval. The original revenue projection of \$38,628 for storage lots was reduced to \$15,100. This resulted in an increase in assessments compared to the initial budget. The Board reviewed the anticipated assessments (the revised

budget can be found [here](#)).

Finally, the Board updated the ballot wording for the Cassandra Project member voting to allow for both a yes (approval) or no (not approved) vote. We also discussed the process for budgeting if the vote turned out a “no” majority.

The Board adjourned at 4:20 p.m. To learn more about this Board meeting, feel free to listen to the recording of the meeting (available from the office) or send an [email to the Board](#) on a specific topic. ❄️

## The Winter Solstice

*Found by Nancy Leeds*

The winter solstice time is no longer celebrated as it once was, with the understanding that this is a period of descent and rest, of going within our homes, within ourselves and taking in all that we have been through, all that has passed in this full year which is coming to a close. Like nature and the animal kingdom around us, this time of hibernation is so necessary for our tired limbs, our burdened minds.

Our modern culture teaches avoidance at a max at this time: alcohol, lights, shopping, overworking, overspending, comfort food and consumerism.

Yet the natural tug to go inwards, as nearly all creatures are doing, is strong and the weather so bitter that people are left feeling that winter is hard, because for those of us without burning fires and big festive families, it can be lonely and isolating. Whereas, in actual fact, winter is kind, she points us in her quiet soft way toward our inner self, toward this annual time of peace and reflection, embracing the darkness and forgiving, accepting and lovingly bidding goodbye to the past year.

Winter takes away the distractions, the buzz, and presents us with the perfect time to rest and withdraw into a womb-like love, bringing fire and light to our hearth.

Then, just around the corner, the new year will begin again, and like a seed planted deep in the earth, we will all rise with renewed energy once again to dance in the sunlight.

Life is a gift ❤️ — a Happy winter to you all. ❄️





# Rotary Club of Port Townsend, Washington, USA

PROUDLY PRESENTS ITS 17th ANNUAL

## Holiday Greens Fund Raiser

Wreaths and Door Swags from the Olympic Peninsula

For 90 years, Rotarians have been on the front lines of improving the quality of life for our community. Last year, our wreath sales supported local programs that give shelter to people who are homeless, allow disabled people to spend a week at camp, help traumatized children the opportunity to heal, and provide suicide prevention programs to teens.

With your wreath purchase, you will help us continue this important work again this year.

### Rotary Club of Port Townsend 2019 COMMUNITY GRANTS

**Bayside Housing:** Sunday Community Meal Program operating and staff expenses **Brinnon Parks and Recreation:** Lifeguard & transportation for 8 swim days for Brinnon children at Pleasant Harbor pool. **Community Wellness Project:** 10-week Farm to School pilot Program for grades 3-5 in Chimacum **ECHHO:** Transportation for under 60's Program **Jefferson County Pride** Support center for LGBTQ teens **Jefferson Teen Center:** General operating funds **JUMP!:** Playground equipment for people with disabilities fund **Key City Players:** Replacement of stage deck **Northwind Arts Center:** Matching funds for Arts to Elders Program at senior living centers (compensation for artist **Port Townsend Marine Science Center:** Scholarships for 6 children to attend summer camps **Port Townsend School of the Arts:** Art materials for youth programs **PT Summer Band** Purchase of music for free concerts **St. Vincent de Paul:** Funds for emergency needs for individuals and families **The Recycler:** Expansion of Bicycle Education Program **TOTAL: \$44,000.00**



### Mixed Wreath - 22 inch diameter

Freshly cut noble fir is the base for this stunning evergreen wreath, adorned with blue-berried juniper, incense cedar, ponderosa pine cones & topped with a festive bow.



### Swag 28 inch in length

Large noble fir boughs support this delightful swag, fanning beautiful boughs of cedar accented with blue-berried juniper, ponderosa pine cones and a holiday bow



For further information contact Sheldon Spencer, 209-484-0099

Delivery begins 11/26  
 \$30.00 for either Wreath Or Swag  
 Order by contacting a Rotarian  
 or purchase on line at  
[www.porttownsendrotary.org](http://www.porttownsendrotary.org)

### Continued from page 1

All committee meetings are open to KPOA members, so pick one and try it out. See if what they do is interesting or if you could lend them an expert hand to make them even better. Every committee in Kala Point would be happy to have you join. The committees are the very definition of generosity: no one reaps any direct benefit, everything they do is for the benefit of others.

Finally, a reminder. Holiday weather is frequently inclement. If you see our crew working to clear the streets, give them space so their progress isn't impeded and your safety isn't affected by flying debris. Stopping and restarting heavy machinery can be difficult and hazardous. So, if you see our crews, give them space and give them thanks.

Wishing you happy and healthy holidays, all! ❄️

## A Reminder About Lot Setbacks

*The Architectural Committee*

The CC&Rs were amended in 2018 by a membership vote to specifically state that

***No vehicles shall be parked within setbacks on any lot except on approved driveways.*** (See Article IV Property Rights, Section D, Residential Lot Restrictions.)

This was in response to the increasing use of the 10-foot setback along the sides of lots for parking vehicles. This setback is intended as a buffer of undeveloped space, either left natural or planted with vegetation.

The intent was to give owners a buffer of natural space and privacy from neighboring homes. Kala Point setbacks are double the size required by Jefferson County. The hope was less need for fencing and to maintain the wooded nature of the community. When homes are constructed, the Architecture Committee monitors these areas to ensure that nothing is built in the setbacks. Any vegetation can be planted, and pathways may be installed. But vehicles must be parked on approved driveways. Gravel placed in the setback is not an approved driveway or parking surface. It's like parking a car on your lawn and that too is not an approved driveway. See Appendix E of the Architecture APPs for exact setback guidelines. ❄️

## Hannah, I'll Miss You

*Carolyn McNulty*



She was a wonderful companion, loved everyone she met, guarded the gate when I was gardening and loved her time on the KP beach. I will miss her terribly. She was nine and left too soon.

## Kala Point Supports Local Children

Every year the less fortunate children of Jefferson County experience the joy of Christmas thanks to a partnership between **Toys for Tots**, the **Port Townsend Kiwanis Club**, **Christmas for Children** and the **Port Townsend Sunrise Rotary Club**. Last year a total of 804 local children, from low-income families were the delighted recipients of seasonal gifts through these programs.

The residents of Kala Point have always given generously to both the Toys for Tots and Christmas for Children programs. Please consider donating again this year. **A flyer containing instructions for your donation is on page 10.** Thank you for keeping the spirit of the season alive for the children of our area. ❄️



# K.P.E.A.F.

## Kala Point Employee Appreciation Fund 2019

For many years, volunteers have collected gifts of money from the Kala Point community and have distributed the gifts to our employees in December. The fund is a way to thank employees for the excellent service they do in maintaining and administrating our neighborhood. Kala Point employees include:

- ★ **Keith Larson**, General Manager
- ★ **Daniella Brockmeier**, Administration
- ★ **Felice Thompson**, Administration (new)
- ★ **Shane Ryan**, Maintenance
- ★ **Tim Wardleigh**, Maintenance
- ★ **Dion White**, Clubhouse Attendant
- ★ **Phil White**, Clubhouse Attendant
- ★ **Connie Morgenson**, Clubhouse Attendant

If you would like to join in this expression of appreciation, please make your check payable to "K.P.E.A.F" and drop off or mail it **before Monday, December 16, 2019**, to:



You may also drop off checks at:

- Patti Biazzo**, 295 Foxfield Dr. (360.385.3262)
- Susie Gorski**, 51-2 Seaview Ct. (907.317.5562)

### 10 TOP DOG TOXINS

- |                                    |   |
|------------------------------------|---|
| 1) Chocolate                       | 6) Anti-depressants                           |
| 2) Mouse & rat poisons             | 7) Acetaminophen                              |
| 3) Anti-inflammatory medications   | 8) Vitamin D overdose                         |
| 4) Xylitol (sugar free gum & more) | 9) Stimulant medications (e.g., for ADD/ADHD) |
| 5) Grapes & raisins                | 10) Fertilizers                               |

 **PET POISON HELPLINE®**  
**844.492.9842**  
 petpoisonhelpline.com

**SAVING PETS' LIVES 24/7**

Please be advised there is a per incident fee.

### 10 TOP CAT TOXINS

- |                                      |   |
|--------------------------------------|---|
| 1) Lilies (Lilium species)           | 6) Anti-inflammatory medications              |
| 2) Spot-on flea/tick dog medications | 7) Mouse & rat poisons                        |
| 3) Household cleaners                | 8) Stimulant medications (e.g., for ADD/ADHD) |
| 4) Anti-depressants                  | 9) Onions & garlic                            |
| 5) Essential oils                    | 10) Vitamin D overdose                        |

 **PET POISON HELPLINE®**  
**844.492.9842**  
 petpoisonhelpline.com

**SAVING PETS' LIVES 24/7**

Please be advised there is a per incident fee.

## Beach Watch Final Report

Gary Obermeyer

Between December 18, 2018, and September 2, 2019, a self-organized group of your Kala Point neighbors conducted systematic observations of what was happening at the beach. We did so in response to claims that caused some to believe that the beach was being overrun by outsiders engaging in bad behavior (and worse). Eighteen of your KP neighbors volunteered. We documented the number of vehicles in the parking lot, the license plate numbers of any violators (vehicles without a sticker or pass), and any other notable activity (including weather reports). Over the 258 days, we made 1,234 observations (an average of 4.8 observations/day).

A total of 4,150 vehicles were observed, an average of 3.36 vehicles/observation. On only two occasions was the parking lot completely full. Over the 8 months, we observed a total of 393 violators; 75% had Washington plates; 7% were Oregon vehicles; and the remainder were from 11 different states (AK, AZ, CA, ID, MN, MT, NV, PA, SD, UT, WI – most likely timeshare guests). Other than one tagging incident, there were no reports of vandalism.

Our four-person analysis team (with a professional statistician) looked at the data monthly, analyzed it, and reached these conclusions:

- We randomly tracked violators leaving the beach parking lot and noted whether they drove out the main gate or to a Kala Point address. Standard analysis of those observations indicated the high probability that the parking violators were Kala Point residents or guests.
- Reinforcing this conclusion, after the hang tags were issued, there was a significant drop in the violation rate: from 10.3% between December and June; down to 6.2% through July and August.
- The threat of towing appears to have had little impact on the percentage of violators.
- We were not able to make effective/definitive comparisons between weekdays and weekends because of all the variables related to the operation of the gate.

The Beach Watch had an additional benefit. It turned out to be a community-building activity. We got to know many KP residents (and their dogs) who visit the beach on a regular basis; many of whom attended the Monday afternoon beach parties that we hosted through July and August. The camaraderie that began at the beach sparked an interest in continuing potluck gatherings at

the Clubhouse or in residents' homes. Our community is stronger and friendlier as a result of the beach watch.

Weekly Summaries, by week, of the collected data will soon be available on the Kala Point website.

If you have questions, contact Gary Obermeyer:  
Text: 503-539-6285 or email: [obee@mac.com](mailto:obee@mac.com) ✨

## Kala Cares In Memoriam

### Don Brenner



We will provide more information  
about services as it becomes available.

## Bluff Management Advisory Committee Tree Request Workshop

Bob Winfrey

The Bluff Management Advisory Committee (BMAC) will be offering a Bluff Tree Request Workshop on Wednesday, January 22, from 1:30 p.m. to 3 p.m. in the Kala Point Fireplace Room. This workshop will prepare residents of Kala Point's North Sector for the 2020 Bluff Tree Request cycle (opens February 1 and closes February 28, 2020). The North sector extends from Baycliff Place north to the end of Kala Heights Drive.

The agenda for the 2020 BMAC Workshop will include the following subjects:

- BMAC Tree Request Process/Timelines
- Overview of Jefferson County Shoreline Management Plan and Critical Areas Ordinance
- Tree request options for different vegetation (shrubs, deciduous trees, conifers)
- Kala Point Geo-Technical Results for 2018 and 2019
- BMAC Tree Request Recommendations Summary & Questions

If you have questions or would like more information, please contact BMAC chair Bob Winfrey at [rjwinfrey@gmail.com](mailto:rjwinfrey@gmail.com). ✨

# December Calendar of Events Suzanne Eggleston

## December 1

### **Santa Paws Holiday Market for Shelter Animals.**

Craft and art vendors, fabulous raffle items and photos with Santa with your pets. Please bring pets either on leash or in carrier (or fishbowl). Sponsored by Humane Society of Jefferson County. **TIME:** 11 a.m.–6 p.m. **COST:** Free. **LOCATION:** Tri-Area Community Center, 10 West Valley Rd, Chimacum. **CONTACT:** [beataliebetruth@yahoo.com](mailto:beataliebetruth@yahoo.com), [hsjewa.org/](http://hsjewa.org/)

## December 5

**UFO Detective: James Clarkson lecture.** A veteran UFO investigator looks back over 30 years of more than 700 UFO investigations in the Pacific Northwest. He is the author of *Tell My Story: June Crain, the Air Force & UFOs* as well as *The Westport UFO Crash Retrieval Event*. **TIME:** 7–8 p.m. **COST:** Free. **LOCATION:** Port Townsend Library, 1220 Lawrence St. **CONTACT:** [ptlibrary@cityofpt.us](mailto:ptlibrary@cityofpt.us), 360.385.3181, [jamesclarksonufo.com/](http://jamesclarksonufo.com/)

## December 6–8

**Festival of Lights Gift & Cookie Bazaar.** A thousand hand-crafted cookies, holiday crafts from local vendors, and a silent auction to benefit UNITY of Port Townsend and the OLYCAP homeless winter shelter. **TIME:** 12–6 p.m. on Friday; 10 a.m.–5 p.m. on Saturday; 1–5 p.m. on Sunday. **COST:** Free. **LOCATION:** Unity Spiritual Enrichment Center, 3918 San Juan Ave. **CONTACT:** [info@unitypt.org](mailto:info@unitypt.org), Ann Dowie at 360.344.2338, [unitypt.org/](http://unitypt.org/)

## December 7

**Sing-Along Handel's "Messiah."** Sing the choruses from Handel's "Messiah" in this fun, casual event — or just come and listen. Scores will be provided; feel free to bring your own. **TIME:** 4–5:30 p.m. **COST:** Donations accepted; proceeds will go to local charities. **LOCATION:** First Presbyterian Church, 1111 Franklin St. **CONTACT:** [sarah@fpcpt.org](mailto:sarah@fpcpt.org), 206.747.5126, [fpcpt.org/](http://fpcpt.org/)

**Port Townsend Symphony Concert: *The Grand Finale*.** Experience "Radetzky March" by Strauss with Phil Andrus conducting, "Nutcracker Suite" by

Tchaikovsky and "Violin Concerto in E minor" by Mendelssohn with soloist Myroslava Khomik. **TIME:** 7:30–9 p.m. **COST:** Free; donations welcome. **LOCATION:** Chimacum High School, 91 West Valley Rd. **CONTACT:** [contact@ptsymphony.org](mailto:contact@ptsymphony.org), [ptsymphony.org/](http://ptsymphony.org/)

## December 7–8

**33rd Annual Chimacum Arts and Crafts Fair.** This iconic, high-quality, destination event draws people from around the region. It showcases the spirit of East Jefferson County and Chimacum High School while raising money for school programs, supporting the local makers' economy, providing a marketplace for youth and nonprofit program fundraisers, and building community. **TIME:** 10 a.m.–4 p.m. **COST:** \$3. **LOCATION:** Chimacum High School, 91 West Valley Rd. **CONTACT:** [chimacumarts.com/](http://chimacumarts.com/)

## December 8, 11, 15, 18, 22, 25, 29

**Forest Bathing & Contemplative Walking.** Wear sturdy shoes, layer clothing, and leave the electronics and pets behind as you experience forest bathing ("Shinrin Yoku"), a form of contemplative walking in a wooded area. A Olympic Peninsula Mindfulness guide will lead the way. Meet up about 15 minutes before the scheduled time in front of the Fort Worden Commons building. **TIME:** 9–11 a.m. **COST:** Suggested donation of \$10 to go to Friends of Fort Worden. **LOCATION:** Fort Worden State Park Commons, 200 Battery Way. **CONTACT:** [ellen@OlympicPeninsulaMindfulness.com](mailto:ellen@OlympicPeninsulaMindfulness.com), 360.316.6544, [OlympicPeninsulaMindfulness.com/](http://OlympicPeninsulaMindfulness.com/)

## December 12–14, 19–21, 26–28

**Spirit of the Yule musical.** Port Townsend's holiday musical tradition returns with all the treasured memories along with fresh and exciting updates. **TIMES:** 2:30 p.m. on Dec. 14, 21 and 28; 7 p.m. on Dec. 12, 13, 19, 20, 26 and 28. **COST:** \$24–\$29. **LOCATION:** Key City Public Theatre, 419 Washington St. **CONTACT:** [info@keycitypublictheatre.org](mailto:info@keycitypublictheatre.org), 360.379.0195, [keycitypublictheatre.org/](http://keycitypublictheatre.org/)



## December Calendar of Events

### December 14

**PT Vineyards: Taste the Season.** Mingle with friends and family while enjoying the traditional German holiday drink of Glühwein, hot cider, music, crafts for kiddos, games and more. The Discovery Room event pavilion will be set up to view and shop the Vineyards' limited-release seasonal holiday gift boxes. **TIME:** 1–5 p.m. **COST:** No entry fee. **LOCATION:** 2640 W Sims Way. **CONTACT:** [events@porttownsendvineyards.com](mailto:events@porttownsendvineyards.com), 360.344.8155, [porttownsendvineyards.com/](http://porttownsendvineyards.com/)

**Open Parlor Tours.** Step back into a quieter time for the holidays and experience the simple joys of the season. Tour beautifully decorated historical buildings and homes with historically costumed docents, seasonal music and holiday treats. **TIME:** 1–4 p.m. **COST:** \$15. **LOCATION:** Self-guided tours start at the Old Consulate Inn, 313 Walker St. **CONTACT:** [info@brass-screw.org](mailto:info@brass-screw.org), [op-s.net/](http://op-s.net/)

**Big Brass Yule Ball.** The Brass Screw Confederacy and Olympic Peninsula Steam invite you to the American Legion Hall where the halls are decked, the hosts are jolly, and the fruit cake is plentiful. Dress up in Victorian, Steampunk, fancy dress or blue jeans and enjoy an evening of dancing to the Olympic Express Brass Band. Must be at least 21. **TIME:** 7–10 p.m. **COST:** \$10 in advance; \$15 at the door. **LOCATION:** American Legion Hall, 209 Monroe St. **CONTACT:** [info@brass-screw.org](mailto:info@brass-screw.org), [op-s.net/](http://op-s.net/)

### December 14, 21

**Main Street/Kiwanis Choo Choo Rides for Families.** Grab the youngsters and head downtown for rides while raising funds for PT Artscape, an organization that provides visual and dramatic arts education programs in the Port Townsend School District. **TIME:** 1–4 p.m. **COST:** Suggested donation of \$5 per person. **LOCATION:** Pope Marine Park. **CONTACT:** 360.385.7911, [ptmainstreet.org/](http://ptmainstreet.org/)

### December 15

**Third Sunday Story Swap.** Quimper Story Guild gathers for an afternoon to allow aspiring and

experienced tellers to hone their craft in a supportive, informal setting. Refreshments and Guild steering committee meeting follows the swap. **TIME:** 2–4:30 p.m. **COST:** Free. **LOCATION:** Port Townsend Public Library, 1220 Lawrence St. **CONTACT:** 360.316.9600, [facebook.com/](https://www.facebook.com/)

### December 21–22

**Paul Rogers' 7th Annual Holiday Hi-Jinx Concert.** Paul Rogers and his all-star musicians present their annual Holiday Hi-Jinx Concert featuring original yuletide tunes over two nights to raise funds for the East Jefferson County Winter Shelter. Joining Rogers will be special guests from Northern California and some of Port Townsend's finest musicians. **TIME:** 6–9 p.m., Saturday; 4–7 p.m., Sunday. **COST:** \$20. **LOCATION:** Finn River Orchard & Cider Garden, 124 Center Road, Chimacum, on Saturday; American Legion Post, 209 Monroe St., on Sunday. **CONTACT:** [progersw@gmail.com](mailto:progersw@gmail.com), 360.531.0276, [facebook.com/progersw/](https://www.facebook.com/progersw/)

### December 23–30

**Hanukkah**

### December 24–25

**Christmas Eve and Christmas Day**

### December 31

**New Year's Eve**

**Kala Point New Year's Eve Party** See page 16 ❄️

### Recurring Kala Point Clubhouse Events

**Board Meeting:** Second Tuesdays at 1 p.m.

**Bridge:** Mondays at 11 a.m.

**Exercise Class:** Monday, Wednesday and Friday, 9 a.m. Bring a mat and hand weights. If interested in attending, call AJ Laverty, 360.379.6386

**Tai Chat:** Tuesdays and Thursdays, 9–10 a.m. 24-form Tai Chi with breaks for chatting. All are welcome. Libby Nordlund, 425.273.4933, [eanordlund@aol.com](mailto:eanordlund@aol.com). ❄️



## Help us Prepare for Christmas 2019!

On November 17, Kala Point kicked off the Toys for Tots and the Christmas for Children programs. Follow the below instructions for your donation(s):

### TOYS FOR TOTS

Purchase a toy of your choice.

Drop off **unwrapped** toys by December 9 at one of the following locations:

- In the Toys for Tots Box at the Clubhouse
- In the collection bin on the front porch of Char Quandt's home at 55 Terrace Drive
- At the home of a host during the December 8 "Homes for the Holidays" Cocktail Party

### CHRISTMAS FOR CHILDREN

Select one or more ornament tags on the KP Christmas Giving Tree at the clubhouse. Tags are filled out by parents with the help of children. Each child has two tags, one for a gift they want and the other for a gift they need, such as a warm coat, shoes, boots, or school clothes. Each tag contains the age and gender of the child.

Purchase a gift requested by a child or parent.

Attach the ornament tag to the **unwrapped** gift and drop it off by December 9 at one of the following locations:

- Under the tree at the Kala Point Clubhouse
- In the collection bin on the front porch of Char Quandt's home at 55 Terrace Drive

The Christmas for Children organization will pack the donated gifts along with a toothbrush, toothpaste, a hat, a pair of gloves, socks and candy.

Thank you in advance for brightening the season for the children of our community, filling up the Toys for Tots bins, ensuring that all of the tags on the trees are selected and every child on Santa's list receives one gift they need and one on their wish list!

**Char Quandt:** Toys for Tots Chair • **Nancy and Doug Leeds:** Christmas for Children Chairs ❄️

## Thanksgiving Potluck 2019 Kudos

*Sponsored by Social Plus Committee*

Once again, the Kala Point clubhouse was a lively place on Sunday, November 10, during the annual Thanksgiving Potluck Dinner sponsored by the Social Plus Committee.



KP Neighbors and many new residents all enjoyed an abundance of great food and camaraderie.

The event was not sold out this year but, in the end, it was a great evening! We found the smaller crowd allowed for much more room to maneuver and of course more interactions among the participants. There was more than enough food to go around as well.



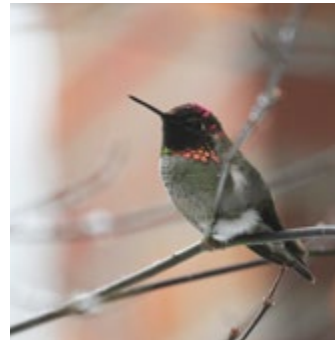
Turkeys were baked and carved by **Dick and Diana Zinn** and **Jim and Char Quandt**. Participants were assigned potluck dishes and they did not disappoint! We are blessed to have many great cooks here in Kala Point and fortunate that so many of them share their talents!

Major kudos to: **Pat Wrobel, Dan Coffman, Al Gerard, Colette Swan, Mary Foster, Marilyn Berry, Paul Fleishman, Don Shore, Diana and Dick Zinn, Pattie Horvath, Angela George, Karen Putterman**, and to all the folks who stayed to help clean up! Thanks to everyone who participated by contributing to the feast or lending a helping hand when needed to make this a successful event. We could not do this without you! ❄️

## Kala Lily's December Gardening Tips

*Diane Solvik*

There is not a lot of gardening to be done this month but there are a host of non-gardening chores!



Big trees can be pruned while they are dormant, and their sap is down. Keep the trimmed boughs for Christmas decorating. Soak them in water before you use them, so that they stay fresh for longer.

Sword and bracken ferns can be cut back

between December and February, before the new fronds begin to grow.

Holly is a beautiful addition to your seasonal decorations, but if you notice small "volunteer" holly shoots springing up in your yard, pull them up as they will all be male plants which produce no berries. Technically, holly does not have berries but, more accurately, "drupes." A drupe is a fruit that contains a seed.

Leave seed pods as food for birds during the cold months and make a lovely winter display.

To make your own organic fertilizer, cut banana peels into small pieces and add to a vessel with about a liter of water. Leave this concoction for three days, then strain into a jar. This will make a strong fertilizer, rich in potassium, phosphorus and nitrogen. You can also use onion peelings (the dry outer layer) in a similar way but only leave them overnight before straining. For an organic insect killer, take a cup of cooked rice, soak for 10 days to allow it to ferment, and strain out the liquid. This is very good for indoor houseplants.

We have had very dry weather so make sure to water your evergreens. The best way to water is by simply allowing a hose to slowly drip onto the base of the plant or tree.

Paperwhites, tulips, and other spring blooms can be "planted" in a tall vase for use inside your home. Place stones or glass beads in the base of the vase and add the bulbs, pointy side up. Fill with water to just beneath the base of the bulb. A tall, narrow container will allow the plants to stay upright and you will have lovely spring flowers before you know it. Don't forget to refresh the water.

December is a good month to spruce up your garden pots with evergreens and pansies but otherwise it's time to drink cocoa, sip wine and listen to festive music.

Happy Gardening! ❄️

# Homes for the Holidays

Sponsored by Social Plus



For the past 23 years, Social Plus has sponsored a holiday progressive dinner. This year, the Social Plus elves are changing it up a little! Instead of dinner, there will be cocktail parties with 10–12 guests to help kick off this festive time of year.

We are happy to report that several people have volunteered to host our cocktail parties. Now, get ready to have fun!

## What happens on December 8?

- Residents who have made reservations will join neighbors at 5:30 p.m. for cocktails and appetizers at the home of the cocktail host.
- Guests are requested to bring whatever they want to drink and a holiday appetizer to share for 12.
- Please consider bringing an unwrapped toy or game for the **Toys for Tots** program.
- RSVP by contacting Michael Kubec at 360.385.2041 or email [michaelkubec@gmail.com](mailto:michaelkubec@gmail.com)

## How will I know where to go?

- You will be notified by postcard or by phone as to the name and address of your host home.
- Reservations which will be limited to 80, but we will be taking a waiting list.

Take the opportunity to dress up and enjoy the company of fellow Kala Pointers as the holiday season kicks off. Newcomers to the community are particularly encouraged to participate as this affords a perfect opportunity for us to meet one another. ❄️

## Kala Point Women: *Let's Keep Moving!*

Exercise workouts Monday, Wednesday and Friday mornings 9–10 a.m. in the Clubhouse. We use low-impact DVDs with strength training, hand weights, and stretches for seniors. Join us! Questions? Contact AJ Laverty at 360-379-6386 or anyone in the group. ✨

### KPOA Computer “Hack” What's It All About?

**Dale Moses, Board Secretary**

Over the years, Kala Point has gone through a number of changes and improvements in our computer and internet protocol. We are continuing to make improvements and gain more flexibility but still guard against compromises.

This past spring, we hired a computer guru to review our KPOA website that had been installed over the previous several years. He looked into things and discovered some susceptibilities that he considered worth repairing that had been there all along. We told him to go ahead but we didn't really know what the cost might be because neither he nor we knew what he might find.

As he dug into the website, he also discovered some disturbing “footprints” attributable to outsiders. They had captured some of our Board members' official email addresses and sent threatening emails demanding payment. We hadn't known that these came from our own website. They had sent several fraudulent bills to us for payment. They had read some older documents (minutes of meetings, lists of committees, etc.) although no damage was done to these records. It also appeared that our website section allowing owners to sign up for the *Kala Pointer* and other emails, was also open for an outsider to sign up.

Based on these discoveries, we decided we needed to stiffen our defenses and set up more isolation for the site. We did not find any indications of compromises to any property ownership records, or other KPOA data, nor any indications that there might be damage to any owners' personal computer. The only compromises were to our KPOA website. We are not aware of the outsiders' identities and it may have been someone outside the United States. We are still working on protecting the

website and have more changes we need to make.

That's about it. Was this all a “hack”? Perhaps, but it seemed limited to the examples given here. Our machines have been available to us all along, we haven't lost any data, and we don't think any of our owners have been affected. Our budget for Information Technology services for 2019 had initially been \$2,500 plus roughly \$10,000 (from our Reserve) for new hardware replacement that we planned long ago. This spring we also started paying a monthly service fee to this same guru of approximately \$1,800/month. Most of this expenditure went toward software updates and routine changes to our systems that were needed. Although some of that monthly fee went toward his work on the “footprints,” we still had to pay about \$5,000 more for specific troubleshooting and corrections. So, obviously we spent much more than the original \$2,500 budget for IT services.

We have increased our IT budget for 2020, expecting that we will continue hardening our systems, especially since the world keeps upping the ante for protecting such investments. Bottom line: We discovered the problems because we decided to spend money to go looking, not because we had problems. We are glad we did this looking and we'll keep looking in the future. ✨

## *My Diet Facts*

*Found by Nancy Leeds*

**My goal for 2019 was to lose just 10 pounds.  
Only 15 to go.**

**I ate salad for dinner. Mostly croutons and tomatoes. Really just one big, round crouton covered with tomato sauce... and cheese.  
Fine! It was a pizza. I ate a pizza!**

**I just did a week's worth of cardio after walking into a spider web.**

**I don't mean to brag, but I finished my 14-day diet in 3 hours and 20 minutes.**

**A recent study has found that women who carry a little extra weight live longer than men who mention it.**

## Committee Reports

### Architectural Committee Report

Meeting: October 18

Project Summary: (19) Projects: (4) Completed; (11) Ongoing and (4) New Projects

Lot 6006 – Delayed for lack of better drawings and new roofing product.

Lot 326 – Approved Storage Shed conditional on minimum 75% foliage coverage.

Lot 461 – Approved new Heat Pump and screening location from view.

Lot 366 – Approved Pet enclosure.

Lot 295 – Approved 3-foot-high trellis/screen on 3 sides of electrical transformer.

### BMAC Report

Meeting: November 11.

Here are some notes on what was discussed.

- All paperwork for the 2019 actions has been submitted to the county and they have acknowledged receipt of materials.
- A notice will be placed in the *Kala Pointer* to advertise a January 22 presentation on how the BMAC process works. The 2020 section will be the section from Baycliff north. It is strongly suggested that all parties interested in bluffs tree actions in the north section should attend.
- We have received a contractor estimate of \$45 per tree for mitigation of the Central section tree removals in 2018. Work may have begun as you read this. All locations have been staked out.

Next meeting will be 12/9 at 1 p.m. in the Administration Building conference room.

### Elections Committee Report

Meeting: November 7.

Strategies for recruiting new members to committees and for BOD positions were discussed. Redoubled efforts will be made in January. Two members, Rita Hopkins and Cherri Mann, joined the committee. Next meeting is December 5 at 12:30 in the Administration Building. We are still looking for more members.

### Emergency Preparedness Committee Report

Meeting: November 7.

The following issues were discussed:

EPC's EXPO at the end of September featured talks from six professionals describing how to act fast and smart in various emergency situations. Information booths provided information on basic emergency preparations, evacuation procedures, emergency communications, EPC activities, and the Cassandra initiative. The next EXPO will likely be held in the spring of 2021.

The Great ShakeOut drill on October 17 drew over 180 participants across Kala Point. Residents joined block captains in each zone to practice radio communications, solve hypothetical emergency scenarios with the guidance of the Neighborhood Operations Center (NOC) team, and to learn more about Kala Point evacuation procedures.

The third Town Hall meeting on the Cassandra cache proposal was held Wednesday evening, 11/13, at 6:30 p.m. in the Clubhouse. Details of the proposal have been published in the *Kala Pointer* and on the EPC website; residents who want to know more before the upcoming yes/no vote on the initiative were encouraged to attend this final Town Hall session.

As part of its planning for 2020, EPC is working to set up a CERT (Community Emergency Response Team) training here in Kala Point for interested EPC members and residents. This is a highly recommended national program aimed at training people to assist in emergencies when professional responders are not immediately available. The course consists of 24 hours of class instruction and exercises on fire safety, light search and rescue, disaster medical operations, team organization, and more. Contact Anne Englander if you are interested in participating in this course.

Other 2020 events will include a potato bake/chili cookoff fundraiser or a similar event sponsored by the EPC. Quarterly lectures on emergency preparedness are also contemplated.

### Grounds Committee Report

Meeting: November 5

- Pat Miles has resigned as chairperson due to personal obligations.
- The Committee is actively recruiting new members.

## Committee Reports

- Scott Rovanpera will create a table of compliance requirements that are assigned to the Grounds Committee and the General Manager from the CC&Rs, Rules & Regulations, and related Administrative Procedures & Policies.
- Steve Reed will update the APPs that will define compliance requirements.
- Tom Gillespie suggested that the focus for the committee will be on educating the residents on important compliance requirements.
- Scott Rovanpera is working on a draft for a new sign policy that will cover vehicle, safety, and general information signage.

### Publications Committee Report

Meeting: November 4

Highlights:

- Preparation for the November *Kala Pointer*, with Mike Burk as layout editor
- A media advertising packet will be distributed to vendors.
- Introduction of Marilyn Berry as new member to the Publications Committee

### Tree Committee Report

Meeting: November 14

The Tree Committee is interested in finding new members for 2020. We are a friendly group and increasing our knowledge about our forested environment is a priority. We hope you will consider joining us on the second Thursday of the month, at 9 a.m. Our next meeting will be in January 2020.

- Tree committee currently authorizes all limbing of branches up to 15 feet from the ground, from any point. As the FireWise group refines recommendations, additional recommendations may be made to homeowners.
- Kala Point grounds crew will begin limbing branches on common areas along the upper half of Kala Point Drive at the end of December.
- A draft outline of the Kala Point Community Forest Assessment has been prepared by the Peninsula Environmental Group. Feedback to Peninsula Environmental will be discussed at the January meeting.
- Remedial action at 270 Pinecrest has been accepted

by the Board and the case is now closed.

**Open Cases:** Three cases are closed with the tree action complete. One because the tree work has not been completed, and one tabled because there is a question about possible interference with new utility lines. One case is under review because the resident apparently limbed several trees 50+ feet from the ground without communicating with the Tree Committee.

**New Cases:** Ten new cases were reviewed. Nine of the requests were approved; the last one is pending because the homeowner was not home. ❄️

## Woodworkers Group

*Michael Machette*

In order to share their talent and passion, several Kala Point residents are forming a Woodworkers Group. If you are an active woodworker, just let us know. We will have our first meeting in January to map out activities for 2020.



Potential activities include demos of active projects, tours of our shops, field trips to local resources, and opportunities to share ideas, discuss woodworking issues, and get dusty. If you are interested, contact Michael Machette by the end of December at [machette1550@gmail.com](mailto:machette1550@gmail.com); 360-531-2441.

**It's beginning to cost  
a lot like Christmas!**

## Kala Point's Social Plus

# New Year's Eve Party

Celebrate the birth  
of a brand-new year  
with your friends and neighbors!

Come to the Kala Point Clubhouse and enjoy socializing,  
delicious appetizers (bring some to share),  
beverages (bring your own), live music and dancing.  
Together, we'll ring in 2020 at "New York time."

This free family event will feature  
**Midnight Train Blues Band**



**TIME:** 6–9 p.m.

**COST:** Free (tips for the band will be appreciated)

**LOCATION:** Kala Point Clubhouse

**REMEMBER:** Bring appetizer to share and your own beverages;  
plates, glasses and utensils provided

**CONTACT:** Barb Dawson 360.344.2084 or Patti Biazzo 360.385.3262



## Jefferson Public Utility District No. 1 (JPUD) Reports

### November 5, 2019, Board of Commissioners (BoC) Meeting Report

*Reported by Scott Rovanpera*

The Commissioners have been asked by JPUD Staff to make a decision in early 2020 to approve a broadband business model and provide direction to the staff on implementing broadband as a part of their service.

The 2020 BOC meeting calendar was approved.

The 2020-2021 rotation of officers was approved:

President – Dan Toepper

Vice President – Kenneth Collins

Secretary – Jeff Randall

Jimmy Scarborough, interim electrical engineer supervisor, explained the source of the power outage in Kala Point on October 23 as a damaged underground electrical cable. When Kala Point was being developed in the late 1970s, the original installation of the underground utilities consisted of direct burial of electrical cables. On Fairbreeze Drive, the insulation surrounding a cable cracked and allowed water to seep into the conducting wires, causing a ground fault short circuit. This tripped the fuse at the transformer in Woodland Hills and shut down power on various streets in Kala Point, affecting 200 homes. Jimmy noted that JPUD uses an algorithm model to help the line crews track down the location of the ground fault, but it requires notifications from Kala Point residents on where the power outage exists. He recommended that during a power outage, Kala Point residents call JPUD Customer Service to notify them of your location during a power outage. This will assist them in tracking down the predicted location of the blown cable.

Jimmy Scarborough will send a full report of the outage when the field report is received.

### November 19, 2019, Board of Commissioner (BoC) Meeting Report

*Reported by Scott Rovanpera*

Bill Kaune expressed concern that JPUD does not have a Water Emergency Plan. President Randall acknowledged his comments and mentioned that staff is working on a District-wide water emergency plan. He noted that the Kala Point well system has an emergency generator as back-up power to the groundwater pumps.

Vice President Toepper reported from a recent Washington Public Utility District Association

(WPUDA) meeting that with the passing of Proposition I-976 (vehicle registration fee reduction), the future lack of funding for water infrastructure projects is a major concern for JPUD, as JPUD applies for such funding for water pipeline projects.

The RF Transmitting Opt-Out Policy was reviewed by the BoC in its “first touch.” There was much public comment regarding the policy’s unnecessary definitions, misuse of terminology, clarity and simplicity. The general manager will update the policy and bring it back to the BoC at the next available meeting.

The BoC reviewed the staff’s report for applying for a \$5 million “line of credit” from the National Rural Utilities Cooperative Finance Corporation (CFC). Monies borrowed must be paid back within three years (maturity date). Interest rate at current market conditions is approximately 3.5%, but this varies according to the prime rate. The JPUD financial advisor suggested that a line of credit with CFC would provide it financial stability in case of an emergency, especially since the remodeling and expansion of the Operations Center is drawing down the JPUD reserves.

The BoC approved the resolution to renew their contract with Northwest Open Access Network (NoaNet) for another five years and share the revenues equally. The NoaNet Interlocal Agreement expired in January 2019, but both parties have continued to operate JPUD’s telecommunication network pursuant to the original agreement. The District renegotiated the contract on more favorable terms, reflective of the strong relationship that NoaNet and JPUD have developed. ❄



## Get To Know Your Neighbors

### Pamela and Charlie Hicks

*As told to Angela George*

Charlie and I had been visiting the Pacific Northwest since we met in 2009. We primarily spent time on Bainbridge Island and the Madrona neighborhood east of Seattle. When we discussed retiring, the PNW was a natural choice. Charlie researched options and narrowed down his interest to locations within the rain shadow.



In the Spring of 2018 we visited and began shopping. Because Charlie wanted a view of the shipping lanes, we started our search in Port Orchard, working our way up the coast as far as Port Angeles. Luckily, we met a wonderful realtor in Port Ludlow who showed us two homes in Kala Point. Being more than ready to retire, it was easy to take the leap. Our offer was accepted, we flew home, gave our employers notice, readied our home for the market, sold it, and arrived in KP within 10 weeks. Although we hired help with loading and unloading the moving vans, we did everything else ourselves. This included Charlie driving a 26-foot U-Haul, flying back to Michigan to drive another 26-foot U-Haul, then flying back to retrieve his car. He was so excited to make the last trip that he drove over 2,400 miles in two and a half days! I followed his second haul with our dog, Diesel, and two cats, Gunner and Veronica.

We both lived in Michigan for most of our lives. Charlie worked as an electrician for Chrysler and I worked for DTE Energy in underground distribution. We enjoy working on our house and property, we both bicycle, Charlie golfs and likes to fish. He is in the process of a major yard renovation

The icing on the cake has been discovering this wonderful place with so many happy, active, generous people. We feel lucky to be in a community with walking and biking access to the State Park, or even downtown to restaurants and concerts. We love the

beach and accessing it via hiking trails is one of our favorite ways to relax!

### Karl and Linda Kostenbader

*As told to Angela George*

We moved to Kala Point in 1998 and have lived here 21 years. We fell in love with the whole area, with its majestic mountains and beautiful waters, after spending winters and summers staying with my aunt and uncle in Port Angeles. We specifically chose Kala Point because we had enjoyed living in a planned community in Virginia. In addition, Kala Point has the trees, waterfront and mountain views we love, but is still small enough so that we knew we could get to know our neighbors.

Prior to moving here, we lived in Northern Virginia,



close to D.C. Karl retired from the Navy where he had been a Navy pilot. After retirement he established his own company in the D.C. area. Meanwhile, I taught elementary school, kindergarten through fourth grade, for over 30 years. I was also a sponsor of a chapter of Young Astronauts from grades four through six.

Our interests are varied, ranging from travel to music and art. We do not have pets and our indoor plants often have to fend for themselves. We have a busy social life, including regularly hosting a happy band of TGIFers on our street — where Karl has been affectionately dubbed “mayor.”

Karl and I are both active members of the Rotary Club of East Jefferson County. Karl has been the head of several committees. I developed the Interact Club, a youth group sponsored by Rotary, at the Chimacum High School; I was the main sponsor for 12 years. I am the Youth Exchange Counselor and a member of the Rotary Scholarship Committee. I also belong to AAUW Port Townsend, of which I was President for two years several years ago. ❄️

# *JOIN US ON JANUARY 1, 2020, FOR THE*



## *THIRD ANNUAL POLAR POKER PICKLEBALL TOURNIE*

*11 a.m. - 1 p.m. at the Kala Point Lagoon Pickleball Courts*

*Celebrate the New Year with some fun and games!*

*Every skill level welcome and with an element of luck,  
your poker hand can win the day!*



*If you don't have fun, it's probably your hangover's fault!  
\$10 per person to cover PB supplies, hot food and hot drinks.*

*Please RSVP by December 28, to Michael Machette ([machette1550@gmail.com](mailto:machette1550@gmail.com))  
We'll be there rain, snow, sleet or shine and we're predicting:*



## Two New Homes Grace Kala Point Suzanne Eggleston

**A house is so much more than a structure. It's a place where we can be our most private selves, find sanctuary, build and store memories, and shape and share our lives with others.**

**For an owner, building a house is often, not surprisingly, about realizing a dream. Fortunately, this process, as Kevin McCloud, host of British television series "Grand Designs," says, is "achievable; anyone can do it." Sometimes, McCloud says, "building just takes you somewhere that's far more exciting than you dreamt it would be."**

**Here are two recently realized dreams in Kala Point, one built by an owner and one by a contractor. Last month's *Kala Pointer* featured five new homes in the neighborhood; keep an eye out for upcoming issues as well.**

### 35 Creekwood Place

Moving to Kala Point was an obvious choice for Dru Froggett. She came here 15 years ago with her sister Stephanie to investigate places to retire. "We both really liked the beach, boat dock and the state trails in Kala Point," says Dru.



Stephanie and her husband John, who serves as CFO for Kala Point's board of directors, retired first and purchased a home in Kala Point. Dru's nephew Don and wife Kris came to Port Townsend, followed by her brother Steve, who also bought a home in Kala Point.

"It was only logical that I move to Kala Point where my family lives," says Dru.

Dru decided to build her contemporary Craftsman when she retired as a Phoenix Police Department sergeant, as she wanted to "design and build my dream. Which I have."

Of all the features in her new home, Dru likes the courtyard entrance the most.

Dru worked in the Crimes Against Children unit and now lends her considerable experience to the Jamestown S'Klallam Tribe where she serves as a domestic violence and sexual assault child advocate.

### 22 Blenheim Place

The contemporary Craftsman at the end of the Blenheim cul-de-sac was built by Doug Hathon, owner of construction company Hathon, Inc.

Doug thinks the house a nice fit stylistically for Kala Point. "Real cedar siding and color schemes... blend into the forested surroundings," says Doug. The home incorporates covered outdoor living areas that Doug says take advantage of the sights and sounds of the great Northwest.

He sees the neighborhood's amenities as obvious selling points for his house. "The amenities, such as the beach, boat launch and mooring balls, tennis courts and swimming pool are unbeatable in any other community. The grounds and roads are impeccably maintained and it's a slice of Utopia."



Doug also likes the ease of building in Kala Point. "From my perspective, Kala Point is a great place for me to build as I already have a good working relationship with the administration as well as the architectural and tree committees. The rules are clearly defined and if one adheres to the rules, there should be no problems."

The house has a pending sale in mid-November. ❄️



# Yard & Garden 2020 Lecture Series

## SAVE THE DATES!!

Six Saturdays, 10 AM – 12 PM  
January 11 thru February 15,  
2020

- Maintaining a healthy bee population
- Deer Resistant Gardening
- Horticultural Therapy
- Designing with Foliage
- Climate Change Gardening
- Herb Lover's Garden

*Tickets on sale in December 2019*  
*[jcmgf.org](http://jcmgf.org)*



Jefferson County

Master Gardener Program

WASHINGTON STATE UNIVERSITY  
EXTENSION



**Kala Point Morning Walkers**

*Angela George, Joanne Levine and Frances Loubere*

You may have seen us, rain or shine. We are a motley crew of morning walkers. Or perhaps you've heard us! Eight years ago two Saddletree neighbors met and began walking – and we're still going. Let's see: eight years times 52 weeks times an average of 2.5 miles three days a week = well over 3,000 miles!



We grew into a group as more neighbors, from outside Kala Point too, joined the fun. Our current, active list includes 16 regular, semi-regular, and once-in-a-while walkers – with as many more who have moved on to other activities. On a typical morning, six or seven of us show up.



We've made friends, shared joys and heartaches, partied, and worn out shoes. The baby who joined us for a while (in utero and then in a carrier) just turned five.

Some of us don Yaktrax for snow and shelter under umbrellas; others are fair weather walkers. Some are speedy, some are slowpokes, and some sing on the trail. However, we're all morning talkers! No topic is off limits. We learn, and we laugh a lot. Political debate (national and Kala Point, civil of course) just revs us up so we get more exercise! We've also debated (but not agreed on) a group name such as Jabberwalkies or Walkie Talkies!



Sometimes we scale “butt burner” Baycliff; sometimes we tromp through the Park. We trek the Bluffs Trail, the high and low tide beach, around the spit and up the boardwalk. We marvel at giant logs and tiny trillium. We admire big leaf maples towering over minute calypso orchids. We watch dangle-legged herons, eagles and otters. We love gorgeous gardens.

We circle Woodland Hills (we've dubbed this Narnia) and the Island View neighborhood – this is The Chris Loop. And we wave in Pat's direction on Terrace Drive as we walk The Pat Loop.

Would you like to walk with us? We welcome all, including men — sadly we just bade farewell to our three-year stalwart and his spouse! We gather MWF at 9 a.m., on Compton Place, the circle off Saddletree. We usually walk for up to 90 minutes and cover from two to four miles.

A heartfelt thanks to our hardworking grounds staff. Our trails are fabulous!

For more information, contact: Angela [angela@lakecomm.com](mailto:angela@lakecomm.com), Joanne [joanne.levine@gmail.com](mailto:joanne.levine@gmail.com) or Frances [francesfal@aol.com](mailto:francesfal@aol.com). ❄️

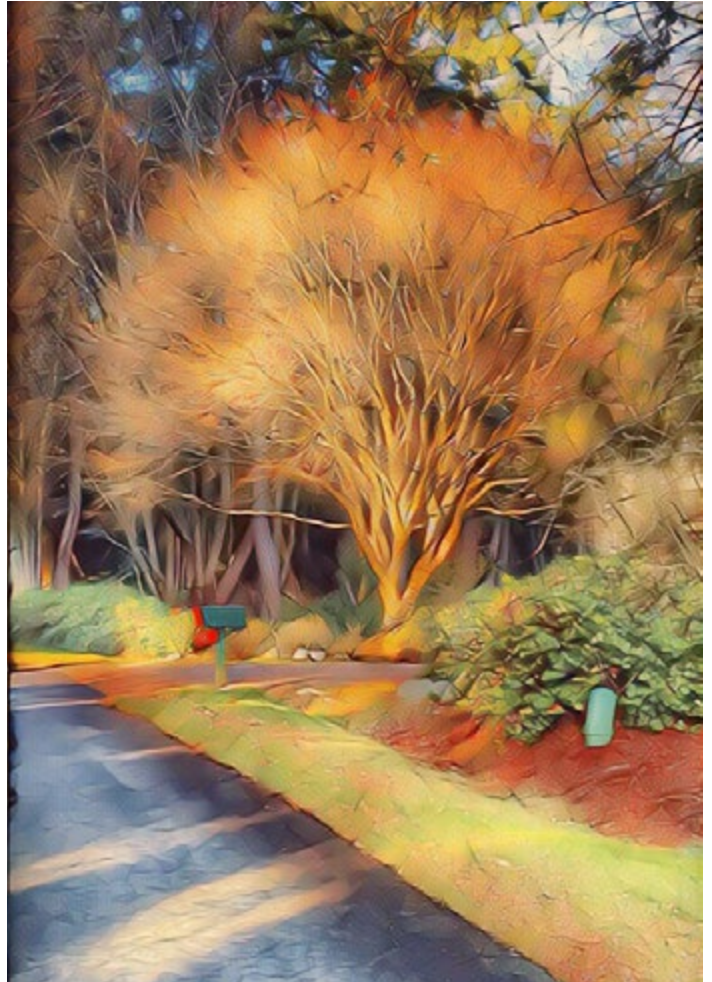
# Through The Lens



Angela George



Angela George ↓



Bob Segui ↑



# Through The Lens



Suzanne Eggleston



Suzanne Eggleston

## Neighborhood Classified Ads

Neighborhood Classified Ads cost only ten cents per word.  
Please pay at the Kala Point office when you submit your ad.

### WANTED: RENTAL

Retired attorneys from Seattle would like to rent a house or condo in Kala Point for the months of July & August. Prefer king (or at least a queen bed). Non-smokers, no pets, and will have no visitors during that time. We've owned unit 21D in the timeshare village since it was built. Please respond by email to [LFinegold@gsblaw.com](mailto:LFinegold@gsblaw.com) or [SharonFinegold77@gmail.com](mailto:SharonFinegold77@gmail.com)

### ONE-OF-A-KIND DOLL CLOTHING

For 12" to 30" dolls.

See my designer, hand-sewn collection on [Etsy.com](https://www.etsy.com/shop/wonderfuldollclothes) at "wonderfuldollclothes".

More than 100 choices for that special person.

Special orders welcomed. Sharon Ross 360-385-2365

### For Sale

- Black Leather Sofa • \$260
  - Ping Pong Table • \$70
  - TV Stand • \$50
  - Glass Coffee Table & End Table • \$300
  - Cardio Glide • \$60
- Contact (360) 385-7320



## Commercial Advertisers

When you patronize one of our advertisers, please tell them you saw their ad in the *Kala Pointer*. We want them to know their advertising dollars are well spent. If you're satisfied, please tell your friends and neighbors. If you're not satisfied, please tell the advertiser.

## Meet our new advertiser

Patios • Decks • Sheds • Garages • More



**CEW construction**

**Chad Woodley • (360) 301-6077**  
 "No job is too small... give us a call!"  
 CEWconstruction17@gmail.com

Jefferson  
Healthcare

CARDIOLOGY CLINIC



Schedule: 360.344.1001  
JeffersonHealthcare.org



Jefferson Healthcare is expanding and enhancing cardiovascular services to provide a wider array of treatment options and exceptional heart care. *Right here at home.*

# Quality & Service at Competitive Prices

Tile, Carpet, Hardwood, Bamboo Flooring,  
Financing Available O.A.C.

*We have Furniture, Mattresses, Recliners & more!*



## PENINSULA FLOORS & FURNISHINGS

2405 West Sims Way • Port Townsend  
360-385-0945

References Available



# Benny & Sue Short

## PROSSER PAINTING & CONSTRUCTION

### 360-710-6138



[Glenn\\_prosser@hotmail.com](mailto:Glenn_prosser@hotmail.com)

[www.ProsserDesignBuild.com](http://www.ProsserDesignBuild.com)

PROSSPC895NR



**R&M Services:**  
I install garbage disposals, faucets, interior light fixtures, etc. I also restring window-blinds.

**FOX'S Blinds, Shades, etc.**  
*Our prices are lower than the warehouse & club stores!*  
**For custom products our prices can't be beat!**  
**Over 35 years' experience.**  
For a free in-home consultation, call  
**360-379-2548**  
Contractor's License #FOXDRD\*959CQ

**24-HOUR EMERGENCY SERVICE**  **Good Man Sanitation**

- Septic Pumping & Inspection
- Electronic Tank Locator
- Video Inspection
- Bonded & Insured
- Certified Maintenance & Monitoring

**360.385.7155**  
**360.457.4121**  
800.743.2515

**PORTABLE RESTROOM RENTALS**  
Delivered & Serviced  
Special Events • Construction • Farms

**www.goodmansanitationinc.com**  
*Locally owned and serving the Olympic Peninsula since 1954*



**TOWNSEND GUTTER CLEANING**  
**360 . 316 . 6561**  
Robert Barber

**Winspear Construction Services LLC**

- General Contractor - Small and Medium Projects
- Painting and Deck Refinishing & Repair
  - Interior Hardwood Installation, Repair and Refinishing, including Stairs
- Carpentry, Pressure Washing and more...
- Free Estimates - Licensed, Insured and Bonded

**Contact David at 360-797-5254**  
**dawinspear@gmail.com**  
Contractor #WINSPCS830LB



## Kala Pointer Newsletter

Kala Point Owners Association  
1760 Kala Point Drive  
Port Townsend, WA 98368

### Remember Hang Those Parking Tags!

Please provide your visiting family, friends, and guests with Kala Point Hang Tags this holiday season.

### KPOA Facility Hours

#### Administration Office

Monday–Thursday: 8:30 a.m.–2:30 p.m.

Friday: 8:30 a.m.–1 p.m.

#### Clubhouse

Monday–Sunday: 9 a.m.–8 p.m.

#### Pool

Closed

#### Jacuzzi and Sauna

Monday–Sunday: 9 a.m.–7:45 p.m.

DON'T  
get your  
TINSEL  
in a  
*Tangle*

- Naughty?
- Nice?
- Undecided?
- Let me explain!