

# Kala Pointer



The *Kala Pointer* is a Monthly Publication of the Kala Point Owners Association

September 2019

## President's Message

Joe Englander

Happy New Year!

Yes, it is September, but in wide swaths of the United States the rush of new seasons of popular TV programs and the beginning of the school year create the feeling of starting afresh. In fact, September is probably the real new year for most of the country while January is just the traditional one. So why not make some New Year's resolutions in September?

For most of the committees of KPOA, September begins the new year since any changes to their Administrative Policies and Procedures (APPs) are supposed to be reviewed in August and submitted to the Board of Directors in September. So, in a sense, all the committees are beginning a new year, too. That makes this a great time to join a committee. Every committee is made up entirely of volunteers who are your friends and neighbors. Every Kala Point committee is in need of new members. Most of them need only a couple hours of your time each month. Surely there is one that matches your skills and piques your interest. Take your pick!

The **Architectural Committee** makes certain that each new addition to our community enhances the value of existing properties; those additions might be new construction or they might be modifications to existing structures. If you have an interest in or experience in the building trades, architectural design, home improvements, or how one home affects those around it, this is the committee for you. Please contact Caroline McNulty at 360.379.6818.

**Bluffs Management Advisory Committee** interfaces with the county on behalf of our members who are seeking to maintain their views while

**Continued on Page 11**

## In This Issue:

Board Meeting.....	2
Calendar of Events .....	4
It's a Dog's Life! .....	7
EPC Expo .....	12
The Kala Point Bridge Club ..	14
The <i>Laffing Lady</i> .....	15
Committee Reports .....	16
PUD Commissioner Report ..	17

## September in Port Townsend!

It's the month for Port Townsend's world-renowned festivals!

From Wooden Boats to Fantastic Films to the finale of Olympic Music.

We even have more R2AK fun and Ukuleles too!  
Check our calendar on page 4.

### September *Kala Pointer* Staff

*Editor:* Mike Burk

*Copy Editors:* Suzanne Eggleston, Hilary Newell, Gail White

*Chair:* Suzanne Eggleston

*Secretary:* Hilary Newell

*Masthead Photo:* Mike Burk

### September Contributors

Karl Bach

Mike Burk

Suzanne Eggleston

Joe Englander

Anne Englander

Joan Fisher

Ron Gentry

Angela George

Nancy Leeds

Paul Loubere

Dale Moses

Gary Obermeyer

Char Quandt

Terry Rose

Scott Rovanpera

Bob Segui

Pamela Thompson

### Next Newsletter Deadline

Deadline for the October 2019 issue of the *Kala Pointer* is September 20.

**Submit your articles to:**  
[YourKalaPointer@kalapoint.org](mailto:YourKalaPointer@kalapoint.org)

Our Letter to the Editor policy can be found at :

[Letters to the Editor Policy](#)

## 2019–2020 Board of Directors

*Click to Email*

President **Joe Englander**

Vice President **Kim Titus**

Secretary **Dale Moses**

CFO **John Oliveira**

Director **Jean Erreca**

Director **Tom Gillespie**

Director **Dan Kimball**

Director **Steve Reed**

Director **Scott Rovanpera**

**Email the Entire Board**

## 2019–2020 Committees

Architectural, **Caroline McNulty**

BMAC, **TBA**

Elections, **TBA**

Emergency Preparedness (EPC),

**Anne Englander, Joyce Wenz**

Finance, **John Oliveira**

Grounds, **Keith Larson**

Internal Controls, **David Harrah**

Personnel, **Joe Englander**

Publications, **Suzanne Eggleston**

Social Plus,

**Char Quandt, Diana Zinn, Patti Biazzo**

Tree, **Mark Kleinman**

## What Happened at the August Board Meeting?

**Dale Moses, KPOA Board Secretary**

Your KPOA Board of Directors met at 1 p.m. on Tuesday, August 13, 2019, in our KPOA clubhouse. There were 19 people in the audience. A quorum of seven Board members was established with Dale Moses and Kim Titus absent. Meeting documents were available prior to the meeting on the KPOA website (“Board Meeting Files” under the “Members” pull-down menu).

- There were several inputs from the audience at the beginning of the meeting; five people spoke on the definition of a guest at KPOA and on the tone of some of our signs
- Items of correspondence were reviewed: four emails to President Joe and one to the Board
- The annual review of the budget by the Board will be at 10 a.m. on October 15; budget to be ratified December 10 after a public vote
- Modification of speed humps at the entrance and exit gates was discussed and approved
- The newly formed Grounds Committee met to discuss certain issues, including ivy, dead cars and bush trimming
- The Board went to Executive Session for about 10 minutes for a potential legal action
- Anne Englander, Chair of the Emergency Preparedness Committee (EPC), discussed a major disaster and how Kala Point might be on its own for as much as two months, leading to the Cassandra initiative for KPOA to stock some supplies to help in such a time
  - An EPC sub-committee has worked out many details of the initiative
  - The Board agreed to support a series of town halls to describe the initiative to the community
- The Board reviewed and approved its goals for this Board year, adding one on creating a global search mechanism on KPOA website documents.
- A compliance hearing (on tree removal) was scheduled for September 10 after the regular Board meeting

**Continued on Page 3**

The Kala Point community is a common-interest residential homeowner association (HOA). When purchasing or building within Kala Point, homeowners agree to follow the HOA’s governing documents, which include: Conditions, Covenants and Restrictions of Record (CC&Rs); Rules and Regulations; By-Laws; and detailed Administrative Policies and Procedures (APPs). APPs are Board-enacted rules. The protective umbrella of these governing documents works in the best interest of all homeowners ensuring higher standards of neighborhood appearance and enhancing the collective value of the homes.

Continued from Page 2

- The issue on signage was referred to the new Grounds Committee
- The Board did not want to amend the CC&Rs for a different definition of “guest,” leaving it open for a community-initiated resolution if desired. Barring that, we will probably just continue allowing our guests to proceed independently as they have done in the past.
- Committee reports, including one from the new Fire Wise Committee, and a PUD report were presented
- Member inputs at the end of the meeting included information on the EPC container box

The Board adjourned at 3:02 p.m. If you would like to learn more about this Board meeting, feel free to listen to the recording of the meeting (available from the office) or send an **email to the Board** on a specific topic. ♦



### What is This and Why is it There?

It is going to be refitted to be used as the Neighborhood Operations Center for the Kala Point Emergency Preparedness Committee in the event of a disaster. It will be permanently located further to the east. It will provide a communications and operations center in a more earthquake-resistant structure than the second floor of the Administration Building. ♦

### On Getting Old

Knowledge is knowing a tomato is a fruit; Wisdom is not putting it in a fruit salad.

Some cause happiness wherever they go. Others whenever they go.

You're never too old to learn something stupid.

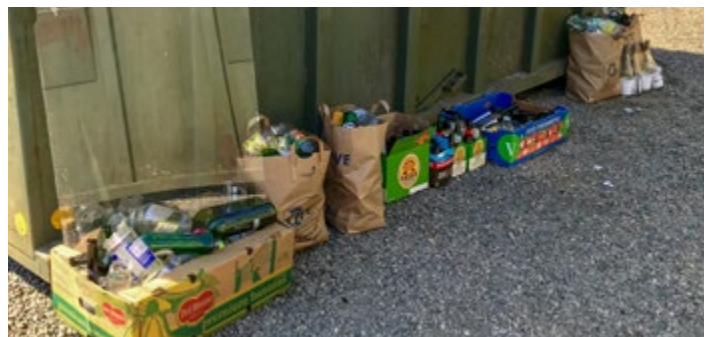
### The Senility Prayer

Lord, grant me the senility to forget the people I never liked anyway.

The good fortune to run into the ones I do,  
and the eyesight to tell the difference.



Jean and Steve Reed listen to East Jefferson Fire and Rescue Chief Jim Walkowski explain how to further reduce the risk to their home of wildfires. Chief Walkowski has confirmed that EJFR will visit all of the KPOA homes that signed-up for Firewise Evaluations.



...and come on, guys — you know better than this! It's not that hard: If the bin is full, come back when it isn't. Plate glass and plastic tonic bottles don't belong in glass recycling at all. ♦

# September Calendar of Events *Pamela Thompson*

## September 6

**R2AK Blazer Party.** Mix it up with racers and race organizers as they recognize new world records, hand out some awards and announce the details for next year's race. **TIME:** 6–8 p.m. **COST:** \$30. **LOCATION:** NW Maritime Center, 431 Water St. **CONTACT:** [www.eventbrite.com/](http://www.eventbrite.com/)

## September 6–8

**42nd Annual Wooden Boat Festival.** Featuring more than 350 vessels, indoor/outdoor demonstrations, live music, vendors, beer garden and Crafts by the Dock. **TIME:** 9 a.m.–6 p.m. Friday and Saturday; 9 a.m.–5 p.m. Sunday. **COST:** Adult \$20/day, Senior \$15/day, 3-day Pass \$40 (note: small additional processing fee applies). **LOCATION:** Northwest Maritime Center & Point Hudson Marina, 431 Water St. **CONTACT:** [festival@woodenboat.org](mailto:festival@woodenboat.org); tickets: [www.woodenboat.org/tickets/](http://www.woodenboat.org/tickets/); volunteer: [www.woodenboat.org/volunteer/](http://www.woodenboat.org/volunteer/)

## September 7–8

**Olympic Music Festival.** The season finale features “Art of the Violin II: Ray Chen and Julio Elizalde.” **TIME:** 2 p.m. **COST:** \$20–\$40. **LOCATION:** Wheeler Theater at Fort Worden. **CONTACT:** [www.olympicmusicfestival.org/](http://www.olympicmusicfestival.org/)

## September 12–13

**Port Townsend Ukulele Festival.** Two performances showcase the talented faculty and instructors following the festival's three-day workshops. **TIME:** 7:30 p.m. **COST:** \$30. **LOCATION:** Wheeler Theater at Fort Worden. **CONTACT:** [www.centrum.org/](http://www.centrum.org/)

## September 14

**Quilcene Oyster Races Run/Fundraiser for Quilcene-Brinnon Dollars for Scholars.** Choose your level of participation, walk or run in beautiful Quilcene in a half marathon, 10K or 5K. **TIME:** 9 a.m. **LOCATION:** 151 E. Columbia St., Quilcene. **CONTACT:** [www.runsignup.com/](http://www.runsignup.com/)

For more information about what to do in and around Port Townsend, check out [www.DiscoverPortTownsend.com](http://www.DiscoverPortTownsend.com)

## Peninsula Trails Coalition's Fifth Annual

**Trail Blaze Ball/Fundraiser.** Four great bands, gourmet food trucks and a silent auction will be featured. **TIME:** 2–10 p.m. **COST:** \$25 suggested donation. **LOCATION:** Finnriver Cider Garden, 124 Center Rd., Chimacum. **CONTACT:** [info@olympicdiscoverytrail.org](mailto:info@olympicdiscoverytrail.org), 360.775.5395, [www.olympicdiscoverytrail.org/](http://www.olympicdiscoverytrail.org/)

## September 19–22

**20th Annual Port Townsend Film Festival.** More than 100 films in eight theaters in PT's walkable National Historic District. Kicking off on with birthday cake and drinks on Thursday, and parties on with Dinner on the Street on Friday, followed by the Filmmaker's Reception on Saturday. It wraps up on Sunday with an Awards Party. **TIME:** 9 a.m.–10:30 p.m., Friday and Saturday; 9 a.m.–10 p.m., Sunday. **COST:** \$40–\$1,500. **TICKETS:** [www.ptfilmfest.com/PurchasePasses.html](http://www.ptfilmfest.com/PurchasePasses.html). **LOCATION:** 211 Taylor St. **CONTACT:** [info@ptfilmfest.com](mailto:info@ptfilmfest.com), 360.379.1333, [www.ptfilmfest.com/](http://www.ptfilmfest.com/)

## September 25

**European Beer Tour.** In this night of beer history through Europe, learn about the olden styles of Trappist Ales, Wits, Lambics and more, and the various styles of brewing from monks and age-old traditions passed down through families. Six brews will be sampled with food pairings. **TIME:** 6–9 p.m. **COST:** Pre-purchase tickets at Sirens for \$49 plus tax. **LOCATION:** Sirens Pub, 823 Water St. **CONTACT:** <http://www.sirenspub.com>

## September 28

**EPC Expo “Act Fast, Act Smart”:** Kala Point Clubhouse. See page 8 for more information.

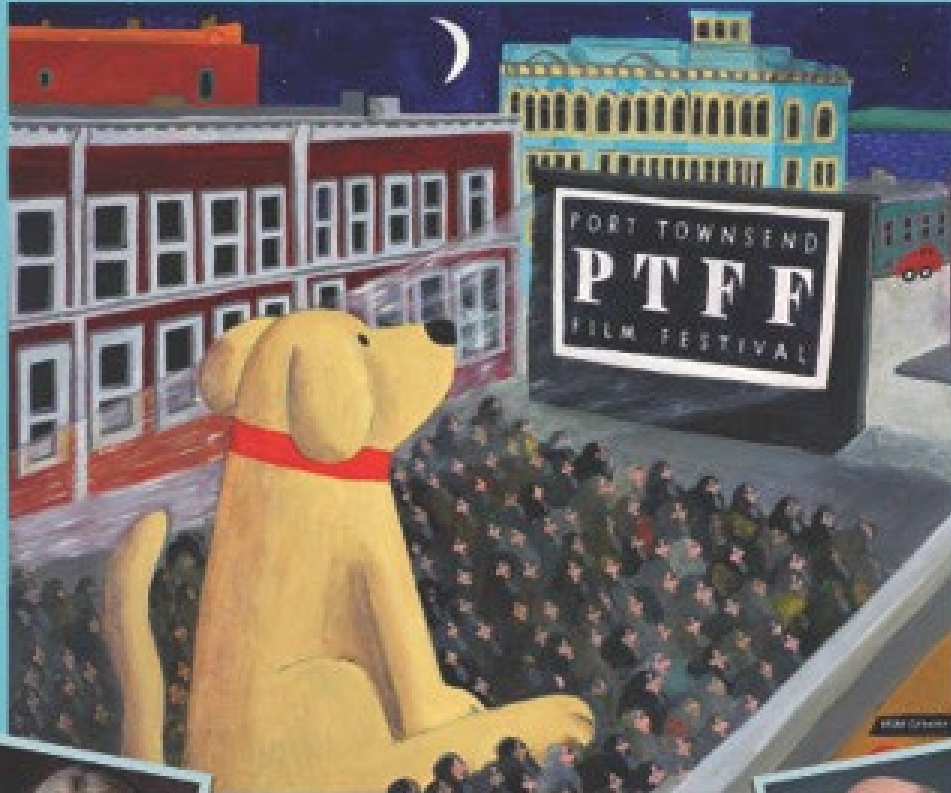
## Recurring Kala Point Clubhouse Events

**Board Meeting:** Second Tuesdays at 1 p.m.

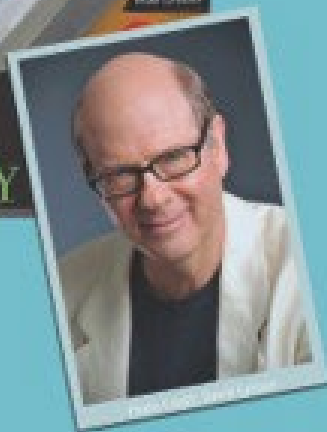
**Bridge:** Mondays at 11 a.m.

**Exercise Class:** Monday, Wednesday and Friday, 9 a.m. Bring a mat and hand weights. If interested in attending, call Doris Unruh, 360.385.3753.

**Tai Chat:** Tuesdays and Thursdays, 9–10 a.m. 24-form Tai Chi with breaks for chatting. All are welcome. Libby Nordlund, 425.273.4933, [eanordlund@aol.com](mailto:eanordlund@aol.com). ♦



WITH SPECIAL GUESTS  
**CHERYL STRAYED &**  
**STEPHEN TOBOLOWSKY**



20<sup>TH</sup>  
**PORT TOWNSEND**  
**FILM FESTIVAL**  
**SEPT 19-22 2019**

III PORT TOWNSEND'S WALKABLE NATIONAL HISTORIC DISTRICT  
 Passes & Information [www.ptfilmfest.com](http://www.ptfilmfest.com) 360-379-1333



## Do You Believe in Fairy Tales?

*By Joe Englander, President*

Last month I attended a conference in Port Angeles to hear FEMA and the National Guard explain what they have planned for the Olympic Peninsula if there is an area-wide disaster such as the Cascadia earthquake. You may remember that Ronald Reagan said the most frightening thing you could hear was “We’re from the government and we’re here to help.” Well, let me tell you that what I heard was a whole lot more frightening, but you don’t need to worry about hearing Reagan’s phrase because no one from the government is coming. There’s no white knight and there’s no calvary, either. We are on our own. I am not kidding and I am not being Chicken Little.

Laura Goudreau from FEMA and Lt. Col. Brathovde from the National Guard made it abundantly clear that in the event of a disaster, there will be no help for at least two months. That is their plan.

We all know plans can go wrong but things are hardly ever better than planned. We have, by now, all heard YOYO30 — you’re on your own for 30 days — but this was the first time I’d heard that the government is planning for us to be on our own for 60 days and I was hearing it from the very people who are in charge of any rescue we might see: FEMA and the National Guard. So now it isn’t YOYO30. It is just YOYO.

I have been counseled that I should let up on urging Kala Pointers to prepare, that people don’t want to hear about this stuff anymore, that disaster preparation fatigue has set in. I admit that no one knows when an area-wide disaster like Cascadia will happen, but few will say it won’t ever happen at all. The longer it doesn’t happen means the sooner it will happen. We need to prepare ourselves for a minimum of 60 days survival without any replenishment of food, water, medicine, propane or beer. There will be no electricity, phones, Internet, or banks; what you have is what you’ll have.

We live on an isolated peninsula, outside of a small town, at the end of the road; in other words, we are at the tail-end of priority for ever getting anything. Help will go to where it will do the most good for the most people: large population centers with easy access. Obviously Seattle, Tacoma, Olympia and even Bellingham will come before us — but so will Port

Angeles, Sequim and Port Townsend (of which we are not a part). Only then will unincorporated subdivisions like Cape George, Kala Point and Port Ludlow see help.

And what do they have planned for a timeline?

As they see it, all of Washington west of the Cascades will be a mess, so Spokane will become the Operations Center. It will take 10 days to two weeks to set that up, assuming all the contractors fulfill their obligations. The Washington National Guard is part-time which increases their timeline significantly. Eighty percent of the WA NG lives along I-5 in areas that will be affected by a Cascadia Subduction Zone (CSZ) event. That response will be even more delayed while they take care of themselves and their families before mustering.

Eastern Washington will be affected probably by a 5.0 and airports east of the Cascades could require substantial repair and recertification before they are useful. Every time there is an aftershock, all ports and airports will have to be reinspected and

possibly re-repaired. Speaking of ports: the earthquake will cause bathymetric changes to all of the shipping lanes in the Sound, the Canal, and the ports themselves. No large ships will work this area until those lanes are remapped — and then remapped again after aftershocks.

Washington won’t be able to supply enough military; aid will have to come from other states via existing mutual aid agreements, assuming those states don’t also have an emergency. Washington has agreements with Idaho, Nevada and Louisiana. Grand Coulee supplies electricity to six states, none of which are likely to offer aid since they will be in the dark. This also eliminates aid from Idaho and Nevada, leaving Louisiana, assuming it isn’t hurricane season. There are only five regular military Contingency Response Groups and of those, only two are in the US — in California and New Jersey. Since California will likely suffer some effects of a CSZ event, most of the active military aid will come from New Jersey via the Panama Canal — nine days in transit — and via air, again assuming Spokane-area airports are okay. This assistance assumes there is no national emergency such as a foreign adversary taking advantage of the chaos following a CZS event or our being involved in some other conflict elsewhere in the world.

**Continued on Page 16**

As they see it, all  
of Washington west  
of the Cascades  
will be a mess...

## It's a Dog's Life!



“Sophie” *Fanfare One Little Bit of TLC* worked her way through six out of eight trials at the Cascade Dachshund Club’s Scent Trials event last month. Sophie is a Border Terrier. (Sophie wants everyone to know that mom cleaned the counter after the picture.) *Anne Andritsch*



“Hank” *GCHG Pennyshire Solid Alibi* was *Best Veteran* and received an *Award of Merit* at the Cascade Pembroke Welsh Corgi Club’s annual specialty show. *Mike & Debbie Burk*



“Emmett” *Tallyrand & Triad Love Has A Name* was *Winner’s Reserve Dog* and received an *Award of Merit* at the Golden Gate Pembroke Welsh Corgi Fancier’s annual specialty show. *Lois & Joe Zelenski* (That’s Joe looking on in the upper left.)

## 8 Ways My Dogs Have Changed Me

*Nancy Leeds*

1. A lot of people say they are their dog’s mom, but I narrate every single action I perform for our dogs. “Oh, are you hungry? Your mom hates it when you are hungry. Your mom will feed you.” Or, “Do you need your mom to open the door for you? Your mom will open the door.” Or just “Do you know who loves you? Your mom. That’s right. I am your mom.” As if the poor dog knows what the devil I am saying.
2. The inside of my car is covered with dog hair.
3. I think the whole purpose of going to parties is to talk to someone other than the dog.
4. My vacuum bag is 90 percent full of dog hair.
5. Leftovers are “frosting” on the top of their kibble. I cook with them in mind.
6. I get 10,000 steps in a day just opening doors to let them in or out.
7. I just love going to the pet section of stores, looking for a new toy or treat for the dogs where in days gone by, I was looking for something for my children.
8. Instead of talking of our ailments, my friends and I talk about our dog’s problems. ♦

# Through The Lens



**Sunrise Through the Fog over Port Townsend Bay**  
*Ron Gentry*



**Point Hudson Color**  
*Bob Segui*



**Gun Battery Mechanism, Fort Worden**  
*Mike Burk*



**My Favorite Dahlia**  
*Suzanne Eggleston*

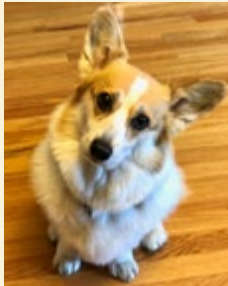




**A Gray Morning in “Fogust”**  
*Mike Burk*

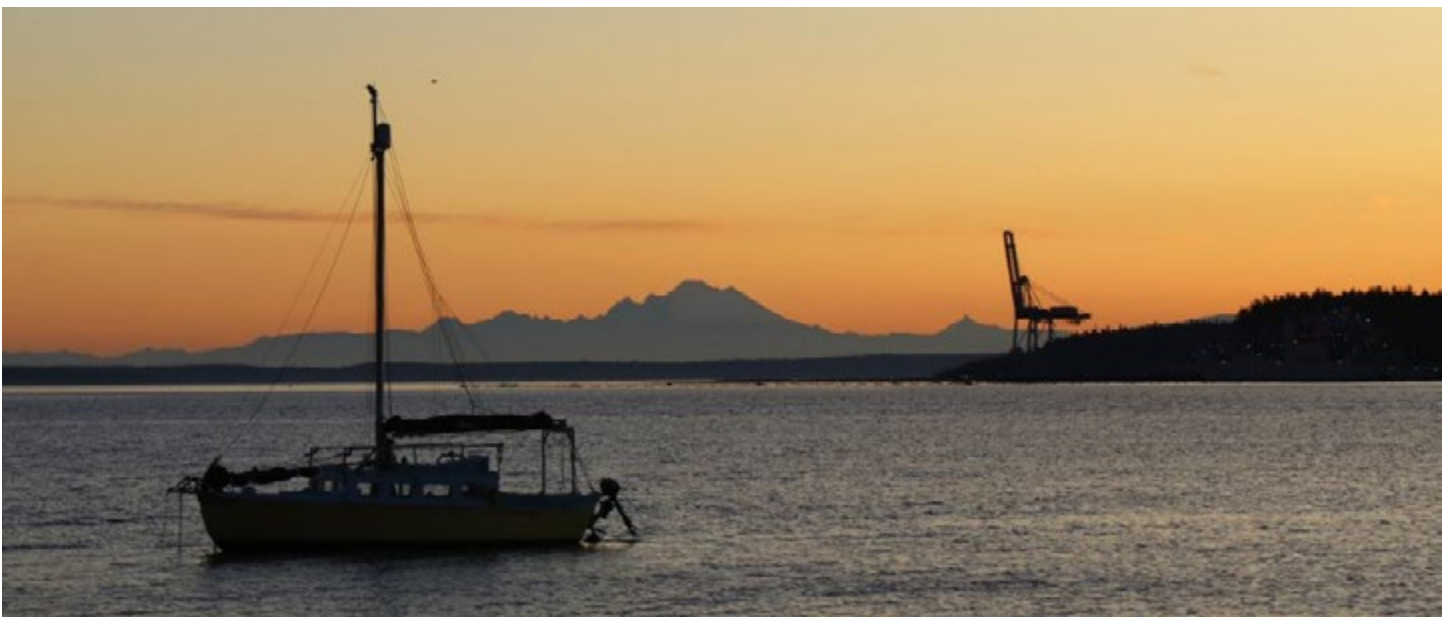


**Maple**  
*Bob Segui*



Darby Jean is pretty sure we have more great photographers here in Kala Point. She thinks we need to see some of their photos. She thinks they should send them to us:

[YourKalaPointer@KalaPoint.org](mailto:YourKalaPointer@KalaPoint.org)



**Summer Sunset From Kala Point Beach**  
*Angela George*

# *Kala Point Funsters Wanted!*

Char Quandt



Do you like to have fun? Do you enjoy meeting new friends? Do you have some fun social event ideas for our neighborhood? Perhaps you've thought about helping out the Social Plus committee with an event. Or maybe you just want to hang out with some fun folks making fun things happen in our beautiful neighborhood!

Please mark your calendar to attend the *new* Social Plus Annual Planning Meeting:

**Tuesday, September 24, 2019, at 3 p.m. in the Clubhouse.**

Since Social Plus will no longer be meeting on a monthly basis, this meeting is vital to get plans made for the year.

Bring your creative ideas and we will brainstorm and make plans for Kala Point social events and activities for October 2019–September 2020. Your input is important as this is your neighborhood!

***Everyone is welcome! Hope to see you there!***



**Continued from Page 1**

maintaining stability of the bluffs. In other words, this committee directly affects those with homes along the bluffs but also those who overlook the bluffs. Without this committee, each individual homeowner would have to deal directly with Jefferson County to obtain permission for any action on vegetation or trees on the bluffs; each action requires the expense of permits and consultants. The BMAC assembles all of the requests and helps to ameliorate some of the expenses through making a group application to the county and by splitting expenses for consultants. If you live along the bluffs or have a bluffs view, it is in your own self-interest to support this committee. If you join, you'll be trained and helping yourself and your neighbors. Contact Bob Winfrey at 360.975.8066.

Kala Point is one of the few places where elections are non-political. The reason for that is the **Elections Committee**. These folks recruit people to serve on the Board of Directors. If you think you know someone who would be a great member of the board, join this committee and get them nominated! The Elections Committee also puts together the ballots and manages the voting on administrative and budgetary issues, too. Even though they meet only once a month for an hour, they have all the expected power and influence of any of the many smoke-filled backrooms in Kala Point. Only non-smokers need apply [just kidding]. Occasionally meets for margaritas at the Taqueria [not kidding]. Contact Pat Miles at 360.531.3026.

The **Emergency Preparedness Committee** tries to figure out how to save your life and the lives of the people you know and love. As I discuss elsewhere, when there is an area-wide emergency there will not be enough professional first responders. Kala Point will depend instead on these volunteers. Some specialize in first aid; others, in ham radio and communications; others, in organizing their neighborhoods; others, in mechanical support such as driving trucks and tractors and operating chain-saws; others, in pet management. This Committee also needs volunteers who may not be able to attend all the meetings but who are willing to get the minimal training needed to be useful during a crisis such as how to drive the KPOA tractor or start the generator. Contact Anne Englander at 360.316.9339.

Are you good with numbers? Have a background in accounting or business management? Interested in where Kala Point spends your money? The **Finance** and the **Internal Controls Committees** have a place for you. The Finance Committee handles the accounting and associated spreadsheets while Internal Control is

more hands-on bookkeeping. Neither takes much time because the current members are very business-like in their approach. They have been responsible for keeping KPOA on a well-managed, straight-and-narrow path of financial stability. If you've operated a business, been a business manager or been in accounting or bookkeeping, they're interested in your lending a hand. Contact John Oliveira, our CFO, for the Finance Committee at 360.774.0439; for Internal Control, David Harrah, at 360.385.1423.

The **Personnel Committee** meets only as situations require. It is the equivalent of a Human Resources department and would greatly benefit from members who have experience in that field. Is that you? Please contact me at 360.390.5896.

The **Publications Committee** creates the *Kala Pointer* out of thin air (maybe hot air?) [Depends on whose article it is. ED] every month. If you know how to edit, write, proofread or use Adobe InDesign®, or have had experience producing or publishing newsletters, these folks would really appreciate your help. Contact Suzanne Eggleston at 503.880.2289.

The committee most responsible for Kala Point being a beautiful, wooded community is the **Tree Committee**. They handle requests from KPOA members regarding tree cutting and trimming whether the tree is on the member's property or on a neighbor's. Although they meet only once a month, how long they meet depends upon the number of requests they have received. They usually make site visits to look at each requested action. If you want to get to know each lot in Kala Point and meet many of your fellow members, this committee will fulfill your desire.

Every one of the committees needs help. Every one of the committees helps KPOA. So make a New Year's Resolution and do something to help your community: join a committee now! ♦

---

## Letters to the Editor

Dear Friends:

This is just a note to say how well you are doing the *Kala Pointer*. I like the new format which is bright and cheery besides well-written and informative. So, give yourselves a big pat on the back – and WELL DONE!

*Karl Bach* ♦

**EPC EXPO**  
**September 28**  
**“Act Fast, Act Smart”**  
 Anne Englander, EPC Chair

Do you know what to do in an active shooter situation? When someone is bleeding badly? When someone is traumatized? When the phones are out and you or your neighbor need help? When you have just five minutes to evacuate your home?

We all hope we'll never confront these situations, but if we do, we need to know how to act fast and act smart. At this year's EPC Emergency Preparedness Expo, experts will step you through these emergencies: six professionals, all in one place on one afternoon right here in Kala Point.

Mark your calendars now for this great learning opportunity for us all: Saturday, September 28, from 12–5 p.m. at the Clubhouse.

Here's what we're offering:

*In the Main Room*

**Speakers:**

Each speaker will cover a specific kind of emergency and tell you how to deal with it.

- Willie Bence, Jefferson County Dept. of Emergency Management – Community Self-Reliance
- Mark Miller – Emergency Communications
- East Jefferson Fire Rescue – Evacuating Your Home: Ready-Set-Go!
- Jefferson County Sheriff's Office – Surviving an Active Shooter
- Laura Werner – Disaster and Emotional First Aid
- Gail Fraser Chanpong, Red Cross – Stop the Bleed

Come and go as you like, but we think you'll want to check them all out.

*In the Fireplace Room*

**Information stations:**

Are you just beginning to think about getting prepared? Or did you start, but get stuck? We'll have good ideas to share on basic emergency preparations and actionable step-by-step checklists of what to do when — like pulling together your “grab and go” kit, building your food and first aid supplies, and evacuating Kala Point in a fire or other disaster. And we'll tell you what EPC is up to, and how you can help us help you.

**Radios and sample kits:**

Do you have an FRS walkie-talkie radio to communicate with your neighbors when telephones, cell phones and the Internet are out? We'll have them for sale (\$10 including batteries), preprogrammed for your

zone and ready to go. And to jump-start your emergency preparations, we'll have three kinds of kits – emergency, first aid and sanitation – on display, and information on how you can order them.

**Wine social:**

After our last speaker, we'll offer toasts to Kala Point emergency preparedness with wine provided by kind donors who prefer to remain anonymous (thank you!). Come early to the Expo and, by all means, plan to stay 'til 5 p.m.!

More details to come. Questions in the meantime? Contact Anne Englander [anne.englisher@gmail.com](mailto:anne.englisher@gmail.com), or at 360.316.9339.

See you on September 28! ♦

## Cassandra Cache Initiative Town Hall Meeting to be Held September 11

So who was Cassandra? And why do we have an important and potentially life-saving Kala Point initiative named after her?

That will be just part of the discussion at the Town Hall meeting for all Kala Point residents on Wednesday, September 11, from 6:30–8 p.m. at the Clubhouse.

We all should know that we won't be able to count on federal, state, or even county aid in an area-wide disaster; Kala Point and its residents will have to rely on the resources we have on hand when, and for a long time after, disaster hits. Over the past year the Emergency Preparedness Committee has researched and developed a proposal to create a stockpile of emergency supplies — called the Cassandra cache — that will be built up and held in reserve for deployment throughout Kala Point.

The KPOA Board has given approval for the EPC to go out into the community and present the proposal prior to any vote later this year.

At the Town Hall, EPC Chair Anne Englander will answer these questions about the initiative:

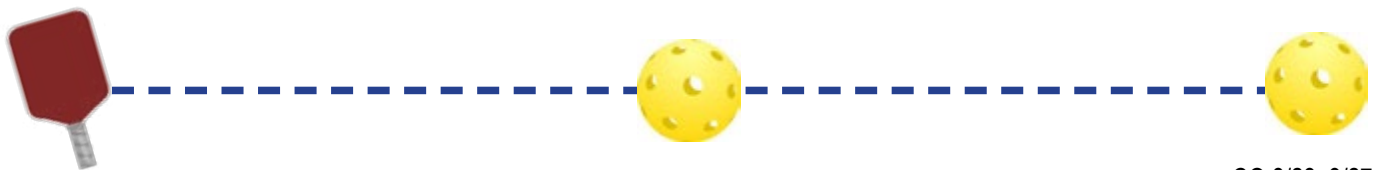
- What is the Cassandra cache, and what's in it?
- Why do we need it, even if we are individually prepared?
- When will we implement it?
- How will we pay for it?
- What will it cost each member?

Attend the session on September 11, and engage in the conversation about this significant new emergency preparedness effort. ♦



If you play pickleball or want to learn more about playing on the best courts in town (aka Kala Point), plan on attending this fun event!

<p><b>Thursday, September 26, 4:30–7 p.m.</b></p>	<p>BYOB, glasses and an appetizer to share.</p> <p>We'll discuss calendar scheduling as well as:</p> <ul style="list-style-type: none"> <li>• ideas for upcoming events</li> <li>• player clinics</li> <li>• drills</li> <li>• tournaments</li> <li>• social events</li> </ul>	<p>Bring your questions, suggestions and fun ideas.</p>
<p><b>Kala Point Clubhouse</b></p>		<p>Contact Char Quandt with questions at 360.531.4226 or <a href="mailto:Charlene.quandt@gmail.com">Charlene.quandt@gmail.com</a></p>

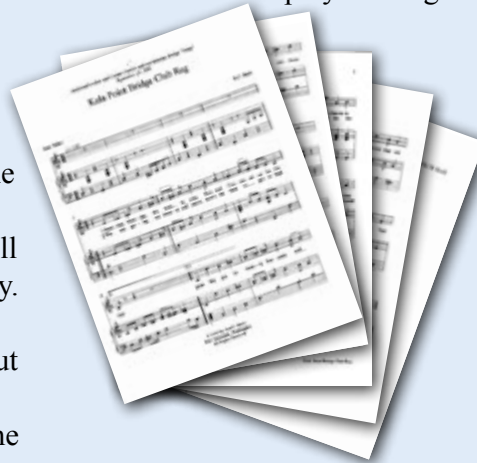


# The Kala Point Bridge Club

Joan Fisher

The Club began in 1988 with original players Joyce and Paul Rosenquist, Marilyn Stevenson and Joan Fisher. I am the sole survivor. In the early 90s, I welcomed all new Kala Point residents. The first question I asked, "Do you play bridge?" We soon had enough players to use the main room. If the clubhouse was closed for any reason we met at private homes. The only time we didn't play was when Christmas Eve or Christmas Day fell on a Monday. This is true to this day. We play through rain, wind, sleet, and snow! It's not a Monday without bridge.

We meet weekly at 11 a.m. at the clubhouse. Play is usually over by 3:15 p.m. Members pay for all their expenses either through dues or the 50-cent fee to play. Everyone brings their own lunch. Coffee and treats are provided. Each member takes a turn bringing treats and taking the reservation book home. This is a collective effort. Many do extra work to keep the bridge club running smoothly such as scheduling, finance, set-up and



more. For example, Ken and Connie Fersch, long-time members, now deceased, did it all!

Member Karl Bach composed the "Kala Point Bridge Club Rag" (pictured here) with lyrics by Joan Fisher, to honor Connie and Ken for their service.

The system we play is "Chicago." Each hand played is a game try. First, second, and third highest scores win a money prize. The low score gets their 50 cents back to try again next week!

We usually have four-six tables, and occasionally seven. Each player has a numbered, printed schedule telling the table number and the partner's number. There are 24 hands total.

Currently there are 32 active players and a list of 8 substitutes. More than half the group has played between 10-27 years.

The bridge club at Kala Point is open to all residents, their guests, and time-shares. We play social bridge to have fun and we always welcome new players. Bridge is one of the best ways to keep your memory. It is a "mind-sport." Not only that, I have made wonderful friends. They are my extended family. ♦

## PUD Offices are Moving!

*For Immediate Release...*

PUD Customer Service office moves to

**210 Four Corners Road  
Port Townsend, WA 98368**

Starting Monday,  
September 16 at 1 p.m.

[Click Here for Directions](#)



**PUD**  
Jefferson County  
Public Utility District

Board of Commissioners:  
Jeff Randall, District 1  
Kenneth Collins, District 2  
Dan Toepper, District 3  
Kevin Streett, General Manager

August 27, 2019

For more information, contact:  
Will O'Donnell  
Communications Manager  
(360) 385-8369

**FOR IMMEDIATE RELEASE**

**PUD Customer Service Office Moves Ahead of Construction**

Starting Monday, September 16th, 2019, customers wishing to pay bills or speak in person to a customer service representative will need to come to 210 Four Corners Rd.

In preparation for planned remodeling and expansion, the PUD's 310 Four Corners Rd office will close to the public at noon on Friday, Sept. 13th. Customer service will reopen in its new location at 1pm on Monday, Sept 16th.

The new office will house both customer service and some administrative staff in a semi-permanent, triple-wide office building located on a smaller, PUD-owned lot about 500 feet north of its longtime operations center.

"All PUD functions involving the public have to be moved off the main campus during construction," said PUD General Manager Kevin Streett. "In August, we moved engineering to our Hadlock office at 211 B Chimacum Rd. Regular board meetings are held at Jefferson Transit, and any special meetings of the commissioners take place at the Chimacum Fire Hall."

"It's not ideal," said Streett, "but we've been spread out like this for years. One of the main goals of our facility construction project is to try to bring all of our staff and all of our meetings onto one campus."

The PUD's estimated \$4.4 million remodel and expansion project is expected to begin Oct 1st. Bidding closed Aug. 29th, and contractor selection is scheduled for the Sept. 17th meeting of the board of commissioners. The improved and expanded 310 Four Corners Rd. campus will reopen to the public in 2021.

Ph (360) 385-8300 jeffpud.org 310 Four Corners Road, Port Townsend, WA 98368  
Public Utility District No. 1 of Jefferson County is an Equal Opportunity Provider and Employer



## R/V *Laffing Lady* at Kala Point

*Paul Loubere*

Some of you may have noticed a unique-looking sailboat riding offshore opposite the gazebo area. She is the R/V (research vessel) *Laffing Lady* that is here to support oceanographic research in Port Townsend Bay. The *Lady* is a product of long-time PT resident and boat builder Willy Stark. She is constructed from a re-purposed oak and cedar hull and an interesting mix of materials from local sources.



*Laffing Lady* would not be your first pick if you were racing, but broad in the beam and extra sturdy makes her well-suited to be a research platform. Originally, Willy's plan had been to sail across the North Pacific, but meeting another lady persuaded him to stay in PT, putting aside maritime wandering.

I am an oceanographer, retired from research in global climate change, whose work took me to the equatorial Pacific, the Gulf of Mexico, the North

Atlantic and the Arctic Ocean. Now living here, I have been interested in how our maritime environment came to be. I took the opportunity to engage Willy in the exploration of bluff and bay development around here since the last Ice Age, 11,000 years ago. Port Townsend Bay has been under ice, exposed as dry land, and drowned (more than once). Her bluffs record ice sheet advance and retreat as well as shoreline engagement with the advancing ocean.

Now *Laffing Lady*, outfitted with data-collection equipment, is adding to what we know of the Bay's marine environments and the complex geological history of our area. Data is also being gathered on seabed environments and water column properties (in cooperation with the Port Townsend Marine Science Center). Who knows? Her contributions may even reveal where the best crab are hiding. ♦

## On Getting Old

Reporters interviewing a 104-year-old woman:

“What do you think is the best thing about being 104?” the reporter asked.

She simply replied, “No peer pressure.”

## Learn First Aid and Help Save Lives

*Terry Rose, First Aid Team Lead*

Do you know what to do if someone is having a heart attack or a stroke? Do you know how to treat wounds or fractures? If you've never taken a first aid course or if you want to refresh your skills, register now for a basic first aid class being held on Thursday, November 7, from 1–5 p.m. at the Clubhouse. KPOA, the Emergency Preparedness Committee and the First Aid Team have made it a priority to offer basic first aid training classes for residents in our community. The class on November 7 is free, limited to 15 people and offered on a first-come, first-served basis.

Previous sessions have filled with a waiting list. Act now and reserve your spot by contacting Terry Rose by phone at 360.385.1940 or by email at [rosenkatz@wavecable.com](mailto:rosenkatz@wavecable.com). ♦

## Board Committee Reports

### Emergency Preparedness Committee

The EPC met Thursday, August 1. The following items were discussed:

- Anne Englander will continue as chair of the EPC
- EPC has two new members, Gail White and Monty McCoy, who are co-captains for Zone 18
- Ten zones within Kala Point have held summer Map Your Neighborhood gatherings; sessions still need to be set up in a few remaining zones
- The number of residents who have filled out the Emergency Information Sheets is low; consideration is given as to how to further encourage residents to fill out the forms
- The EPC website is continuing to add content, including new articles, videos and resources related to emergency preparedness
- EJFR has started visiting and identifying potential risks in the homes of 49 owners who signed up for Fire Wise Assessments and offered their property as potential sites for upcoming EJFR training exercises
- The Fire Wise Ad Hoc Committee, which includes the Board representatives from the Architectural, Tree, Emergency Preparedness and Grounds committee, will soon meet to discuss how to educate members on wildfire risk reduction
- EPC will present a proposal to the Board in August for the Cassandra cache initiative, involving the creation of a stockpile of emergency supplies and equipment that will be built up and held in reserve for deployment throughout Kala Point in the event of a local or regional disaster
- Those interested in CERT courses (for community volunteers who serve as a bridge between injured people and professional aid personnel) should watch for the next training session. CERT is available to anyone regardless of physical ability.
- An Advanced CERT Conference was attended by Joe Englander who reported that presentations by FEMA, National Guard and Sherriff's Office personnel emphasized that residents should plan for being "On Your Own" for up to 60 days
- The 2019 EXPO on Saturday, September 28, will have lectures (the speaker list is being finalized) from experts in emergency response; we will also have tables in the Fireplace room with information about a variety of EP topics

### Publications Committee

The committee met on August 5. The following items were discussed:

- Addition to committee of Scott Rovanpera as board representative
- Experience of layout editor during production of August issue
- Article ideas for September issue
- The updating of the KPOA website and the possibility of matching the style of the new EPC website
  - Joe Worrall and Keith Larson asked for recommendations from the committee
  - Two additional meetings were set up during August to discuss and develop website recommendations. ♦

---

### Continued from Page 6 "Fairy Tales and Nightmares"

I heard a lot more, all in the same vein. When the CSZ event happens, we'll have to already have prepared ourselves for being isolated for a long time, much longer than we thought. But what about the County, aren't they going to be there for us? Basically they, too, are telling us to prepare to be on our own. There aren't enough EMS first responders in JeffCo even without a CZS event — and even if they could get to us, they will probably be working in places where a larger number of lives are threatened such as at a collapsed school or grocery store. The County has not stockpiled any food or other supplies; they expect neighborhoods to do it for themselves. So if you are injured or need help or don't have enough supplies, your only hope will be Kala Point's Emergency Preparedness Committee and its First Aid Team. And they already know they need your help. Frankly, we don't have enough volunteers trained in first aid to temporarily take on the duties of first responders for all of Kala Point and at this point we don't have enough first aid supplies for all of Kala Point, either.

I came away from that conference thinking that I had to ring the alarm bell, I had to let you know. Please start preparing because it will be really, really ugly if you don't. If you think someone is coming, you believe in fairy tales. ♦



## Volunteers Needed: Disaster Airlift Response Team Exercise

NPREP (National Preparedness for Response Exercise Program) Leads, Co-leads, and Friends:

This is an exciting opportunity to participate in a two-state, multi-county exercise right in our own backyard. On Saturday, September 21, volunteer pilots in the Disaster Airlift Response Team (DART) program will bring about 1,000 pounds of donated food and nonperishable goods to Jefferson County International Airport from Bellingham. Participating aircraft will be from Clallam, Kitsap and Jefferson counties, Walla Walla, and even California.

DART pilots train for major earthquakes and other disasters to provide rescue, medical assistance and critical medical supplies in time of need. We are using the donated food to simulate the transport of supplies and helping feed needy families at the same time. Only through drills like this can we ensure that this resource will be truly ready to help our whole state in the aftermath of what could be our nation's worst disaster.

The donations will be distributed to Jefferson County food banks. Each year the receiving county changes, so this is a rare opportunity to participate close to home.

The DART program is looking for lots of volunteers to help that day. If you have already attended the DART ground training, great — they need you. Training will also be provided on the spot, so don't be shy. People are needed to be safety observers, direct aircraft, complete documentation and unload the aircraft. Not all jobs require physical strength; people of all abilities can participate meaningfully. Everyone who shows up will have a job.

The NPREP team strongly encourages you to participate. Please forward this to your neighborhood members. You do not have to participate as a neighborhood unit; individual participation is encouraged. You should bring your lunch or plan to buy something at the Spruce Goose as the exercise runs most of the day.

*The schedule is as follows:*

- 9 a.m.** Safety briefing and training (please arrive a little earlier to be ready by 9 a.m.)
- 11 a.m.** JeffCo DART pilots depart for food
- 11:30 a.m.** First incoming flights arrive with food
- 3 p.m.** The exercise should be complete

We hope to see lots of you there!

Sincerely,

*Your NPREP Team* ♦

## JPUD Board of Commissioners Meeting Report

*August 6, 2019*

**Scott Rovanpera**

Commissioners have been advised that Jefferson Public Utility District No. 1 (JPUD) staff would like to create a fourth water rate tier for those customers using more than 30,000 gallons of water per month. The rate, set at \$1 per 100 cubic foot water, is an economic penalty for those who use higher than normal volumes of water.

Within the JPUD, there are 15 — approximately 1% — customers who would be affected by this fourth tier rate. The average consumption of these 15 customers is 43,658 gallons per month. One customer has been metered at over 100,000 gallons of water each month.

JPUD General Manager Kevin Streett has recommended that nine non-represented staff employees have their salaries increased to the industry standard that applies to their job descriptions. He argued that these employees provide critical support to JPUD activities and should be paid at a commensurate level. The Board approved the salary increase for these nine staff members. Other staff members in the non-represented group, approximately 16 employees, will receive their annual cost of living adjustment (COLA).

JPUD staff presented the first read of the water leak policy for review by the commissioners. The policy would define a leak on the customer's side of the meter (10,000 gallons above the average water usage), proof of leak repair by the customer, on-site verification of the leak repair by JPUD personnel, and assign a loss cost of \$0.29 per 100 gallons for the estimated water leakage.

Staff requested that the commissioners increase the tree-trimming budget by \$250,000 through the end of 2019 to continue tree trimming along the electrical transmission line corridor. To meet the tree trimming target now, a shift of these funds is necessary from the general fund; the Board approved the transfer.

Commissioner Dan Toepper presented a communication policy as a first read for the commissioners. This policy was drawn from the RCW (Revised Code of Washington) regulations and would serve as a template on how JPUD communicates with its internal and external customers. The Board suggested that this policy be discussed at the upcoming Strategic Planning workshop or at a special meeting. ♦

## Neighborhood Classified Ads

Neighborhood Classified Ads cost only ten cents per word.  
Please pay at the Kala Point office when you submit your ad.

### HOUSE WANTED IN KALA POINT

Current Kala Point homeowners are looking to downsize from a 2,400 square-foot home to a 2- or 3-bedroom single-level home.

Please call if you are interested in selling your home.

**Rich & Judy Munden • (360) 385-9299**

### ONE-OF-A-KIND DOLL CLOTHING

For 12" to 30" dolls.

See my designer, hand-sewn collection on **Etsy.com** at "wonderfuldollclothes".

More than 100 choices for that special person.

Special orders welcomed. Sharon Ross 360-385-2365

## Commercial Advertisers

When you patronize one of our advertisers, please tell them you saw their ad in the *Kala Pointer*. We want them to know their advertising dollars are well spent. If you're satisfied, please tell your friends and neighbors. If you're not satisfied, please tell the advertiser.

### PROSSER PAINTING & CONSTRUCTION

**360-710-6138**



**Glenn\_prosser@hotmail.com**

**Www.ProsserDesignBuild.com**

PROSSPC895NR



**R&M Services**  
Handyman

**James Kenoyer**  
Owner

360-301-2683

430 Montgomery Ln.  
Port Ludlow, WA. 98365

randmservicesrm@gmail.com  
Lic. # RMSEERS\*83583/ Insured and Bonded

#### R&M Services:

I install garbage disposals, faucets, interior light fixtures, etc. I also restring window-blinds.

# Jefferson Healthcare

[JeffersonHealthcare.org](http://JeffersonHealthcare.org)

Wellness activities can be an important part of the healing process or disease prevention. Classes are held at the Jefferson Healthcare Wellness Center. Registration required.

**Therapeutic Yoga** | Want to feel refreshed and relaxed while getting a workout? This gentle class, taught by an occupational therapist, will address whole body movements, strengthening and balance.

WHEN Tuesdays & Thursdays, 4:45 to 5:30 pm

COST \$5 per class, punch card available for purchase at 834 Sheridan Street (waterside entrance)

**Exercise to Beat Back Pain 8-week series** | Following the traditions of yoga and Pilates, this class is focused on using exercise to decrease—even eliminate—low back pain.

WHEN Wednesday & Fridays, 10:15 to 11:15 am, starts September 4

COST \$160 for 16 classes

Jefferson Healthcare Wellness Center  
1230 W. Sims Way (QFC Plaza), Port Townsend

Register: 360.385.2200 extension 1223



## ecoclean pressurewashing services

• driveways • sidewalks • decks & more

GENE YOCUM  
geneyocum@gmail.com

360.531.4821

## *Sudden Clarity*

Professional Window Cleaning

Jackson Mifsud – Lukas Hubbard

(360) 643-0202 (360) 531-3651

Free estimates and demonstration window

Licensed and Insured

5% of wages donated to

Habitat for Humanity Jefferson County





**360.385.7155**

**360.457.4121**

800.743.2515

- Septic Pumping & Inspection
- Electronic Tank Locator
- Video Inspection
- Bonded & Insured
- Certified Maintenance & Monitoring

**PORTABLE RESTROOM RENTALS**  
Delivered & Serviced  
Special Events • Construction • Farms

[www.goodmansanitationinc.com](http://www.goodmansanitationinc.com)  
*Locally owned and serving the Olympic Peninsula since 1954*

## Winspear Construction Services LLC

- General Contractor - Small and Medium Projects
- Painting and Deck Refinishing & Repair
  - Interior Hardwood Installation, Repair and Refinishing, including Stairs
- Carpentry, Pressure Washing and more...
- Free Estimates - Licensed, Insured and Bonded

Contact David at 360-797-5254  
[dawinspear@gmail.com](mailto:dawinspear@gmail.com)

Contractor #WINSPCS830LB

# ***Kala Pointer* Newsletter**

**Kala Point Owners Association**

**1760 Kala Point Drive, Port Townsend, WA 98368**

## **KPOA Facility Hours**

### **Administration Office**

Monday – Thursday 8:30 a.m. – 2:30 p.m.

Friday 8:30 a.m. – 1 p.m.

March 31 – October 16, 2019

### **Clubhouse**

Monday – Sunday 9 a.m. – 9 p.m.

### **Pool**

Monday – Sunday 9 a.m. – 8:45 p.m.

### **Jacuzzi and Spa**

Monday – Sunday 9 a.m. – 8:45 p.m.