

# Kala Pointer

A MONTHLY PUBLICATION OF THE KALA POINT OWNERS ASSOCIATION

May 2024



## In This Issue

- **President's Message**
- **Board Meeting Summary**
- **Letters to the Editor**
- **Kala Cares**
- **Application for Board Seat**
- **Newcomer's Social**
- **Community Yard Sale**
- **Come to a Social Plus Meeting**
- **Hospice Presentation**
- **Low Tide Beach Walk**
- **May Plant Sales**
- **Safer/More Connected KP**
- **Ped, Driver, and Cyclist Safety**
- **Pedestrian Safety Meeting**
- **Pickleball Event**
- **Get to Know Your Neighbors**
- **Silver Dune-Digger Bees**
- **Pétanque à la Plage**
- **Committee Close-Up: EPC**
- **EJFR Fundraiser**
- **Band-Tailed Pigeons**
- **Committee Reports**
- **Through the Lens**
- **Ads**

---

## From the Desk of KPOA President

*[Mark Lannon](#), Board President*

I am very sad to tell you that our colleague and friend, Director Joseph Reeves, passed away on April 17 with his partner Eve by his side. The following message from Joseph was received by the Kala Point Board of Directors on March 29. Joseph's courage and perspective is a lesson for all of us. Rest in peace, my friend.

*My Dear Colleagues:*

*I've been diagnosed with Stage 4 pancreatic cancer. Treatment is of little use; hopefully, I'll be at home for the end game.*

*Regretfully, I will resign from the KPOA Board of Directors following the completion of the April Board meeting and the subsequent Non-Compliance Hearing.*

*I'm sorry I won't be able to work with you any longer. Our discussions are stimulating and fruitful. I know each of us want what we feel is best for Kala Point, and I have tried to keep that in mind when my version of the issue doesn't always align with others. Yes, we have work to do, and some of that work will be challenging. I'd like to help, but won't have the energy or focus to do so in a few weeks. Thank you for the work you do for our community.*

*Kala Point has been a great place to live and one of two places in the world that I would like my life to end — the other is a small island in Lynn Canal north of Juneau. We have an exceptional community filled with interesting people and beautiful scenery. Many of those people have stepped in to serve on our committees and this Board. I respect and admire all of those who do.*

*I've lived the life I wanted, where I wanted and with wonderful friends. It has been a great ride. I have no regrets.*

*Sincerely,  
Joseph Reeves ♦*



Blue on Blue: *Gary Obermeyer*

---

### ***Kala Pointer Staff***

*Editor:* Laurie Engelbeck

*Copy Editors:* Suzanne Eggleston, Margaret McGaughey, Hilary Newell, Whit Porter, Pamela Thompson

*Photo Editor:* Pamela Thompson

*Chair:* Laurie Engelbeck

*Secretary:* Margaret McGaughey

### ***May Contributors***

Marilyn Berry  
Phil Brodt  
Janine Cortell  
Katharine Donnelly  
Suzanne Eggleston  
Laurie Engelbeck  
George Engelbeck  
Kris Ethington  
Geoff Genther  
W.R. Gentry  
Mark Lannon  
Michael Machette  
Pat Miles  
Vicky Miller  
Dale Moses

Cheri Muller  
Gary Obermeyer  
Char Quandt  
Scott Rovanpera  
Terry Rose  
Kevin Skolrud  
Social Plus  
Sue Stanton  
Pamela Thompson  
Ann Woodside  
Diana Zinn

*Cover Photo:* Kris Ethington

---

#### **Next Newsletter Deadline:**

May19 for the  
June Issue

#### **Submit your articles to:**

[YourKalaPointer@kalapoint.org](mailto:YourKalaPointer@kalapoint.org)

#### **Our Letter to the Editor policy**

Look under section 8.

---

The Kala Point community is a common-interest residential homeowner association (HOA). When purchasing or building within Kala Point, homeowners agree to follow the HOA's

governing documents, which include: Conditions, Covenants and Restrictions of Record (CC&Rs); Rules and Regulations; Bylaws; and detailed Administrative Policies and Procedures (APPs). APPs are Board-enacted rules. The protective umbrella of these governing documents works in the best interest of all homeowners ensuring higher standards of neighborhood appearance and enhancing the collective value of the homes.

### 2024 Committee Chairs

Architectural [Pat Miles](#)

BMAC [Scott Love](#)

Elections [Geoff Genter](#)

Emergency Preparedness (EPC) [Mark Miller](#)

Finance [Kevin Skolrud](#)

First Aid [Terry Rose](#)

Grounds [Scott Rovanpera](#)

Internal Control [David Harrah](#)

Personnel: [Mark Lannon](#)

Project Study: [Sue Stanton](#)

Publications [Laurie Engelbeck](#)

Social Plus [Natalie Wilson](#)

Tree [Mike Harte](#)

### 2024 Board of Directors

Click on a name to email

President [Mark Lannon](#)

Vice President: [Dan Kimball](#)

Secretary [Sue Stanton](#)

Director & CFO [Kevin Skolrud](#)

Director [Marilyn Berry](#)

Director [Bob Goldstein](#)

Director [Pat Miles](#)

Director [Dale Moses](#)

[Click here](#) to email the entire board

---

### Hard Copies and Magnification Tip

To obtain a hard copy of the *Kala Pointer*, visit the Administration Office or the Clubhouse. To view the newsletter on the Kala Point website, visit [kalapoint.org/kalapointer/view-past-issues/](http://kalapoint.org/kalapointer/view-past-issues/). (You must be logged in to view.)

To increase your viewing magnification: on a Mac, click and hold "+" and "command" at the same time; on a PC, click and hold "+" and "Ctrl."

### Special Notice Emails

If you are not receiving special notice emails from KPOA, please contact the Administration staff at 360.385.0814.

### Attention Email Users

Since the *Kala Pointer* is larger than most emails, Gmail and some other email services automatically cut it off at a certain point. To ensure you see the entire newsletter, click on the "View Entire Message" link if you see it at the bottom of the email. ♦

---

## April Board Meeting Summary

[Sue Stanton](#), Board Secretary

The April KPOA Board meeting was held April 9, 2024, at 1:30 p.m. It was a hybrid meeting held in person at the Clubhouse and over Zoom.

### Board members in attendance:

M. Lannon, vice president; K. Skolrud, CFO; S. Stanton, secretary; Directors D. Kimball,

P. Miles, D. Moses, M. Berry, B. Goldstein, J. Reeves, president, attended over Zoom. Also in attendance were General Manager K. Larson, and 18 members: nine self-identified individuals on Zoom, and nine in person.

A quorum being present, the meeting was called to order.

President J. Reeves announced his resignation from the Board effective at the end of the April 9, 2024, Board meeting due to health issues. The Board recognized Joseph for his service to KPOA and its members, wishing him all the best.

The April 2024 agenda and the minutes of the March 12, 2024, Board meeting were approved as amended. It was announced that the deadline for articles for the May *Kala Pointer* was April 19, 2024. The monthly Inquiry and Correspondence Report was reviewed and discussed. The Consent Calendar was approved.

### **General Manager's Report**

- Storage and Small Boat rental agreements/invoices to be mailed by May 1
- Gates will be open Saturday, April 13, for the EPC EXPO
- BMAC (Bluff Management Advisory Committee) will be updating their APP to account for management and oversight of the stormwater drainage system along Kala Heights Drive

### **Pier Project Update**

- The Design Plan draft for the pier is expected by the end of April

### **Clubhouse**

- The pool opened April 1, 2024
- The pool will be closed Tuesday, April 23, 2024, to replace the filtration system and is expected to reopen on Wednesday, April 24, 2024

### **Finance**

#### **Assessment Collection Report**

The 2024 Assessment Collection Report was presented to the Board reflecting on current assessments collected and outstanding balances due

- 2024 Reserve Projects approved:
- Replacement of two garage doors at the maintenance building
- Asphalt repairs
- Painting of the Administration Building

### **Grounds Report**

- Mowing and weed eating is underway
- Moss control continues on all roofs, parking areas, and some cul-de-sacs as required
- Buoy chains have been replaced with a life expectancy of seven years

### **Pedestrian Safety Ad-Hoc Report**

- Locations for crosswalks and stop bars throughout the property have been identified
- A proposed alternative walking path along Kala Point Drive was defined
- Traffic paint, reflective additive to paint, crosswalk and stop bar templates have been purchased
- Communication regarding overgrown laurel hedges has been initiated



- Research of appropriate signage along the walking path has begun

### **Safety/Staff Meeting Report**

- A full staff meeting was held on March 21
- Staff members have completed an online Pool & Spa Course, presented by Jefferson County Health Department. Certificates of completion have been posted at the Clubhouse facility

### **Old Business**

- Senate Bill 5796 — Washington Uniform Common Interest Ownership Act — 64.90 was signed into law March 28, 2024, effective January 2028. D. Kimball is monitoring the 2024 update to RCW (Revised Code of Washington) 64.90.
- Additional standard recommendation: The Board approved a motion to create a new category of documents named “Forms” to be located on the KPOA website
- The non-compliance hearing requested by the Architectural Committee was canceled

### **New Business**

- The Board approved M. Lannon as president and D. Kimball as vice president to the KPOA Board of Directors
- 
- The Board goals for 2024 are to maintain a two-hour Board meeting, standardize formatting of APPs, review the elections process, and increase membership emails and *Kala Pointer* distribution list by 10 percent. Committee reports are posted on the Board of Directors landing page at [www.kalapoint.org](http://www.kalapoint.org) and included in the monthly *Kala Pointer*.
- 
- Member comments commending leadership of the Publications Committee in its efforts to increase readership, Zoom attendees unable to hear speakers, and pro and con comments of a paved walking path in Kala Point were noted by the Board.
- 
- The main business of the April regular Board being completed, the Board adjourned until the May meeting. For more detail about the meeting, supporting documents, and a recording of the board meeting, visit the Board of Director’s landing page on the [Kala Point website](#).

**Next Board Meeting:** May 14, at 3 p.m. in the Clubhouse Main Room. ♦

---

## **Looking for Committee Reports?**

They are located near the end of this newsletter. Also, full minutes from each committee meeting are available under Boards and Committees on the [KPOA website](#). ♦

---

## **Letter to the Editor**

**KPOA Doesn’t Need Online Voting**

I have been a technology advocate since before the Internet or the World Wide Web became a part of our daily lives. I work in cyberspace: designing and maintaining websites, managing online surveys, developing virtual courses, facilitating collaborative workgroups, etc. KPOA Residents who know me would likely assume that I prefer the convenience of electronic voting.



Well, not necessarily!

Instead, I'm glad knowing that the Elections Committee (EC) is proposing that this year's election be conducted with paper ballots, vote-by-mail, and in-house vote tabulation.

As pointed out by EC Chair Geoff Genter in the April 2024 *Kala Pointer*, KPOA elections were conducted exclusively by paper ballot until 2016, when the Board approved a plan to shift to online voting. The decision was based largely on claims of greater efficiency and increased member engagement. The associated costs for an outside vendor became part of KPOA's operating budget (currently approaching \$4K/election) which ironically became the lead argument for combining two member meetings into one Annual Meeting in 2021.

Fast forward to 2023, a diligent EC discovered that KPOA rules were never amended to authorize electronic voting. It's not yet clear whether the KPOA Board will submit a member resolution to properly amend KPOA rules, nor what the members would decide if asked directly to approve the cost for an outside vendor. It's a near certainty that the 2024 KPOA election will be conducted via mail-in ballots, like last year. Open to question now is who will collect and who will count the votes?

Despite my decades-long career as a technology advocate (including as Board rep to the KPOA Website Ad Hoc Committee), I see the EC proposal as both a means to save money and to expand opportunities for a community experience. Sign me up!

Gary Obermeyer, Lot 121 ♦

---

## Questions for the *Kala Pointer* Staff

*Laurie Engelbeck, Publications Committee Chair*

The *Kala Pointer* staff has received questions from several residents about how to submit articles and photos.

### **1) When is the deadline (or when is the actual/drop-dead deadline) for articles for the *Kala Pointer*?**

As stated in every edition of the *Kala Pointer* and in in the minutes of every KPOA Board meeting, the **deadline for submissions is always the 19th of the month**. Send submissions to [yourkalapointer@kalapoint.org](mailto:yourkalapointer@kalapoint.org).

This deadline may seem early, but the *Kala Pointer* staff needs that time to edit and layout the newsletter that is distributed on the first day of the following month. Our team of volunteers needs the time to review and edit all articles, and for the photo editor to review, crop, or resize photos. We check all the links, check for spelling of residents' names, and verify names of writers and photographers when credits are not included with the stories or photos.

After all articles have been reviewed by at least two editors, the layout can begin. The layout editor for the month gets to decide on colors and placement of articles and photos. After the layout is done, including all the photos and ads, the draft newsletter is sent to the team and to the KPOA administration for review and final proofreading.

We know that some events, including some committee meetings, happen at the end of the month. If we know that articles will be coming and their submissions are sent in immediately after the event or meeting, we can usually include these. However, we reserve the right to hold the article for the following month.

## 2) How do I submit photos to go with an article?

Please submit all photos to [Photos@kalapoint.org](mailto:Photos@kalapoint.org). Please include the name of the photographer and the caption, if any. Our photo editor can then resize or edit the photos if necessary.

Please title your email with the same name as your article and note in your email which article it goes with, and we will be certain to include the photo with the article. When the photos are embedded in the text of the article, these are sometimes hard to extract. We have to copy and separate them, and the quality of the photo is often noticeably reduced.

We appreciate the submissions from our residents and want to create the best and most accurate newsletter that we can. ♦

---

## Something on Your Mind?

Send a letter to the editor! The easiest way to do so is by emailing [yourkalapointer@kalapoint.org](mailto:yourkalapointer@kalapoint.org).

To review the submission guidelines for letters, refer to Section 8 in the [Publications Committee's APPs](#). ♦

---

## Kala Cares

Joseph Reeves  
James Edward Therou



KALA POINT

The Board of Directors is soliciting the KPOA membership to fill the open Board seat for a term ending December 2025.

Please email the Kala Point's general manager at [gm\\_larson@kalapoint.org](mailto:gm_larson@kalapoint.org) prior to May 30, 2024, with the following information:



*I submit my intent to stand for a position on the KPOA Board of Directors to fill the vacant Board seat with a term ending December 2025. I attest that I am eligible to be a KPOA Director, and that I will accept the position if offered.*

Name:

Address:

Phone:

Email:

Date:



---

## All-Community Newcomers' Social: New Date

*Katharine Donnelly and Vicky Miller, Social Plus Committee*

**Saturday, May 18 (note date change)**

5:30–7:30 p.m. in the Clubhouse

Come meet your new neighbors and visit with old friends.  
Bring an appetizer to share and your choice of beverage.

There's no charge and no RSVP required. ◆

---

## 2024 Kala Point Community-Wide Yard Sale Saturday, June 1, 9 a.m.–3 p.m.

*Diana Zinn, Garage Sale chair*

It's time for The Kala Point Community-Wide Yard Sale! The event will take place on Saturday, June 1, from 9 a.m.–3 p.m. If you would like to participate in this year's sale and be listed on the address flyer, email us at: [kalapointyardsale@yahoo.com](mailto:kalapointyardsale@yahoo.com)

The gate will be open throughout the sale. We will publish notices in the *PT Leader* and *PDN* as well as social media such as Facebook and Nextdoor.

You are responsible for your own sale. Put out large signs on Kala Point Drive or wherever people will see them and direct them to your house. We will get them in the gate; the rest is up to you.

So clean out those closets and garages, mark your items well, have fun, and hope for good weather. Thank you all for driving carefully.

Contact me if you have any questions at the email above. This is a Social Plus sponsored event. ◆

---

## Come to a Social Plus Meeting!

*Social Plus Committee*

Are you a person who likes to have fun? Do you enjoy meeting new friends? Do you have some fun social event ideas for our neighborhood? Maybe you are interested in assisting Social Plus committee for an event? Are you looking for a fun volunteer opportunity to serve your community?

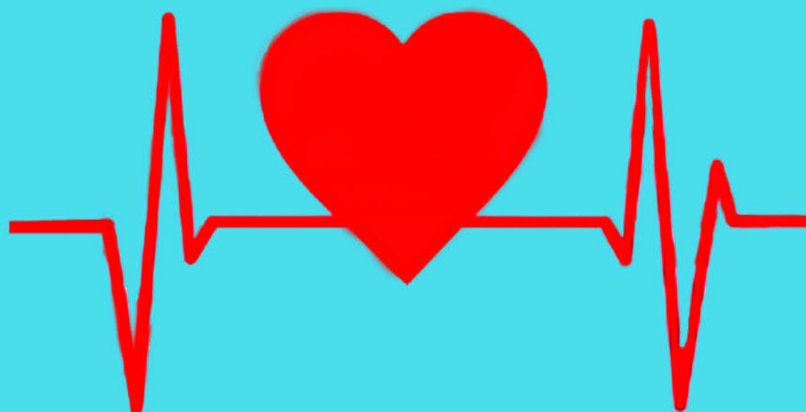
Maybe you just want to hang out with some fun folks making fun things happen in our beautiful neighborhood!

Please mark your calendar to attend the **Kala Point Social Plus Meetings for 2024** at the Kala Point Clubhouse. The meetings will be held **Tuesday, June 4, Tuesday, September 3** and **Tuesday, November 5**. All meetings are at 1 p.m.

TOGETHER, **our mission is to promote FUN** social activities & events that benefit Kala Point residents and our community. If you would like more information regarding Social Plus, please contact Char Quandt at [Charlene.quandt@gmail.com](mailto:Charlene.quandt@gmail.com) or Patti Biazzo at [pabizzo@yahoo.com](mailto:pabizzo@yahoo.com). ♦

---

# Jefferson Healthcare Hospice and the Hospice Foundation Informational Presentation



Thursday May 9, 2024 1:00 p.m. -2:30 p.m.

Kala Point Clubhouse

*Questions? Call Vickie Miller 360-385-3132*

Sponsored by Social Plus

Join the staff of JHC Hospice and Board members from the  
Hospice Foundation for Jefferson Healthcare  
for a presentation about the  
mission & purpose of the Hospice & the Foundation.

Contact JHC at: 1240 W. Sims Way Box #469 Port Townsend, WA 98368



---

## Low Tide Kala Point Beach Hike

*Diana Zinn*

On Friday, May 24, at 11 a.m., there will be a group low-tide beach hike in Kala Point. Kala Pointers Tom McFarling and Dick Zinn will lead a group from the KP beach to Fort Townsend State Park, approximately 1.8 miles, with the option of returning along the beach and hiking the trails through the park back to KP. You can arrange for a pickup at the park, or to turn around when you reach half of your own capacity.

Additionally, Paul Loubere will be along to talk about the bluff and its condition. Paul has a Ph.D. in marine geology and was a professor of geology and oceanography. He has been conducting a long-term observational study of our bluff line which involves physical and geological mapping on and offshore, and photographing the bluffs at bi-weekly intervals for the past five years. He can answer any questions you may have.

The walking surface will be wet sand with some rocks and other beach debris. It will be a good idea to wear waterproof shoes/boots.

Contact Tom McFarling ([tom.mcFarling@gmail.com](mailto:tom.mcFarling@gmail.com)) or Dick Zinn ([dickzinn@yahoo.com](mailto:dickzinn@yahoo.com)) if you need further information. No list will be taken; we will just go as an informal group. ♦

---

## May Plant Sales

After a long, cold winter and spring, gardens are coming to life. What better way to celebrate than with a plant sale?

Both sales accept various forms of payment. They also both allow carts and wagons on the sale floor, so feel free to bring them to carry your purchases.

### Master Gardeners/Food Bank Growers Sale

*Suzanne Eggleston*

After taking a year off, the Jefferson County Master Gardeners plant sale is back on! This year, the Master Gardeners are joining forces with the Food Bank Growers, the organization that grows and harvests produce for four Jefferson County food banks.

The sale will take place from **9 a.m.- 1 p.m. on Saturday, May 4, at Chimacum High School Multipurpose Room at 91 West Valley Road.**

Master Gardeners have been busy for months selecting, seeding and propagating thousands of plants, including hostas, small trees, shrubs, perennials, annuals, ground covers, tomatoes, fruits and succulents. The Food Bank Growers have done the same with a wide variety of vegetable starts. Shoppers will find everything from two-inch seedlings and houseplants to young trees, annuals and perennials — all at enticing prices.

All plants are grown and cared for by Master Gardeners and Food Bank Growers under the best conditions and include many varieties not available at local nurseries. Several vendors will be featured at the sale, including the Port Townsend Garden Center, Secret Gardens Nursery, Chimacum Woods (a rhododendron nursery), and Kul Kah Han Native Plant Garden.

Proceeds from the sale will go to support WSU Extension programming — including the popular Growing Groceries classes, Master Gardener training, and educational outreach — and to fund grants and scholarships supporting communities within Jefferson County. Recent awards were granted to gardens at Salish Coast Elementary, Swan School, Shy Acres, Irondale Soup Kitchen, and the Community Wellness Project. The Food Bank Growers will use proceeds to improve and support the gardens that grow and harvest produce for area food banks.

For more information, visit [jcmgf.org](http://jcmgf.org).



Above: Happy Master Gardeners. Right: Food Bank Grower and KP resident LeeAnn with beans.



## Tri-Area Garden Club Annual Plant Sale

*Marilyn Berry*

The Tri-Area Garden Club (TAGC) announced a location change for their Annual Plant Sale.

**This year, the sale will be held on Saturday, May 11, from 9 a.m. to 1 p.m. in the Horticulture Building at the Jefferson County Fairgrounds** located at 4907 Landes St. in Port Townsend.

We encourage you to come early for the best selections. TAGC's Annual Plant Sale has a 20+ year history of offering some of the best plant prices around the peninsula, and many items sell out quickly.

Over this past year, members have been working hard making preparations for the sale. A large variety of locally grown annuals, perennials, ground covers, ferns, and indoor plants (including some orchids) will be available. Trees that grow well in the Pacific Northwest also will be available.

New this year will be beautiful hanging baskets, whimsical "Garden Guardian" yard art, and a variety of different sized planters for patios or gardens that were made locally by retired dentist David Chuljian. Since the sale is being held Mother's Day weekend, consider purchasing a gift for Mom as well.

As in the past, TAGC will continue to provide boxes to carry purchases, a plant sitting area for those of you who want your plants held while you continue shopping, and will staff the sale floor with volunteers to answer your plant questions.

Proceeds from the sale are used to fund grants and scholarships supporting the local community. Recent awards were granted to Habitat for Humanity, Chimacum H.S. Horticulture Department, Dove House, YMCA, Salish Coast School, Swan School, Gathering Place, Sunfield School, Main Street Program, Recovery Café, and Chimacum Wellness Program.

Interested in becoming a member or want more information about the Tri-Area Garden Club? Check us out at our website [tri-areagardenclub.weebly.com](http://tri-areagardenclub.weebly.com) or our Tri-Area Garden Club Facebook page. ♦





*Photos from the 2023 Plant Sale provided by the Tri-Area Garden Club.*

---

## Imagine a Safer and More Connected Kala Point!

*Phil Brodt*

The walking and cycling path that has been proposed along a portion of Kala Point Drive will offer a much-needed boost to our community's well-being.

**Increased Safety and Accessibility:** The path will provide a dedicated space for walkers and cyclists, reducing traffic problems and creating a more peaceful environment for everyone. Conveniently placed crosswalks and all-stop intersections will ensure safe passage across Kala Point Drive.

**Active Lifestyle for All:** Whether looking for a stroll or a brisk bike ride, this path caters to all ages and fitness levels. It encourages a healthy lifestyle and promotes a greater connection to the outdoors, as well as our forested community.

**Beautiful, Landscaped Route:** The path will be tastefully landscaped, creating a visually appealing addition to our neighborhood. This could be funded entirely through private donations from members and interested groups, thus reducing the total cost of the path construction to the full membership.

**Smart Payment:** The cost of constructing the path would be separated from the annual KPOA budget. It would be structured as a loan assessment paid for by the membership over several years, keeping annual payments manageable.

**Let's Get Moving in 2025!** Construction can begin as early as next year, with your support. This path is an investment in our community's health, happiness, and overall appeal.

**Join us in creating a vibrant and connected Kala Point! ♦**

---

## Pedestrian, Driver and Cyclist Safety

*Geoff Genter, Pedestrian Safety Ad Hoc Committee member*

Neighbors, due to concerns expressed by some members here in our community, the KP Board formed an ad hoc committee to advise the Board of positive steps that could be taken to improve pedestrian safety along Kala Point Drive and the secondary roads in our community. The Pedestrian Safety Ad Hoc undertook this task.

In pursuing its role, the committee determined there were three possible approaches to improving user safety.

1) Establish a pedestrian route using existing roads and shoulders and a series of painted and signed crosswalks at points where pedestrians cross Kala Point Drive to access trails and secondary roads in the community. Along with the establishment of crosswalks, the committee advised the Board of areas along Kala Point Drive and secondary intersections and shoulders where the vegetation should be trimmed back to improve pedestrian access to the shoulder and improve line-of-sight distance for drivers, cyclists and pedestrians. The committee recommends that KPOA supply reflective vests to all members at no cost. Also, a map is to be produced similar to the state park maps, showing pedestrians safer routes that avoid traffic on Kala Point Drive. Signage would be added to inform drivers of possible pedestrian traffic ahead and crosswalk locations.

2) Hold a series of town hall meetings to inform our members of the rules of the road for drivers, pedestrians and bicyclists; the statistical data on where, when and how collisions occur between vehicles and pedestrians; and tactics that both drivers and pedestrians should adopt to minimize the risk of a collision.

These first two approaches were approved by the Board and are currently being implemented, and are financed from KP's operating budget at no further cost to the membership.

A third approach of constructing an asphalt-surfaced pathway along Kala Point Drive was discussed and determined unfeasible by the Pedestrian Safety Ad Hoc Committee due to the cost and necessary construction work needed. The Board has allowed a committee member to investigate the feasibility of the path concept and cost, and to report to the Board.

3) Create a paved walkway beside Kala Point Drive consisting of an asphalt-surfaced walkway along the shoulder at specific locations. The project would require a survey of the locations selected, grading of the shoulder, the placement of bulkheads in some cases, drainage tiles and fill, and removal of trees.

As the path would be on our utility easement, KPOA would be responsible for any repair to the surface after utility work, as well as maintenance during inclement weather removing snow, ice and debris. KPOA might need additional liability insurance. At this time, a cost for the project has not been established.

In all the Pedestrian Safety Ad Hoc Committee's discussions, it became clear that a safe environment depends on pedestrians, drivers and bicyclists educating themselves and adopting habits while walking, cycling or driving that are a benefit to all.

Let us not create an expensive and untenable solution to a problem that does not exist. Rather, let us all educate ourselves on the steps and physical changes needed to improve our safety, as pedestrians, cyclists and motorists in our remarkable community.♦

---

## Pedestrian Safety Town Hall Meeting

*Geoff Genter, Pedestrian Safety Ad Hoc Committee member*

There will be a town hall get-together on **Wednesday, May 8, at 3 p.m.** in the main room at the Clubhouse. We will be showcasing the planned improvements to increase pedestrian safety in Kala Point, and explaining the rules and habits that enhance pedestrian safety and will help reduce the possibility of a negative vehicle/pedestrian contact.♦



## Save the Date: Learn to Play Pickleball or Refresh Your Skills

**Saturday, May 11**  
11 a.m.–1 p.m., Lagoon Courts

*All ages and skill levels. We have extra paddles  
and balls. Sunday, May 12 is our rain date.*

*Please contact Michael Machette  
([mmkala@icloud.com](mailto:mmkala@icloud.com)) or Ann Kirby  
([akwoodside@aol.com](mailto:akwoodside@aol.com)) for more info.*

## Get to Know Your Neighbors:

**Marcia and Kelly Cannon**  
**Baycliff Drive**

*Article and photo by Laurie Engelbeck*

What do you do when three of your good friends say they have found the perfect house for you in the neighborhood where they live? For Marcia and Kelly Cannon, their first answer was “no.” Spoiler alert: their second answer was “yes.”

Marcia and Kelly were living happily in California near their grandchildren when three couples who had moved to Kala Point encouraged them to move. Their longtime friends had seen a house on the market that they thought would be



Marcia and Kelly Cannon

perfect for them. When Marcia and Kelly came to see it, they had to agree.

The Cannons moved in August 2023, and they describe Kala Point as “magical.” They love the walkable neighborhood, the friendly neighbors, and the quiet loveliness of the forest. They also love the abundance of music and art in Port Townsend.

They previously lived in Orinda in the East Bay Area. They were thinking about a change, but may not have left if not for their friends encouraging them to visit. After visiting the first time, they fell in love with the area and decided to move. When a house came on the market two weeks later, their friends looked at it and said it was “the house” for them.

The couple bought the house and are now working on fixing up a few things. They say they do not miss the hustle and bustle of California.

Their main activity of late has been working on the house, but they’re looking forward to getting to know the area. Marcia is exploring the variety of arts classes available here and is especially interested in finding a beginning acrylic painting class.

Kelly enjoys digital photography, especially landscape photography. He has been getting to know some of the other photographers in the area, including his neighbor. He learned photography from his father, took some classes, and practiced taking photos on trips to places like Death Valley and the California coast.

In Port Townsend, they enjoy going to restaurants and music venues. They especially enjoy small venues like the Bishop Hotel, Vintage, and Discovery Bay Brewing. They look forward to the Wooden Boat Festival and going to Vancouver and Victoria. They particularly enjoy that there are “no crowded streets here and that people are both casual and friendly!”

Kelly attended college at the University of Michigan and then opened a bookstore. He became interested in Native American art when he was a part-owner of a bookstore chain that acquired a Native American art store. He enjoyed traveling and buying art and jewelry in the Southwest. He led an effort to computerize the bookstore inventory, and later got his MBA from Northwestern University. He eventually left the book business, joined Hewlett-Packard and worked there doing software development for the next 10 years. He then worked for Kaiser Permanente, implementing a computerized medical records system. He retired in 2009.

Marcia graduated from Cal Berkeley with a degree in social sciences. She was hired to manage a temporary employment agency, and gradually came to the realization that she wanted to offer more generalized counseling. She entered an MA program at Cal State Hayward. After graduating, she earned her license as a marriage and family therapist



and practiced for 25 years. When she retired in 2010, she wrote a book called *The Gift of Anger* which teaches how to use your anger as a healing tool.

Marcia and Kelly have been together for 45 years. They have two children and seven grandchildren. Their family also includes Dylan, their Standard Poodle. ♦

## Silver Dune-Digger Bees Improve Dune Health

Article and Photos by Kris Ethington

Coastal sand dunes and spits are among the most important and vulnerable habitats for solitary bees. Roughly 85 percent of land plants depend on pollinators to reproduce. The Kala Point beach provides a vivid example of mutualism where bees pollinate plants, and plants provide bees with pollen which serves as a valuable fat and protein source.

But pollination isn't the only example of mutualism. The rich sand-loving bee fauna improves the health of our coastal dune vegetation through their activity, which in turn helps protect our coastal infrastructure.

I discovered the Pacific Dune-Digger bee (*Habropoda miserabilis*) nesting site in the dunes of Kala Point in 2022.



The species has a limited endemic range along the Pacific Coast from southern B.C., Canada, to Baja California. Verified recordings have previously only represented larger aggregations in San Francisco and coastal Oregon, where the bees have been the focus of university study.

Most of a solitary bee's life occurs underground. It spends a few weeks to a couple of months flying as an adult. Identifying where our native bees nest, and how they nest, informs our strategies for conservation in the natural dune habitat.



These silver dune-digger bees are robust in size compared to most solitary bees, silver and black in color. They are members of the Mountain Digger Bee genus *Habropoda*. The dune-diggers are polylectic, meaning they collect pollen from various unrelated kinds of flowers. As generalists that easily fly the distance of their dune habitat, they represent a bridge for pollination between scattered areas of dune vegetation and are therefore critical to the health of the ecosystem.



The female digger is larger than the male. Males have a white clypeus (face) as shown in the group photo. Last year's offspring emerge in late March to early April. Some males emerge first, aggregate with other males flying over the nesting site, and wait for emerging females. Bees typically nest where they emerged from, making their established underground habitat critically important.

The early behavior of male bees, flying low over the ground, is the best time to identify bee nesting locations. Once a female digger emerges, seven to 10 males form a mating ball with only one successfully mating with her. She will begin excavating her nesting burrow in the dune shortly after she has gathered energy from nearby flowers.

Each of her burrow openings in the dune is constructed about 30 inches deep, with multiple chambers to form a wagon wheel with one egg laid in each spoke. She uses the hairs on her strong back legs in a sweeping motion to move the sand out from the nest chambers. If you get the timing just right, you can observe her excavating burrows in early spring.

A female initially visits flowers close to the nest. She collects pollen and nectar with pollen carrying hairs (scopae) on her hind legs to provision each natal cell.



Once provisioned, she closes the cell. She will extend the length of her floral trips as the season continues and more flowers begin flowering further from the nest site. Early season blooming of Blue-eyed Marys are observed to be critical to the first couple of weeks of nest development as well as providing rooting structure at the surface of the burrows. The additional floral layering of Tall Oregon Grape, Willow, and Sea Blush provide our digger bees with essential pollen and nectar for nesting and adult energy. Each egg develops and pupates within a few weeks. New adult bees will remain in stasis underground until the following spring. The current year's adults live out their season and die in June.

Having successfully identified more than 20 native bee species at this beach, I expanded my photo observation surveys throughout Jefferson County and recently observed *Habropoda* bees at Fort Flagler and Fort Worden State Parks. Using Kala Point's dune nesting habitat as an example, I discovered where a small number of dune-diggers were nesting at Fort Worden this season. I've shared this information, photos and videos with the interpretive ranger responsible for interpretive programs at our local state parks. She and the stewardship team are excited to incorporate this information into their habitat stewardship programs and develop strategies for conserving and improving these bee habitats in the parks. ♦

---

## Pétanque à la Plage

*Article and photos by George Engelbeck*

Pétanque is back at Kala Point Beach on Tuesdays and Fridays at 3 p.m.!

Pétanque is played at all ages and skill levels. It is a low-impact, easy-to-learn game, but it is difficult to master (like bocce ball). Pétanque is also a very social game, and it is a great way to meet new people and make friends.

Pétanque is an international game that started in the South of France. It is played with metal balls (boules) thrown at a smaller target ball called the jack. The game's goal is to have your boules land closer to the jack than your opponent's.

Want to play? Join us at the beach or borrow a set of boules from the Clubhouse!

If you have any questions, contact George Engelbeck at [gengelbeck@gmail.com](mailto:gengelbeck@gmail.com) ♦



---

## Committee Close-up: Emergency Preparedness and First Aid

### Promoting Self-Reliance Within KP

*Scott Rovnpera, EPC*

Formed in 1999, the Kala Point Emergency Preparedness Committee (EPC) is celebrating its 25th anniversary this year. Made up of more than 60 members, the primary mission is to help our residents prepare for major catastrophic events and to assist those in need when first responders from Jefferson County are not able to respond. Pursuant to that mission, EPC has devised a plan to coordinate communication and needs through its Neighborhood Operations Center (NOC).

The goal of EPC is to promote self-reliance within our Kala Point community. If there is a major seismic event caused by the Cascadia Subduction Zone, a growing wildfire in Fort Townsend State Park, or even an extreme weather event, your EPC can provide interim response until first responders can arrive.

All of this preparation is based on the concept of YOYO "You're On Your Own" for a period lasting from three to 30 days. Based on what local, state and federal authorities have told us, any catastrophic event that impacts the Olympic Peninsula will most likely overcome the limited capacity of our firefighters and emergency medical technicians. If a resident in Kala Point needs medical assistance, EPC has 15 members trained in advanced first aid, CPR, and during a large event, triage.

EPC's volunteer members train regularly in the areas of first aid and radio communications. Some of our members have expanded their training into CERT (Community Emergency Response Training). In addition, EPC maintains emergency supplies in its container at Storage Lot B, first aid supplies in storage sheds by the Clubhouse and next to the Administration Building, and even supplies to care for lost pets.

Some of our educational outreach activities include participation in the Great American Shakeout allowing residents to meet our zone Block Captains; the biannual EXPO; and town-hall meetings covering pet first aid, NOC demonstration, and fire-wise practices. EPC is also the sponsor of the annual fundraiser for the "Friends of East Jefferson

Fire/Rescue” in which residents are asked to donate money to help purchase specific equipment outside of EJFR annual budget. This year we are hoping to raise \$6,000 so that EJFR can purchase three video laryngoscopes.

The EXPO that was held on April 13 was a rousing success. The more than 50 residents attending the four-hour event got an opportunity to hear from the manager of Jefferson County’s Department of Emergency Preparedness, the fire chief of East Jefferson Fire/Rescue, a spokesperson from the Medical Reserve Corp, and EPC members describing communications during an emergency, and mental health issues following a long-term catastrophe. We even held a drawing for a tactical tourniquet; residents Roxy Larsen and James Mose were the lucky winners.

Ultimately, EPC plans and prepares for emergency/disaster scenarios that will test our abilities when we are actually needed. We act as a community insurance policy by investing our talents and sharing our Good Samaritan faith to be ready when no one else is coming. If you would like to know more about EPC, check out our landing page under “Committees” on the KPOA website. ♦



Some of the EPC team at the Expo: Back row: Sue Stanton, Vicky Datz, Joe Datz, Laurie Engelbeck, Tom Clark, Charlie Hicks. Front row: Steve Donnelly, Terry Rose, Scott Rovanpera, Pam Hicks. *Photo by George Engelbeck*

## **KP First Aid Team: Trained, Dedicated and Prepared to Help**

*Terry Rose, First Aid*

In an emergency situation where first responders and outside emergency services are overwhelmed or unable to respond to situations within Kala Point, it falls to the Emergency Preparedness Committee (EPC) to establish, develop and implement an emergency plan for our neighborhood. The Board delegates this responsibility to the EPC in CC&R Article V Section 1.

A large and important part of EPC is first aid. Kala Point has had an active First Aid team for 20-plus years. The current team comprises 16 volunteers who meet on the first Friday of every month. Luckily for Kala Point, members are nearly evenly distributed throughout the community.

First Aid team members all have Advanced First Aid training and are equipped with emergency first aid backpacks, blood pressure cuffs, pulse oximeters and radios. Some members are dually trained in emergency HAM communications, CERT



(Community Emergency Response Team) and Mental First Aid. Several members have medical or dental backgrounds, but close to half are merely concerned citizens.

Monthly meetings focus on training for various first aid scenarios using lectures, PowerPoint presentations, and hands-on practice with teammates, mannequins, and live patients with realistic makeup.

The number one reason most members join the First Aid team is their desire to be able to help their family or neighbors in an emergency or disaster. Kala Point residents can be proud of the commitment and dedication of these volunteers. The team nears a 90 percent participation rate in meetings and EPC events.

It is the hope we never have to tap into this resource, but their dedication could save your life one day. ♦

*Below: Terry Rose and Libby Nordlund at the First Aid table at the Expo.*



*Right: First Aid team practices their skills.*



## East Jefferson Fire Rescue (EJFR) Annual Fundraiser

*Scott Rovanpera*

This year, EJFR would like to purchase three (3) video laryngoscopes – one for each EJFR ambulance. A video laryngoscope allows the EMT to intubate much quicker in the event of cardiac arrest, and thus, significantly increase the likelihood of successful CPR and resuscitation. The cost of one video laryngoscope is approximately \$2,000, so the goal of the fundraiser is to raise at least \$6,000.



**The fundraiser will last from April 13 through May 13.** Donations can be made by check (**made out to “Friends of EJFR”**) and can be dropped off at the KPOA Admin Office, the home of Jean Reed (353 Fairbreeze Dr.), or the home of Katharine Donnelly (76 Terrace Dr.). ♦



EJFR team at the Expo: Erin Murry, Volunteer Pattie Horvath, Sandy Short, and Chief Bret Black. *Photo by George Engelbeck.*

Chief Black recommends residents check out these links for information about emergency preparedness.

<https://www.ejfr.org/cat/information/>

<https://www.ejfr.org/wp-content/uploads/2020/04/Wildfire-Ready-booklet.pdf> ♦

---

## Help Monitor Band-tailed Pigeon Activity

*Submitted by Kris Ethington, with additional content provided by Kala Pointer staff*



On the Pacific coast, Band-tailed pigeons live between sea level and 1,000 feet of elevation, in temperate rainforests of coniferous trees such as Sitka spruce, red cedar, western hemlock, Douglas-fir, and red alder. Their foraging habitat includes fruiting shrubs such as cascara, elderberry, Pacific madrone, cherry, and huckleberry.

According to the North American Breeding Bird Survey, North American populations declined over 2 percent per year between 1966 and 2014 (amounting to a cumulative decline of 63%).

Kris Ethington says she has been in contact with a representative from Washington Department of Fish & Wildlife. The organization requests that Kala Point residents be on the lookout for the Band-tailed Pigeon at our feeders in May.

Fish & Wildlife would like to be called or emailed if we see them reliably coming to feeders this spring as they are a species of greatest concern for Washington. They intend to capture some and track their movements during May.

Report to WDFW

Anthony: 360.346.3053, [Anthony.novack@dfw.wa.gov](mailto:Anthony.novack@dfw.wa.gov) ♦



**More than 400 Kala Point Residents Read the  
*Kala Pointer* Every Month!**

Do you have a friend or neighbor who *doesn't* read Kala Point's newsletter? If so, please spread the news that



*Friends don't let friends miss out on the local news!*

there are three easy ways they can get connected and stay informed with what's happening in the community:

1. Email – To sign up call the Administration office at 360-385-0814 or email Felice at [Felice@kalapoint.org](mailto:Felice@kalapoint.org)
2. Online – Current or past issues are available under the "Kala Pointer" tab at [kalapoint.org](http://kalapoint.org)
3. Printed Copy – Available in limited quantities at the Clubhouse or Administration office ♦

---

## Committee Reports

### Architectural

*Meeting on April 18*

*Submitted by Mark Lannon, Board representative*

Lot 5010 Compliance Hearing: case closed by Board default, no quorum due to last-minute resignation of Board member; insufficient time to recruit to fill position before mandated 45-day deadline for decision.

Chair seeking replacement and likely to resign in December; no takers from existing members

APP reformatting requirement to begin with help from S. Grant and one AC member.

Three new project applications: two approved, one requiring site visit on April 23  
Two ongoing projects closed

Current ongoing projects as of April 18: 15

**Next meeting:** May 16 at 9:30 a.m. in the Clubhouse Fireplace Room

---

### Bluff Management

No meeting in April.

---

### Elections

*Meeting on April 4, 2024*

*Submitted by Chair Geoff Genther and Pat Miles, Board representative*

**Voting Methods:** Discussed current methods which members are allowed to vote. Focused on the proxy process.

**2024 In-house Ballot Counting Plan:** Established Elections Committee process to count ballots in-house. Will present to the board for approval. This will be a learning experience for manpower needed, feasibility, convenience for members and cost. This will help our membership evaluate what options to offer long term. Good news, currently over 20 KP members have volunteered to manually count ballots for our committee.

**Elections Committee and Elections Ad Hoc Committee Roles:** Update given of issues discussed at Ad Hoc Committee regarding KP elections.

**Next meeting:** May 2 at 1 p.m. in the Clubhouse Fireside Room

---

## Emergency Preparedness

*Meeting on April 4*

*Submitted by Sue Stanton, Board representative*

March 7, 2024, minutes approved as amended

The committee discussed and reviewed the EJFR (East Jefferson Fire and Rescue) fundraiser scheduled for April 13–May 13 with kickoff at the April EXPO.

The committee discussed and reviewed details of, and responsibilities for, the EXPO.

An EPC member suggested viewing a YouTube video documenting first responders' and emergency team's efforts during the Baltimore bridge collapse as educational and informative for EPC membership.

### Events

Radio check, Monday, April 8, 2024, 9 a.m. and 7 p.m.

KPOA EXPO, April 13, 2024, 12–4 p.m., Clubhouse

**Next meeting:** May 2 at 9:30 a.m. in the Clubhouse Fireplace Room

---

## Finance

*Meeting on April 2*

*Submitted by Kevin Skolrud, Board representative*

Maria Mendes gave a report for the Internal Control Committee, followed by Larry McDowell's report on account reconciliation.

The committee reviewed assessment collections and the March 2024 financial statements.

The committee reviewed American Tower's lease proposal. After a discussion, it was agreed that Keith will send a counter proposal to their offer.

The Finance Committee reviewed a request for clarification of KPOA's governing documents regarding capital improvements and bank financing.

**Next meeting:** May 7 at 9 a.m. in the Clubhouse Fireplace Room

---

## Grounds

**Next meeting:** June 27 at 9 a.m. via Zoom (May meeting canceled)

---

## Internal Control

**Next meeting:** TBD

---

## Project Study (formerly Strategic Planning)

*Meeting on April 2*

*Submitted by Sue Stanton, Board representative*

March 5, 2024, minutes were approved by motion

### **App Standardization Ad Hoc Committee**

Committee compared and discussed results of the application of the new standardization template to current APP XIV

Discussed an additional recommendation to the Board to create a new category of documents on the Kala Point Home Page named "Forms"

### **Elections Review Ad Hoc Committee**

A brief recap of the committee's first meeting was shared.

The committee has room for one more member; this member cannot be a Board member

**Next meeting:** May 7 at 3 p.m. in the Clubhouse Fireplace Room

---

## **Publications**

*Meeting on April 8*

*Submitted by Dale Moses, Board representative*

For the April 2024 issue of the *Kala Pointer*, 603 emails were sent and 68.3% were initially opened.

A reminder email was sent five days later to those who hadn't yet opened the first email and 12.7% of recipients opened it then.

A dozen or so copies were sent to Cablespeed emails and approximately 50 paper copies also were distributed by the KPOA office.

We are slowly increasing the distribution quantities!

The proposed content for the May 2024 issue was reviewed

Changes to our APP XIII to conform with the new format standards were discussed.

Ads for community events were discussed; the committee confirmed the policy for annual limits on free ads.

The committee asks that those submitting items for the *Kala Pointer* do so by the deadline (the 19th of every month) to make production less hectic.

We continue to welcome letters to the editor

**Next meeting:** May 13 at 1:30 p.m. in the Administration Building conference room

---

## **Social Plus**

*Meeting on April 2*

*Submitted by Marilyn Berry, Board representative*

Minutes from the January meeting were approved

Lansil Nithya has volunteered to be secretary.

Preliminary budget of \$2,280 for 2025 is being reviewed; submission is due in June Meetings for the remainder of 2024 will be held every two months



Events held since last meeting were discussed.

Newcomer's Party was minimally attended; hosting it on Super Bowl Sunday may have contributed to the low attendance

Patrick's Day Party was successful — very positive feedback

Upcoming Newcomer's Party in May was discussed

Increasing social media presence was discussed

Char Q. revised APP XI to the new recommended standards using the new format. Revised APP was approved by the committee and will be sent to the Board for review and approval

**Next meeting:** June 4 at 1 p.m. in the Clubhouse Fireside Room

---

## Tree

*Meeting on April 11*

*Submitted by Sue Stanton, Board representative*

Committee minutes for March 14, 2024, approved by motion.

### Discussion

New members: to keep in line with the committee's APPs, the names of two new members will be submitted to the Board for approval at the May Board meeting

Two current committee members want to be considered as alternate members when the new members are approved

General Manager K. Larson and BMAC are developing procedures specific to stormwater drains over the bluff

Drain tiles are currently being inspected for exposed/damaged tiles

Property owners are responsible for maintenance and repair of stormwater drains

General manager and G. Genther are moving forward with pedestrian safety improvements including crosswalks, signage, stop bars, and pruning along Kala Point Drive

The Tree Committee is responsible for authorizing removal of native trees, whereas the Grounds Committee is responsible for ensuring removal of debris in a timely matter

Tree Committee APP review continues and is near a final draft for review by committee members and other affected committees

Committee budget expenditures and balance were reviewed  
The meeting was adjourned for site visits

**Next meeting:** May 9 at 9 a.m. in the Administrative Building conference room ♦

---

## Looking for Things to Do in Port Townsend?

Visit [enjoypt.com](http://enjoypt.com) and [ptscene.com](http://ptscene.com) for art, events and Port Townsend activities.

Also, please check out Kala Point resident Pamela Thompson's events and local



## KPOA Shredding Event

Friday May 31, 2024

10:00 a.m. - 1:00 p.m.

Administration Office Parking Lot



LeMay Mobile Shredding will be on site for your shredding needs.

Members can drop off their paper shred items

(packed in boxes or black garbage bags)

beginning Wednesday May 29-30 between the hours of

9:00-1:00 p.m. at the KPOA maintenance building

if you are unable to attend the event.

If you have any questions please contact the Administration office at 360-385-0814.



## Through the Lens

*Images of the Beauty of  
Kala Point and Surrounding Areas*

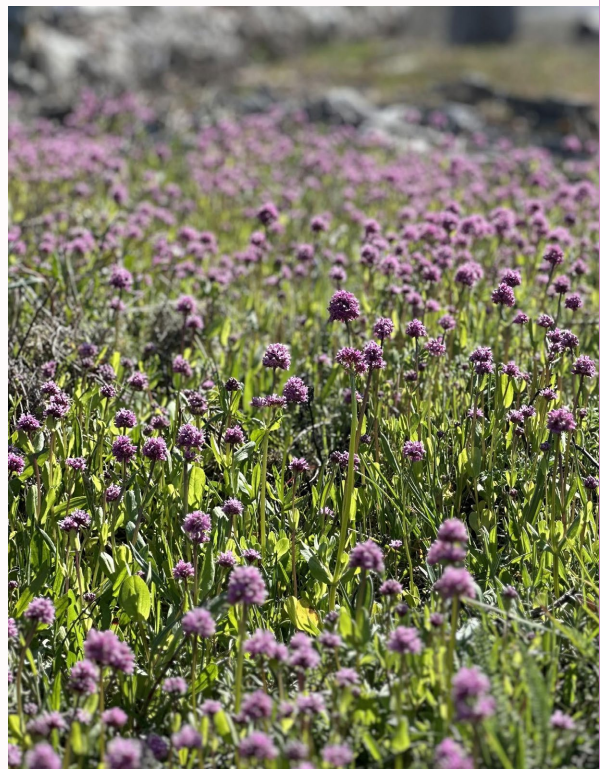


Left: BuzzyBee: *Ann Woodside*

Above: Bleeding Hearts: *Janine Cortell*

Below Left: Trillium in Fort Townsend State Park: *Laurie Engelbeck*

Below Right: Meadow Flowers: *Pamela Thompson*



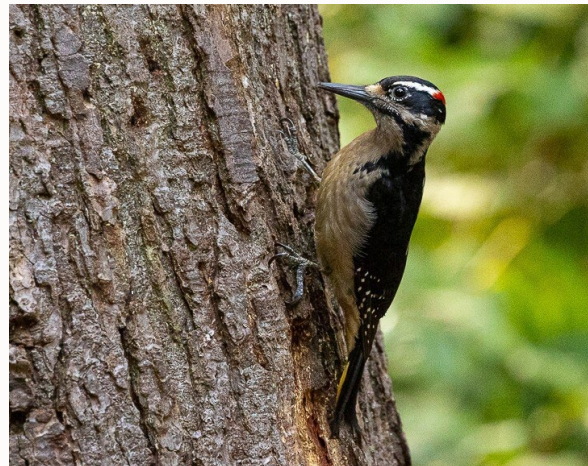




Rare Sumatran Tiger at Pt. Defiance Zoo in Tacoma: *W.R. Gentry*



"Where is everybody?" *Cheri Muller*



Hairy Woodpecker: *Kris Ethington*





Mount Rainier: *Cheri Muller*

---

## Send Us Your Photos!

Do you have images that showcase the character of Kala Point and Port Townsend? New images that highlight the natural setting, facilities and people of Kala Point will be featured in the *Kala Pointer* or on KPOA website. Please submit your full-resolution jpegs, one at a time, to [photos@kalapoint.org](mailto:photos@kalapoint.org) by the **19th of the month**. Thank you! ♦

---

## Neighborhood Ads

# Attention Grandparents

Doll clothes designed and sewn



by Sharon Ross

360.385.2365

Sizes 10"–31"

[Etsy.com](https://www.etsy.com/shop/wonderfuldollclothes) "wonderfuldollclothes"

---

**Commercial Ads**



*All proceeds from the Habitat store  
help support affordable housing in East  
Jefferson County*

## Welcome to the Habitat Store!

### Did you know?

-  We are open Monday - Saturday from 10:00 a.m. to 5:00 p.m.
-  We accept donations of household furnishings, small and large appliances, tools, and even vehicles.
-  We do complimentary pick-ups of large items that you are not able to transport yourself. Call for an appointment!
-  We can help you over the phone and via email if you can't shop in person.

**Our volunteers and staff can't wait to meet you!**  
**Call us:** (360) 385-9653 • **Email us:** [store@habitatejc.org](mailto:store@habitatejc.org)  
**Come see us:** 2001 W. Sims Way at the roundabout in Port Townsend



### **ALEX FULL SERVICE LANDSCAPING LLC**

Residential & Commercial  
 Brush Clearing - Hauling - Mowing - Pruning  
 Blackberry & Brush Removal  
 Trimming - Planting - Barking - Pressure Washing  
 Gravel Driveway Repairs - Paver Driveway Patio  
 Rockwalls - Lawn Maintenance - Tree Service  
 Fence & Deck (New or Repair) - Fence & Deck Staining  
 Call for Free Estimates      Cell 360-551-6831

# PIONEER

ELECTRICAL, LLC

Pioneer is a full service Electrical contractor  
proudly partnered with  
Kitsap Diesel & Generator.

For all your backup generator needs.

**"Quality Service, Every Project"**

## 360-477-8137

Chris Kroneberger, Owner  
ckroneberger@pioneerelectric.net



Nick *The Tech*  
Heather *The Scheduler*

## 360-768-3221

kitsapdieselgenerator.com  
kitsapdieselgenerator@gmail.com

**24 Hour Emergency Service**

Veteran Owned Businesses

Fence - Deck - New or Repair  
Chain link & Wood fences  
Deck & Fence Staining



Call for free estimates!  
360-551-6831

### Winspear Construction Services LLC

- Bathroom Upgrades
- Drywall Repair
- Painting •Fence installs
- Deck installs & Cleaning
- Pressure Washing

David Winspear · 360.797.5254  
dawinspear@gmail.com  
Contractor #WINSPCS830LB

### PT Landscaping & Design

#### Yard Maintenance

Hard working, reliable, honest & ethical.

Reasonable Rates.

Call or text Eric at: 206-355-9322

Business Licence #PORTTTL5D9



### ecoclean pressurewashing services

- driveways
- sidewalks
- patios & more

BRIAN COLEMAN

360.531.4821

**Goodbye Ugly Tree Stumps!**

## BRETT'S STUMP GRINDING

### 360-774-1226

**bretts-stumpgrinding.com**  
licensed-bonded-insured WA Lic# BrettSG943L2



**149 Google  
5-Star Reviews**



**DANIIL DUDNIK**  
 PHONE +1 (360) 728 75 18  
 EMAIL : dazik2409@gmail.com  
 License : DNDSPSC7770M  
 Licensed Contractor  
 Insured and Bonded  
 298 E ANLVERS RD  
 PORT ANGELES, WA

**Tile,  
 Decking,  
 Drywall,  
 Design,  
 Finish  
 and More**




**PACIFIC NORTHWEST CARE LLC**  
**HOME CARE**  
 Our highly qualified and trained caregivers are ready to help you & your loved ones with a variety of daily activities.  
 Call for a Personal In-Home Assessment  
 (360) 360-2350 [www.pnwcare.com](http://www.pnwcare.com)



**John L. Scott.com**  
 360-302-0556  
 derekj@johnlscott.com  
 jlsapp.com/derekj  
 derekj.johnlscott.com

**Derek Jonsson**  
 Real Estate Broker

Some offices are independently owned and operated

**John L. Scott**  
 REAL ESTATE



**Josh's Window Cleaning Service LLC**  
 Licensed & Insured

Commercial / Residential  
 Interior/Exterior Window & Screen Cleaning  
 Gutter Cleaning

360-301-6084  
[Josh22windowcleaning@gmail.com](mailto:Josh22windowcleaning@gmail.com)




**Kala Pointer Newsletter**  
 Kala Point Owners' Association  
 1760 Kala Point Drive  
 Port Townsend, WA 98368

